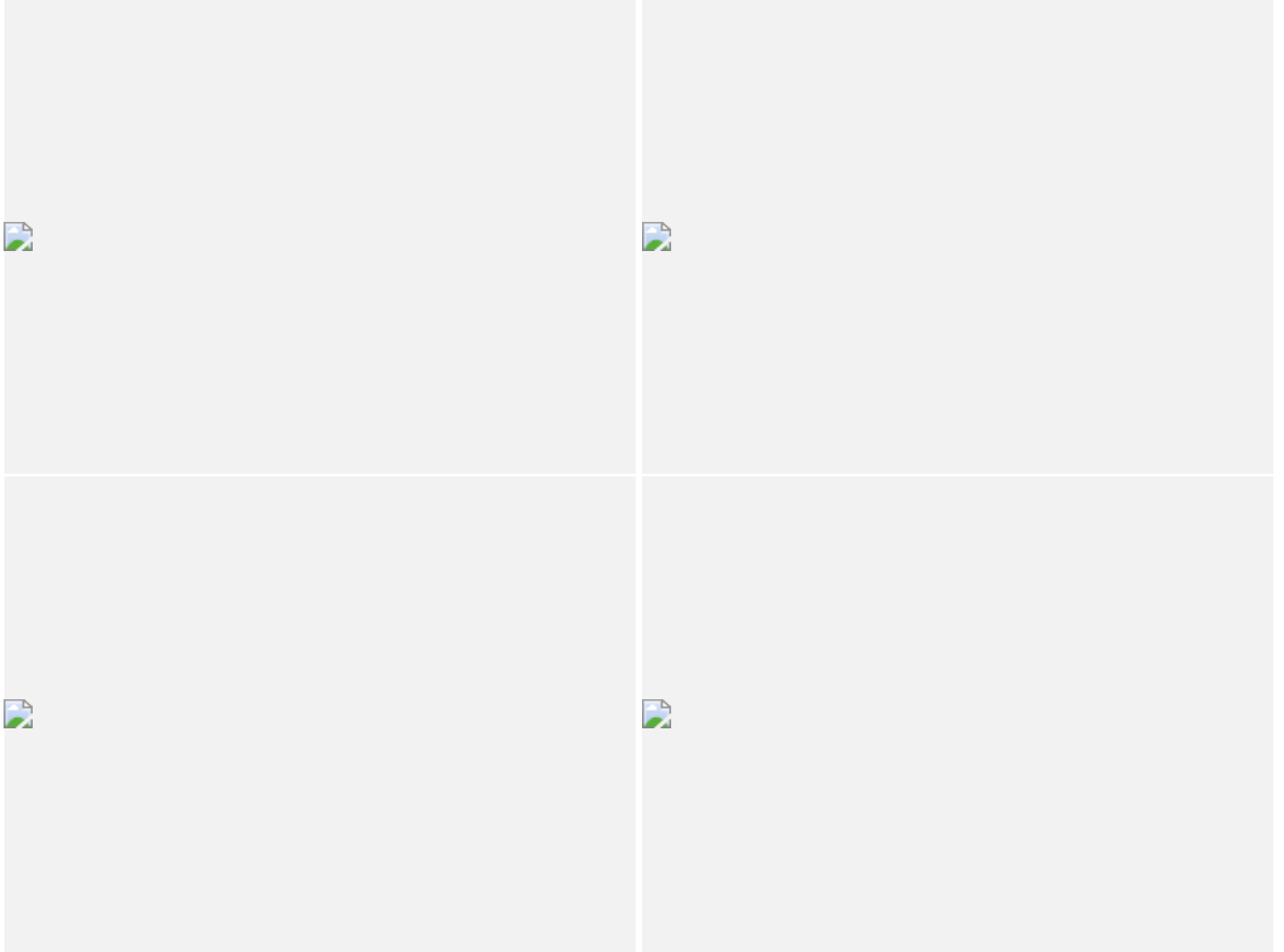




Audi A4 Sedan

1.4 TFSI Sport 110 kW S tronic

Total price: R 429,990



Audi Code

A056YFZM

www.audi.co.za/A056YFZM





Summary

Audi A4 Sedan
1.4 TFSI Sport 110 kW S tronic

Total price
R 429,990

Exterior colour
Glacier White Metallic

Interior colour

| | |
|-----------|---------------|
| Seats | Black |
| Dashboard | Black |
| Carpet | Black |
| Headliner | Titanium Grey |

Technical Data

| | |
|-------------------------|---------------------------|
| Displacement | 1395 ccm |
| Max. output kW | 110 (150)/5000-6000 |
| Max. torque | 250/1500 - 3500 Nm/min -1 |
| Top speed | 210 km/h |
| Acceleration 0-100 km/h | 8,5 s |
| Fuel grade | Super schwefelfrei ROZ 95 |



Further Information

| | |
|--------------------|-----------|
| Type of vehicle | Used car |
| First registration | 2018 |
| Mileage | 18,579 km |

Audi Freeway Plan 1 year/25000km or balance of existing

Audi Code
A056YFZM

Your configuration on www.audi.co.za
www.audi.co.za/A056YFZM

Commission number
6199

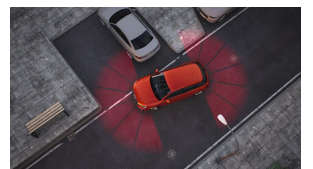
Equipment

Glacier White Metallic

High-beam control

Electric slide and tilt glass sunroof

Park assist including parking aid Plus





Standard equipment

(1/3)

Safety & technology

| | |
|-----|--|
| 0P0 | Tailpipes |
| 1KD | Disc brakes in rear |
| 1LA | Disc brakes in front |
| 2H0 | Without "drive select" |
| 1BE | Sport suspension |
| QZ7 | Electromechanical power steering |
| E0A | No special edition |
| 4UF | Deactivation switch for front passenger airbag |
| VF0 | Standard pedal cluster |
| 0G7 | tiptronic |
| 0M1 | Fuel tank (54 liters) |
| 8Z4 | Moderate hot country |
| 4X3 | 6 Airbag system |
| 9P3 | Seat belt reminder |
| 7L8 | Start/stop system |

Warranty extensions

| | |
|-----|-------------------------|
| EW0 | Without service package |
|-----|-------------------------|

Audio & communication

| | |
|-----|---|
| 9ZX | Bluetooth® Interface |
| 9S5 | Driver Information System |
| I8E | MMI radio Plus |
| 9WC | Without "Multimedia" in vehicle |
| UE4 | Electric interface for external use, with AUX-IN and USB jack |

Audio & communication

| | |
|-----|--|
| 8RM | 8 speakers (passive) |
| IT0 | Without Audi connect Navigation & Infotainment |

Assistance systems

| | |
|-----|--|
| UH2 | Hill hold assist |
| 8T6 | Cruise control system with freewheeling capability and speed limiter |
| KS0 | Without head-up display |
| U5A | Instrument cluster, km/h speedometer |
| KA0 | Without camera systems/accident sensors |
| 7Y0 | Without lane change assist |

Headlights

| | |
|-----|--|
| 8K1 | Separate daytime running light |
| 8IH | Audi xenon plus headlights |
| 8Q2 | Automatic-static headlight range control |
| 8SA | Rear combination lamps |
| 8X0 | Without headlamp washer system |
| 8N6 | Light and rain sensor |

Tyres

| | |
|-----|--|
| 7K9 | Tire pressure monitoring system |
| 1G5 | Space-saving spare wheel |
| C7R | Cast alloy wheels, 5-parallel-spoke style, 7.5J x 17 |
| H0B | Tires 225/50 R17 94Y |

Standard equipment

(2/3)

Tyres

| | |
|-----|------------------------|
| 1PD | Anti-theft wheel bolts |
| 1S1 | Tool kit and jack |

Exterior design

| | |
|-----|---|
| 6FA | Door mirror housing - Body coloured |
| 2K6 | Reinforced bumpers |
| 0NA | Without nameplate set (without model designation) |
| 2Z1 | Model designation/nameplate |
| 4ZB | Aluminium window trims |

Roof systems & glazing

| | |
|-----|---|
| 5XK | Sun visors on driver's and passenger side |
| 4KC | Heat-insulating glass |
| 3Y0 | Without roll-up sunshade |
| 4GF | Windshield with acoustic glass |

Seats

| | |
|-----|--|
| Q1D | Sports seats in front |
| 4D0 | Without seat ventilation/massage seat |
| 3Q1 | Rear head restraints |
| 5ZF | Front head restraints |
| 3G4 | Child seat anchor, front |
| 7P0 | Without lumbar support in seat backrests |
| 6E3 | Comfort center armrest in front |
| 3L3 | Front seats, manually adjustable |

Seats

| | |
|-----|---|
| 4A0 | Without seat heater |
| 3B3 | ISOFIX child seat anchors and top tether for outer rear seats |
| 3ND | Rear seat bench/backrest, unfolding |

Interior design

| | |
|-----|------------------------------------|
| 0UA | Without special color trim |
| 7HA | Without leather |
| 6NJ | Headliner in fabric |
| 5TT | Inlays - Aluminium Ellipse, silver |
| 7M1 | Scuff plates with aluminum insert |
| 0TD | Floor mats in front and rear |

Seats & seat upholstery

| | |
|-----|---------------------------------|
| N1F | Leather/leatherette combination |
|-----|---------------------------------|

Steering wheels & control elements

| | |
|-----|--|
| 1XC | Leather-wrapped multi-function steering wheel, 3-spoke |
|-----|--|

Light

| | |
|-----|----------------------------|
| QQ1 | LED Interior Lighting Pack |
|-----|----------------------------|

Comfort

| | |
|-----|------------------------------------|
| 6XC | Exterior mirrors, power-adjustable |
| 5SJ | Left exterior mirror, convex |



Standard equipment

(3/3)

Comfort

| | |
|-----|---|
| 6TS | Right exterior mirror, aspherical |
| 4L6 | Auto-dimming interior rearview mirror, frameless |
| 9AK | Automatic air conditioning system |
| 7AL | Anti-theft alarm system |
| 5NC | Standard tailgate vent lock |
| 4H5 | Power-operated child safety lock |
| 4E2 | Luggage compartment lid, automatically opening |
| 4I6 | "Keyless Go" central locking system (with SAFELOCK) |
| 1D0 | Without trailer hitch |
| 5A8 | Luggage compartment trim (design 2) |
| 6SS | Luggage compartment floor mat |
| 9JA | Non-smoker's package |



Technical Data

Engine

| | |
|-------------------------|---------------------------|
| Displacement | 1395 ccm |
| Displacement (in liter) | 1.4 l |
| Power Level | 30 |
| Max. output kW | 110 (150)/5000-6000 |
| Max. output ps/hp | 150 PS |
| Max. torque | 250/1500 - 3500 Nm/min -1 |

Weights

| | |
|-----------------------------------|------------|
| Unladen weight | 1450 kg kg |
| Gross weight limit | 1945 kg |
| Roof load limit/nose weight limit | 90/80 kg |

Trailer weight limit

| | |
|-----------------|---------|
| unbraked | 720 kg |
| at 12% gradient | 1500 kg |
| at 8% gradient | 1700 kg |

Volumes

| | |
|---------------------|-------|
| Luggage compartment | 480 l |
| Fuel tank (approx.) | 54 l |

Performance data

| | |
|-------------------------|----------|
| Top speed | 210 km/h |
| Acceleration 0-100 km/h | 8,5 s |

Consumption

| | |
|-----------------------------|---------------------------|
| Fuel grade | Super schwefelfrei ROZ 95 |
| Fuel consumption - combined | 5.3 l |
| CO ₂ emissions | 122 g/km |
| Emission class | EU6 |

Efficiency

| | |
|------------------|---|
| Efficiency class | B |
|------------------|---|



Verbrauch & Emissionen*

Kraftstoffverbrauch (NEFZ)

| | PETROL |
|----------------|--------|
| Innerstädtisch | 6.8 l |
| Außerstädtisch | 4.4 l |
| Kombiniert | 5.3 l |

CO₂-Emission
kombiniert (NEFZ) PETROL 122 g/km



Contact Details

Dealership details

Audi Centre Pinetown

111 Old Main Road
3600 Pinetown

Phone: +27 (31) 737 4000

Fax: +27 (31) 717 7945

www: <http://www.audi-pinetown.co.za>

email: kenp@alpinemotors.co.za



Further information (disclaimer)

* Recommended Retail Price incl VAT which is not binding. All pricing supplied on this site, together with rates quoted, are guidelines only and are subject to confirmation at the time of finalising any transactions. All information regarding the products, fees and/or costs which are included are subject to change at any time prior to a final pre-agreement quote being handed to the user. E&OE.