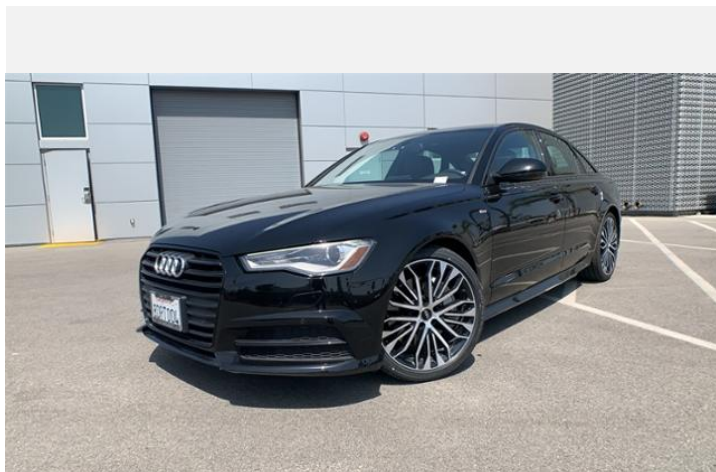




2018 Audi A6 Sedan

2.0 TFSI Sport HP S tronic

Price as built : \$26,984



Audi Code

A0UCZG8U

www.audiusa.com/A0UCZG8U



Summary

Audi 2018 Audi A6 Sedan
2.0 TFSI Sport HP S tronic

Price as built
\$26,984

Exterior colour

Interior colour

Technical Specifications

Engine type	Four-cylinder
Displacement/Bore and stroke	1984/82.5 x 92.8 cc/mm
Max. output	185 kW
Torque	273 @ 1,600 – 4,500 lb-ft@rpm
Top track speed	130 mph mph
Acceleration (0 - 60 mph)	5.8 seconds seconds
Recommended fuel	Premium



Further Information

Type of vehicle	Used car
Mileage	32,270 miles

Warranty No

Audi Code
A0UCZG8U

Your configuration on www.audiusa.com
www.audiusa.com/A0UCZG8U

Commission number
15044cca0a0e0ae7148b



Dealer remarks

FUEL EFFICIENT 34 MPG Hwy/25 MPG City! CARFAX 1-Owner, ONLY 32,270 Miles! Navigation, Moonroof, Heated Leather Seats, Back-Up Camera, Satellite Radio, iPod/MP3 Input, 20" BLACK OPTIC WHEEL PACKAGE, AUDI TRAVELSPACE BASE CARRIER BARS

KEY FEATURES INCLUDE

Leather Seats, Navigation, Sunroof, Rear Air, Heated Driver Seat, Back-Up Camera, Turbocharged, Satellite Radio, iPod/MP3 Input, Bluetooth, CD Player, Keyless Start, Dual Zone A/C, WiFi Hotspot, Smart Device Integration. Audi Sport with Brilliant Black exterior and Black interior features a 4 Cylinder Engine with 252 HP at 5000 RPM*.

OPTION PACKAGES

20" BLACK OPTIC WHEEL PACKAGE Wheels: 20" Black 5-Arm Star Design, Tires: P255/35R20 Summer, AUDI TRAVELSPACE BASE CARRIER BARS base bars and storage bag. MP3 Player, Keyless Entry, Remote Trunk Release, Steering Wheel Controls, Child Safety Locks.

EXPERTS RAVE

KBB.com explains "It's safe to say that all A6 models are swift. More impressive than outright acceleration is the A6's balance of dynamic handling and compliant manners. This is a car that feels at ease in almost any situation."

OUR OFFERINGS

We believe that we deliver customers happiness because we put an emphasis on providing exceptional customer service. We're here to listen to your automobile needs and answer your questions to help you make a smart decision about buying or leasing a new or pre-owned vehicle-the professionals here will never push you into a car purchase or lease. We call it the DCH Way. and we think you'll like what we have to offer.

Horsepower calculations based on trim engine configuration. Fuel economy calculations based on original manufacturer data for trim engine configuration. Please confirm the accuracy of the included equipment by calling us prior to purchase.



Technical Specifications

(1/2)

Engineering | Performance

Engine type	Four-cylinder
Power Level	40
Max. output	185 kW
Displacement	2.0 l
Horsepower	252 @ 5,000 – 6,000 @ rpm
Max. output KW	185 kW
Torque	273 @ 1,600 – 4,500 lb-ft@rpm
Valvetrain	16 valve DOHC
Acceleration (0 - 60 mph)	5.8 seconds seconds
Engine block	Cast-iron
Induction/fuel injection	Turbocharged/TFSI®
Cylinder head	Aluminum-alloy
Displacement/Bore and stroke	1984/82.5 x 92.8 cc/mm
Top track speed	130 mph mph

Electrical system

Alternator	14 Volt - 120-180A
Battery	12 Volt - 80Ah

Transmission | Drivetrain

Gear ratios: 8th	0.667: 1
Gear ratios: 6th	1.000: 1
Gear ratios: 7th	0.839: 1
Gear ratios: Reverse	3.317: 1
Drivetrain type	Automatic
Gear ratios: Final Drive	3.076: 1
Gear ratios: 4th	1.667: 1
Transmission	Eight-speed Tiptronic® automatic transmission and front-wheel drive
Gear ratios: 5th	1.285: 1
Layout	Front-wheel drive
Gear ratios: 2nd	3.143: 1
Gear ratios: 3rd	2.106: 1
Transmission	S tronic
Gear ratios: 1st	4.714: 1

Steering

Steering type	Electromechanical speed-sensitive power steering
Turning diameter, curb-to-curb	39.0 ft
Steering ratio	16.1: 1



Technical Specifications

(2/2)

Suspension

Front axle	Five-link front suspension
Rear axle	Trapezoidal-link rear suspension
Optional	Sport suspension calibration

Brakes

Front brakes	13.6 (ventilated disc) in
Rear brakes	13.0 (ventilated disc) in
Parking brake	Electromechanical

Body

Material	Aluminum exterior body panels and a steel chassis
----------	---

Warranty | Maintenance

Warranty	4-year/50,000 mile Audi New Vehicle Limited Warranty
Maintenance	12-month/10,000 mile (whichever occurs first) NO CHARGE first scheduled maintenance

Exterior Measurements

Height	57.8 in
Overall width without mirrors	73.8 in
Length	194.2 in
Wheelbase	114.6 in
Drag coefficient	0.28 Cw
Overall width with mirrors	82.1 in
Track rear	63.7 in
Track front	64.1 in
Curb weight	3,957 lb

Interior measurements

Seating capacity	5
Shoulder room, rear	56.3 in
Head room with front sunroof	37.2 in
Leg room, rear	37.4 in
Shoulder room, front	57.5 in
Head room with rear sunroof	37.8 in
Leg room, front	41.3 in
Cargo volume, rear seatbacks up/folded	14.1/N/A cu ft, cu ft



Consumption- and emission

Consumption by NEDC

urban	22.0 mpg
extra-urban	31.0 mpg
combined	26.0 mpg



Contact

Dealer
Audi Oxnard

1600 Ventura Blvd
93036 Oxnard

Phone: +18052883800
FAX: 8052883825

www: <https://www.dchaudioxnard.com>



Further information (Disclaimer)

Please note that although Audi Canada tries its best to avoid any pricing, fees, informational copy or image errors, there may be times where human error or omissions are encountered while developing and/or modifying the Audi Canada website. Audi Canada shall not be deemed liable or held responsible for any errors, omissions or any related issues to the information provided and contained on Audi.ca or external site linked to Audi.ca. The laws and courts of Ontario shall govern any issues related to Audi.ca, or external site linked to Audi.ca. All of the information contained in this site is for information purposes only and in no way constitutes an advertisement or an offer to buy or sell Audi vehicles. Manufacturer's Suggested Retail Price is for the Audi model selected (current model year available and in-market). Freight and PDI, license, insurance, registration, any dealer or other charges, options and taxes are not included. Actual prices are set by the dealer. This site shall not be used or relied upon by you as a substitute for information that is available to you from an authorized Audi dealer