



2021 Audi Q5

Premium 45 TFSI® quattro® S tronic®

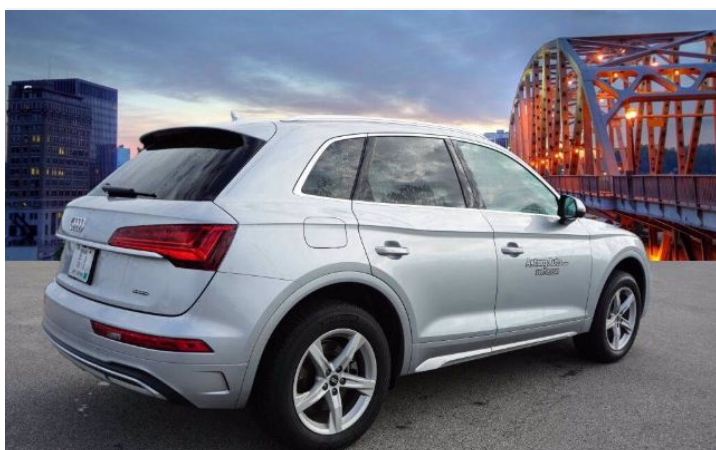
Price as built : \$38,362



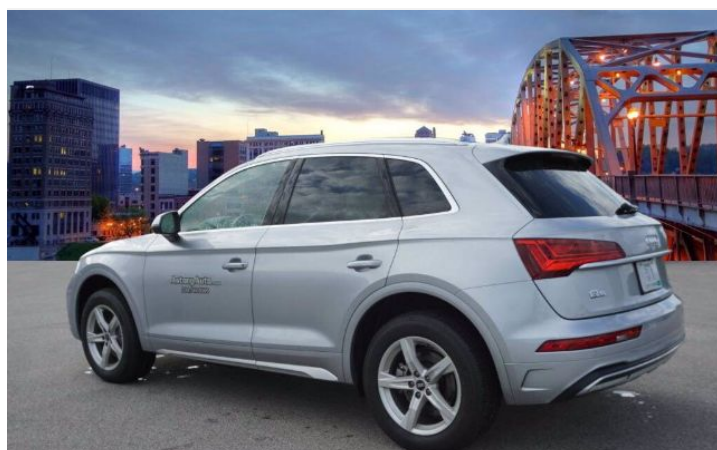
304-746-0500



304-746-0500



304-746-0500



304-746-0500

Audi Code

A68EU82P

www.audiusa.com/A68EU82P



Summary

Audi 2021 Audi Q5
Premium 45 TFSI® quattro® S tronic®

Price as built
\$38,362

Exterior colour

Florett Silver metallic

Interior colour

Seats	Black with Rock Gray stitching
Dashboard	Black
Carpet	Black
Headliner	Gray

Technical Specifications

Engine type	2.0-liter four-cylinder
Displacement/Bore and stroke	1,984/82.5 x 92.8 cc/mm
Max. output	261 HP
Torque	273 lb-ft@rpm
Top track speed	130 mph ¹
Acceleration (0 - 60 mph)	5.7 seconds
Recommended fuel	Premium



Further Information

Type of vehicle	Used car
Mileage	31,769 miles

Warranty
No

Audi Code
A68EU82P

Your configuration on www.audiusa.com
www.audiusa.com/A68EU82P

Commission number
b1ae05530a0e0971013f

Equipment

Florett Silver metallic

Audi advanced key-keyless start, stop and entry

Power-adjustable, auto-dimming, power-folding, heated exterior side mirrors with memory

Convenience package

Power panoramic sunroof

SiriusXM® with 90-day All Access trial subscription





Standard features

(1/2)

Safety and Security

4UB	Driver and front passenger airbags
UH1	Electromechanical parking brake
8T2	Cruise control system
VC2	Garage door opener (Homelink®)
4H5	Electronic rear child door locks
QZ7	Speed-sensitive electromechanical power steering system
7K6	Tire-pressure monitoring system
4X3	Advanced Airbag Protection System
3B7	Lower Anchors and Tethers for Children (LATCH) in rear seats

Exterior

1D8	Trailer hitch provision
1S1	Tool kit and floor jack
1BA	Standard suspension
3S1	Aluminum roof rails
5J1	Tailgate roof spoiler
8IT	Full LED headlights with DRL signature
HX2	235/60 R18 all-season tires
8VM	LED taillights with dynamic turn signal
VJ1	Full paint finish
4KC	Heat-insulating side and rear windows
4ZB	Aluminum trim around exterior windows
41V	18" 5-arm-star design wheels with all-season tires

Interior

QE1	Storage package
4M3	Four beverage holders
7M1	Aluminum front door sill inlays
6NJ	Light cloth headliner
9AQ	Three-zone automatic climate control system
4L7	Auto-dimming interior rear view mirror with digital compass and Integrated Toll Module®
QQ1	LED interior lighting package
6E3	Front center armrest
7F9	Leather-wrapped gear selector
4E7	Power tailgate
5XF	Driver and front-passenger extendable sun visors with illuminated vanity mirrors
3NS	Sliding, split folding 40/20/40 rear seatbacks with adjustable recline
N1P	Leather seat covers
4A3	Heated front seats
5MP	Brown Walnut Wood inlays

Infotainment and Driver Assistance

6K9	Audi pre sense® city
2H1	Audi drive select
IU1	Audi smartphone interface
IW3	Audi connect® CARE assistance and security services (limited time subscription)
7X2	Parking system plus
7W3	Audi pre sense® basic and rear
KA2	Rear view camera



Standard features

(2/2)

Infotainment and Driver Assistance

8G1	High beam assist
9VD	Audi sound system
9S7	7.0" color driver information system
7Y1	Audi side assist
6I3	Audi active lane assist
9ZX	Preparation for mobile phone (Bluetooth®) with streaming audio



Dealer remarks

You won't want to miss this excellent value!

You'll appreciate its safety and convenience features! The engine breathes better thanks to a turbocharger, improving both performance and economy. All of the premium features expected of an Audi are offered, including: leather upholstery, adjustable headrests in all seating positions, and 1-touch window functionality. Under the hood you'll find a 4 cylinder engine with more than 200 horsepower, providing a smooth and predictable driving experience. Well tuned suspension and stability control deliver a spirited, yet composed, ride and drive

Our experienced sales staff is eager to share its knowledge and enthusiasm with you. We'd be happy to answer any questions that you may have. We are here to help you.



Technical Specifications

(1/2)

Engineering | Performance

Engine type	2.0-liter four-cylinder
Power Level	45
Max. output	261 HP
Displacement	2.0 l
Towing capacity	4,400 lb
Valvetrain	16-valve DOHC with Audi valvelift system and variable valve timing
Torque	273 lb-ft@rpm
Acceleration (0 - 60 mph)	5.7 seconds
Engine block	Cast-iron
Induction/fuel injection	Turbocharged/TFSI®
Cylinder head	Aluminum-alloy
Displacement/Bore and stroke	1,984/82.5 x 92.8 cc/mm
Top track speed ¹	130 mph

Exterior Measurements

Height	65.5 in
Overall width without mirrors	74.5 in
Length	184.3 in
Wheelbase	111.0 in
Overall width with mirrors	84.2 in
Track rear	63.3 in
Track front	63.6 in
Curb weight	4,079 lb

Interior measurements

Seating capacity	5
Shoulder room, rear	56.5 in
Shoulder room, front	57.7 in
Leg room, rear	38.0 in
Head room with front sunroof	38.1 in
Head room with rear sunroof	37.7 in
Head room, rear	39.3 in
Leg room, front	40.9 in
Head room, front	39.6 in
Cargo volume, rear seatbacks up/folded	25.8/54.0 (25.6/53.5 with sunroof) cu ft, cu ft

Steering

Steering type	Electromechanical progressive steering system
Turning diameter, curb-to-curb	38.7 ft
Steering ratio	15.9:1

Volumes

Fuel ²	18.5 gal
-------------------	----------

Brakes

Front brakes	13.3 (ventilated disc) in
Rear brakes	13.0 (ventilated disc) in



Technical Specifications

(2/2)

Warranty | Maintenance

Warranty	4-year/50,000-mile Audi New Vehicle Limited Warranty
----------	--

Suspension

Front axle	Five-link suspension - Audi comfort suspension
Rear axle	Five-link suspension - Audi comfort suspension

Electrical system

Hybrid engine	12-volt Mild Hybrid Electric Vehicle (MHEV) technology
---------------	--

Transmission | Drivetrain

Drivetrain type	quattro® all-wheel drive with ultra® technology
Transmission	Seven-speed S tronic® dual-clutch automatic transmission

Body

Material	Lightweight technology—multi-material construction (steel and aluminum)
----------	---



Contact

Dealer
Audi Charleston

4 Dudley Farms Ln
25309 Charleston
WV

Phone: 3047460500
FAX: 1111111111

www: <https://www.audicharlestonwv.com>



Further information (Disclaimer)

¹ Top track speed electronically limited in the U.S. Always obey speed and traffic laws.

² Gasoline cars: Never drive until the tank is completely empty. The irregular supply of fuel that results from that can cause engine misfires. Uncombusted fuel will then enter the exhaust system. This can cause overheating and damage to the catalytic converter. Electric cars: Never drive the battery down to a completely empty state of charge.

Please note that although Audi Canada tries its best to avoid any pricing, fees, informational copy or image errors, there may be times where human error or omissions are encountered while developing and/or modifying the Audi Canada website. Audi Canada shall not be deemed liable or held responsible for any errors, omissions or any related issues to the information provided and contained on Audi.ca or external site linked to Audi.ca. The laws and courts of Ontario shall govern any issues related to Audi.ca, or external site linked to Audi.ca. All of the information contained in this site is for information purposes only and in no way constitutes an advertisement or an offer to buy or sell Audi vehicles. Manufacturer's Suggested Retail Price is for the Audi model selected (current model year available and in-market). Freight and PDI, license, insurance, registration, any dealer or other charges, options and taxes are not included. Actual prices are set by the dealer. This site shall not be used or relied upon by you as a substitute for information that is available to you from an authorized Audi dealer