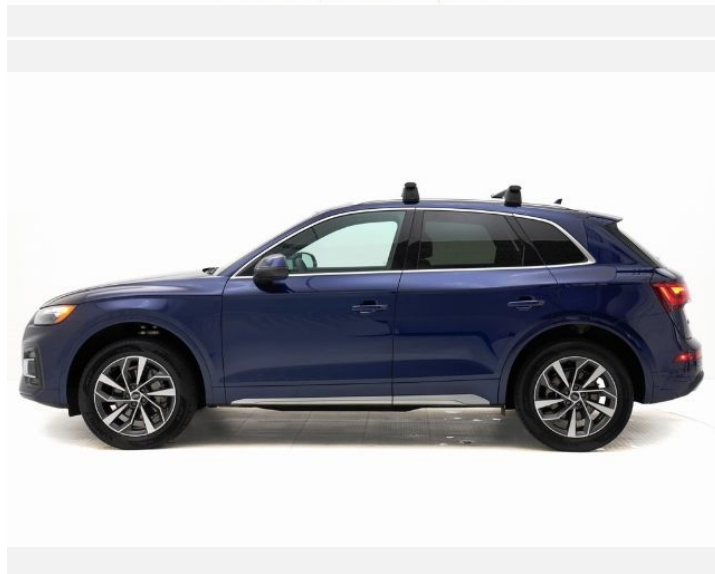




2021 Audi Q5

Premium 45 TFSI® quattro® S tronic®

Price as built : \$40,492



Audi Code

A8FP2X0N

www.audiusa.com/A8FP2X0N





Summary

Audi 2021 Audi Q5
Premium 45 TFSI® quattro® S tronic®

Price as built
\$40,492

Exterior colour

Navarra Blue metallic

Interior colour

Seats	Okapi Brown with Granite Gray stitching
Dashboard	Black
Carpet	Black
Headliner	Black

Technical Specifications

Engine	2.0-liter four-cylinder
Displacement	1,984/82.5 x 92.8 cc/mm
Max. output	261 HP
Max. torque	273 lb-ft@rpm
Top speed	130 mph ¹
Acceleration	5.7 seconds
Fuel type	Premium



Further Information

Type of vehicle	Used car
Mileage	11,547 miles

Warranty
No

Audi Code
A8FP2X0N

Your configuration on www.audiusa.com
www.audiusa.com/A8FP2X0N

Commission number
3be092ad0a0e0a9a444e

Equipment

Navarra Blue metallic

Audi advanced key-keyless start, stop and entry

Power-adjustable, auto-dimming, power-folding, heated exterior side mirrors with memory



19" 5-double-arm design wheels, bi-color finish, with all-season tires



Convenience package



Power panoramic sunroof



Black cloth headliner



SiriusXM® with 90-day All Access trial subscription





Standard features

(1/2)

Interior

4L7	Auto-dimming interior rear view mirror with digital compass and Integrated Toll Module®
QQ1	LED interior lighting package
6E3	Front center armrest
7F9	Leather-wrapped gear selector
4E7	Power tailgate
5XF	Driver and front-passenger extendable sun visors with illuminated vanity mirrors
3NS	Sliding, split folding 40/20/40 rear seatbacks with adjustable recline
N1P	Leather seat covers
4A3	Heated front seats
5MP	Brown Walnut Wood inlays
QE1	Storage package
4M3	Four beverage holders
7M1	Aluminum front door sill inlays
9AQ	Three-zone automatic climate control system

Infotainment and Driver Assistance

6K9	Audi pre sense® city
2H1	Audi drive select
IU1	Audi smartphone interface
IW3	Audi connect® CARE assistance and security services (limited time subscription)
7X2	Parking system plus
7W3	Audi pre sense® basic and rear
KA2	Rear view camera
8G1	High beam assist

Infotainment and Driver Assistance

9VD	Audi sound system
9S7	7.0" color driver information system
7Y1	Audi side assist
6I3	Audi active lane assist
9ZX	Preparation for mobile phone (Bluetooth®) with streaming audio

Safety and Security

4UB	Driver and front passenger airbags
UH1	Electromechanical parking brake
8T2	Cruise control system
VC2	Garage door opener (Homelink®)
4H5	Electronic rear child door locks
QZ7	Speed-sensitive electromechanical power steering system
7K6	Tire-pressure monitoring system
4X3	Advanced Airbag Protection System
3B7	Lower Anchors and Tethers for Children (LATCH) in rear seats

Exterior

1D8	Trailer hitch provision
1S1	Tool kit and floor jack
1BA	Standard suspension
3S1	Aluminum roof rails
5J1	Tailgate roof spoiler
8IT	Full LED headlights with DRL signature



Standard features

(2/2)

Exterior

HN2	235/55 R19 all-season tires
8VM	LED taillights with dynamic turn signal
VJ1	Full paint finish
4KC	Heat-insulating side and rear windows
4ZB	Aluminum trim around exterior windows



Dealer remarks

Audi Beaverton has been serving the Portland area since 1980. Our family of enthusiasts welcomes you to the oldest, most-awarded Audi dealership in Oregon offering unmatched amenities and service.

Certified.

CARFAX One-Owner.

Clean CARFAX.

Audi Beaverton offers this 2021 Navarra Blue Metallic Audi Q5 45 Premium AWD. It is well equipped and includes these features and benefits: Convenience Package (Audi Advanced Key, Auto-Dimming Power Folding Exterior Mirrors, Driver Seat Memory, Heated Steering Wheel, and SiriusXM All Access Service), Audi Certified pre-owned Certified, Okapi Brown w/Leather Seating Surfaces, ABS brakes, Alloy wheels, Compass, Electronic Stability Control, Front dual zone A/C, Heated door mirrors, Heated front seats, Illuminated entry, Low tire pressure warning, Power Liftgate, Remote keyless entry, Traction control, 10 Speakers, 4-Wheel Disc Brakes, 5.302 Axle Ratio, Air Conditioning, AM/FM radio, Auto High-beam Headlights, Auto-dimming Rear-View mirror, Automatic temperature control, Brake assist, Bumpers: body-color, Delay-off headlights, Driver door bin, Driver vanity mirror, Dual front impact airbags, Dual front side impact airbags, Emergency communication system: Audi connect CARE, Exterior Parking Camera Rear, Four wheel independent suspension, Front anti-roll bar, Front Bucket Seats, Front Center Armrest, Front fog lights, Front reading lights, Garage door transmitter: HomeLink, Genuine wood console insert, Genuine wood dashboard insert, Genuine wood door panel insert, Heated 8-Way Power Front Bucket Seats, Leather Seating Surfaces, Leather Shift Knob, Occupant sensing airbag, Outside temperature display, Overhead airbag, Overhead console, Panic alarm, Passenger door bin, Passenger vanity mirror, Power door mirrors, Power driver seat, Power passenger seat, Power steering, Power windows, Radio data system, Radio: Audi Sound System, Rain sensing wipers, Rear air conditioning, Rear anti-roll bar, Rear fog lights, Rear reading lights, Rear seat center armrest, Rear window defroster, Rear window wiper, Roof rack, Security system, Speed control, Speed-sensing steering, Speed-Sensitive Wipers, Split folding rear seat, Spoiler, Steering wheel mounted audio controls, Tachometer, Telescoping steering wheel, Tilt steering wheel, Trip computer, Turn signal indicator mirrors, Variably intermittent wipers, and Wheels: 19" 5-Double-Arm Design Bi-Color Finish. Okapi Brown w/Leather Seating Surfaces, ABS brakes, Alloy wheels, Audi Advanced Key, Auto-Dimming Power Folding Exterior Mirrors, Compass, Convenience Package, Driver Seat Memory, Electronic Stability Control, Front dual zone A/C, Heated door mirrors, Heated front seats, Heated Steering Wheel, Illuminated entry, Low tire pressure warning, Power Liftgate, Remote keyless entry, SiriusXM All Access Service, Traction control.

Audi Certified pre-owned Details:

* Roadside Assistance for two years with unlimited miles. Certified pre-owned Limited Warranty: For all CPO sales on or after 7/1/22, if New Vehicle Limited Warranty (NVLW) coverage remains at time of CPO purchase, CPO Limited Warranty Coverage commences upon expiration of NVLW and continues for a period of two years or 50,000 miles, whichever occurs first. If NVLW coverage has expired at time of CPO purchase, CPO Limited Warranty coverage commences at time of purchase and continues for two years or 50,000 miles, whi...



Technical Specifications

(1/2)

Engine

Engine	2.0-liter four-cylinder
Power Level	45
Max. output	261 HP
Displacement	2.0 l
Towing capacity	4,400 lb
Valvetrain	16-valve DOHC with Audi valvelift system and variable valve timing
Max. torque	273 lb-ft@rpm
Acceleration	5.7 seconds
Engine block	Cast-iron
Induction/fuel injection	Turbocharged/TFSI®
Cylinder head	Aluminum-alloy
Displacement	1,984/82.5 x 92.8 cc/mm
Top speed ¹	130 mph

Exterior Measurements

Height	65.5 in
Overall width without mirrors	74.5 in
Length	184.3 in
Wheelbase	111.0 in
Overall width with mirrors	84.2 in
Track rear	63.3 in
Track front	63.6 in
Curb weight	4,079 lb

Interior measurements

Seating capacity	5
Shoulder room, rear	56.5 in
Shoulder room, front	57.7 in
Leg room, rear	38.0 in
Head room with front sunroof	38.1 in
Head room with rear sunroof	37.7 in
Head room, rear	39.3 in
Leg room, front	40.9 in
Head room, front	39.6 in
Luggage compartment capacity	25.8/54.0 (25.6/53.5 with sunroof) cu ft, cu ft

Steering

Steering type	Electromechanical progressive steering system
Turning diameter, curb-to-curb	38.7 ft
Steering ratio	15.9:1

Brake system

Front brakes	13.3 (ventilated disc) in
Rear brakes	13.0 (ventilated disc) in

Warranty | Maintenance

Warranty	4-year/50,000-mile Audi New Vehicle Limited Warranty
----------	--



Technical Specifications

(2/2)

Suspension

Front axle	Five-link suspension - Audi comfort suspension
Rear axle	Five-link suspension - Audi comfort suspension

Electrical system

Hybrid engine	12-volt Mild Hybrid Electric Vehicle (MHEV) technology
---------------	--

Driveline

Drivetrain type	quattro® all-wheel drive with ultra® technology
Transmission	Seven-speed S tronic® dual-clutch automatic transmission

Body

Material	Lightweight technology—multi-material construction (steel and aluminum)
----------	---



Contact

Dealer

Audi Beaverton

13745 Sw Tualatin Valley Hwy.
97005 Beaverton
OR

Phone: +15037186080

FAX: 1111111111

www: <https://www.audibeaverton.com>



Further information (Disclaimer)

¹ Top track speed electronically limited in the U.S. Always obey speed and traffic laws.

Please note that although Audi Canada tries its best to avoid any pricing, fees, informational copy or image errors, there may be times where human error or omissions are encountered while developing and/or modifying the Audi Canada website. Audi Canada shall not be deemed liable or held responsible for any errors, omissions or any related issues to the information provided and contained on Audi.ca or external site linked to Audi.ca. The laws and courts of Ontario shall govern any issues related to Audi.ca, or external site linked to Audi.ca. All of the information contained in this site is for information purposes only and in no way constitutes an advertisement or an offer to buy or sell Audi vehicles. Manufacturer's Suggested Retail Price is for the Audi model selected (current model year available and in-market). Freight and PDI, license, insurance, registration, any dealer or other charges, options and taxes are not included. Actual prices are set by the dealer. This site shall not be used or relied upon by you as a substitute for information that is available to you from an authorized Audi dealer