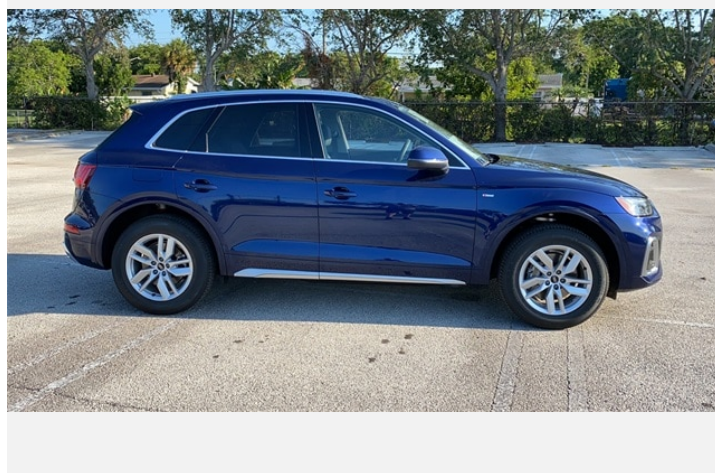
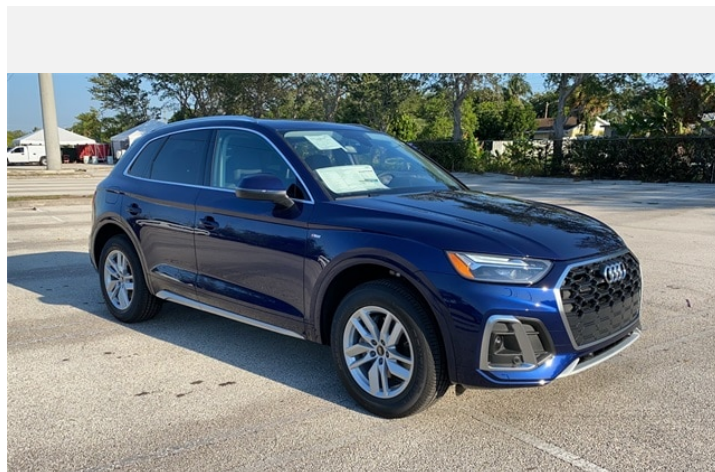
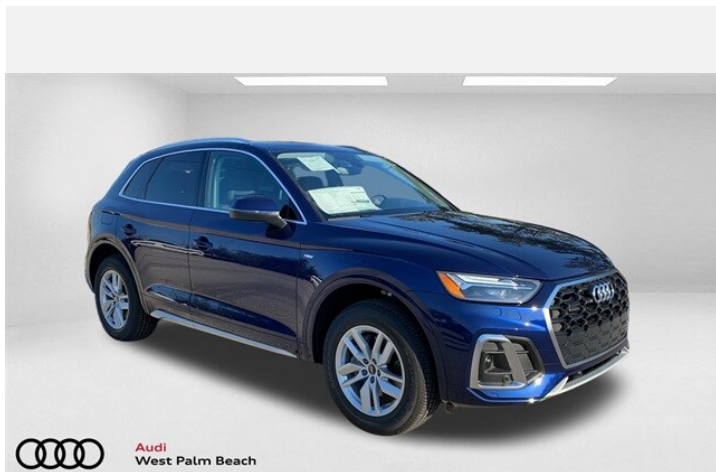




2022 Audi Q5

Premium 45 TFSI® S tronic®

Price as built : \$43,235



Audi Code

A8S010U8

www.audiusa.com/A8S010U8



Summary

Audi 2022 Audi Q5
Premium 45 TFSI® S tronic®

Price as built
\$43,235

Exterior colour

Navarra Blue metallic

Interior colour

| | |
|-----------|--------------------------------|
| Seats | Black with Rock Gray stitching |
| Dashboard | Black |
| Carpet | Black |
| Headliner | Gray |

Technical Specifications

| | |
|------------------------------|-------------------------|
| Engine type | 2.0-liter four-cylinder |
| Displacement/Bore and stroke | 1,984/82.5 x 92.8 cc/mm |
| Max. output | 261 HP |
| Torque | 273 lb-ft@rpm |
| Top track speed | 130 mph ¹ |
| Acceleration (0 - 60 mph) | 5.7 seconds |
| Recommended fuel | Premium |



Further Information

| | |
|-----------------|-------------|
| Type of vehicle | Used car |
| Mileage | 2,854 miles |

Warranty No

Audi Code
A8S010U8

Your configuration on www.audiusa.com
www.audiusa.com/A8S010U8

Commission number
8ba388ec0a0e0a9a2e0f

Equipment

Navarra Blue metallic

Audi advanced key-keyless start, stop and entry

Power-adjustable, auto-dimming, power-folding, heated exterior side mirrors with memory

Convenience package

Power panoramic sunroof

SiriusXM® with 90-day All Access trial subscription





Standard features

(1/2)

Safety and Security

| | |
|-----|--|
| 4UB | Driver and front passenger airbags |
| UH1 | Electromechanical parking brake |
| 8T2 | Cruise control system |
| VC2 | Garage door opener (Homelink®) |
| 4H5 | Electronic rear child door locks |
| QZ7 | Speed-sensitive electromechanical power steering system |
| 7K6 | Tire-pressure monitoring system |
| 4X3 | Advanced Airbag Protection System |
| 3B7 | Lower Anchors and Tethers for Children (LATCH) in rear seats |

Exterior

| | |
|-----|---|
| 1D8 | Trailer hitch provision |
| 1S1 | Tool kit and floor jack |
| 1BA | Standard suspension |
| 3S1 | Aluminum roof rails |
| 5J3 | Tailgate roof spoiler |
| 8IT | Full LED headlights with DRL signature |
| HX2 | 235/60 R18 all-season tires |
| 8VM | LED taillights with dynamic turn signal |
| 4KC | Heat-insulating side and rear windows |
| 4ZB | Aluminum trim around exterior windows |
| CB5 | 18" 5-arm turbine design wheels |

Interior

| | |
|-----|-----------------|
| QE1 | Storage package |
|-----|-----------------|

Interior

| | |
|-----|---|
| 4M3 | Four beverage holders |
| VT5 | Illuminated aluminum door sill inlays with S badging |
| 6NJ | Light cloth headliner |
| 9AQ | Three-zone automatic climate control system |
| 4L7 | Auto-dimming interior rear view mirror with digital compass and Integrated Toll Module® |
| QQ1 | LED interior lighting package |
| 6E3 | Front center armrest |
| 7F9 | Leather-wrapped gear selector |
| 4E7 | Power tailgate |
| 5XF | Driver and front-passenger extendable sun visors with illuminated vanity mirrors |
| 3NS | Sliding, split folding 40/20/40 rear seatbacks with adjustable recline |
| N1P | Leather seat covers |
| 4A3 | Heated front seats |
| 5MP | Brown Walnut Wood inlays |

Infotainment and Driver Assistance

| | |
|-----|---|
| 6K9 | Audi pre sense® city |
| 2H1 | Audi drive select |
| IU1 | Audi smartphone interface |
| IW3 | Audi connect® CARE assistance and security services (limited time subscription) |
| 7X2 | Parking system plus |
| KA2 | Rear view camera |
| 8G1 | High beam assist |



Standard features

(2/2)

Infotainment and Driver Assistance

| | |
|-----|--|
| 9VD | Audi sound system |
| 9S7 | 7.0" color driver information system |
| 6I3 | Audi active lane assist |
| 9ZX | Preparation for mobile phone (Bluetooth®) with streaming audio |



Dealer remarks

Audi West Palm Beach is proud to offer this Beautiful 2022 Audi Q5. This 45 S line Premium Q5 is beautifully finished in Navarra Blue Metallic and complimented by Black w/Leather Seating Surfaces. This vehicle comes well equipped with . quattro

Odometer is 2523 miles below market average!

At Audi West Palm Beach, We promise to provide you a tailor made luxury automotive experience not found anywhere. Audi West Palm has been serving South Florida and beyond for more than 20 years as an authorized Audi location based in West Palm Beach, FL. Our professional, highly-trained staff values your time, and is committed to ensuring you find the most suitable new or used luxury vehicle for your lifestyle. * All pricing and details are believed to be accurate, but we do not warrant or guarantee such accuracy. The prices shown above may vary from region to region, as will incentives and are subject to change without notice. Prices and payments do not include tax, tags, finance charges, doc charges, emission testing charges or other fees required by law, vehicle sellers or organizations. While every effort has been made to ensure display of accurate data, the vehicle listings within this website may not reflect all accurate vehicle items. Accessories and color may vary. All inventory listed is subject to prior sale. The vehicle photo displayed may be an example only. Vehicle photos may not match exact vehicles. Please confirm vehicle price with dealership. See dealer for details. Vehicle pricing subject to change based on inventory supply and market pricing.



Technical Specifications

(1/2)

Engineering | Performance

| | |
|------------------------------|--|
| Engine type | 2.0-liter four-cylinder |
| Power Level | 45 |
| Max. output | 261 HP |
| Displacement | 2.0 l |
| Towing capacity | 4,400 lb |
| Torque | 273 lb-ft@rpm |
| Valvetrain | 16-valve DOHC with Audi valvelift system and variable valve timing |
| Acceleration (0 - 60 mph) | 5.7 seconds |
| Induction/fuel injection | Turbocharged/TFSI® |
| Engine block | Cast-iron |
| Cylinder head | Aluminum-alloy |
| Displacement/Bore and stroke | 1,984/82.5 x 92.8 cc/mm |
| Top track speed ¹ | 130 mph |

Exterior Measurements

| | |
|-------------------------------|----------|
| Height | 65.5 in |
| Overall width without mirrors | 74.5 in |
| Length | 184.3 in |
| Drag coefficient | .32 Cw |
| Wheelbase | 111.0 in |
| Overall width with mirrors | 84.2 in |
| Track rear | 63.3 in |
| Track front | 63.6 in |
| Curb weight | 4,079 lb |

Suspension

| | |
|------------|-----------|
| Front axle | Five-link |
| Rear axle | Five-link |

Interior measurements

| | |
|--|---|
| Seating capacity | 5 |
| Shoulder room, rear | 56.5 in |
| Leg room, rear | 38.0 in |
| Head room with front sunroof | 38.1 in |
| Shoulder room, front | 57.7 in |
| Head room with rear sunroof | 37.7 in |
| Leg room, front | 40.9 in |
| Head room, rear | 39.3 in |
| Head room, front | 39.6 in |
| Cargo volume, rear seatbacks up/folded | 25.8/54.0 (25.6/53.5 with sunroof) cu ft, cu ft |

Electrical system

| | |
|---------------|--|
| Hybrid engine | 12-volt Mild Hybrid Electric Vehicle (MHEV) technology |
|---------------|--|

Transmission | Drivetrain

| | |
|-----------------|--|
| Drivetrain type | quattro® all-wheel drive with ultra® technology |
| Transmission | Seven-speed S tronic® dual-clutch automatic transmission |



Technical Specifications

(2/2)

Steering

| | |
|--------------------------------|---|
| Steering type | Electromechanical progressive steering system |
| Turning diameter, curb-to-curb | 38.7 ft |
| Steering ratio | 15.9:1 |

Brakes

| | |
|--------------|---------------------------|
| Front brakes | 13.3 (ventilated disc) in |
| Rear brakes | 13.0 (ventilated disc) in |

Body

| | |
|----------|---|
| Material | Lightweight technology—multi-material construction (steel and aluminum) |
|----------|---|



Contact

Dealer

Audi West Palm Beach

2101 Okeechobee Blvd
33409 West Palm Beach
FL

Phone: +15616882000

FAX: 5612423188

www: <https://www.audiwestpalmbeach.com>



Further information (Disclaimer)

¹ Top track speed electronically limited in the U.S. Always obey speed and traffic laws.

Please note that although Audi Canada tries its best to avoid any pricing, fees, informational copy or image errors, there may be times where human error or omissions are encountered while developing and/or modifying the Audi Canada website. Audi Canada shall not be deemed liable or held responsible for any errors, omissions or any related issues to the information provided and contained on Audi.ca or external site linked to Audi.ca. The laws and courts of Ontario shall govern any issues related to Audi.ca, or external site linked to Audi.ca. All of the information contained in this site is for information purposes only and in no way constitutes an advertisement or an offer to buy or sell Audi vehicles. Manufacturer's Suggested Retail Price is for the Audi model selected (current model year available and in-market). Freight and PDI, license, insurance, registration, any dealer or other charges, options and taxes are not included. Actual prices are set by the dealer. This site shall not be used or relied upon by you as a substitute for information that is available to you from an authorized Audi dealer