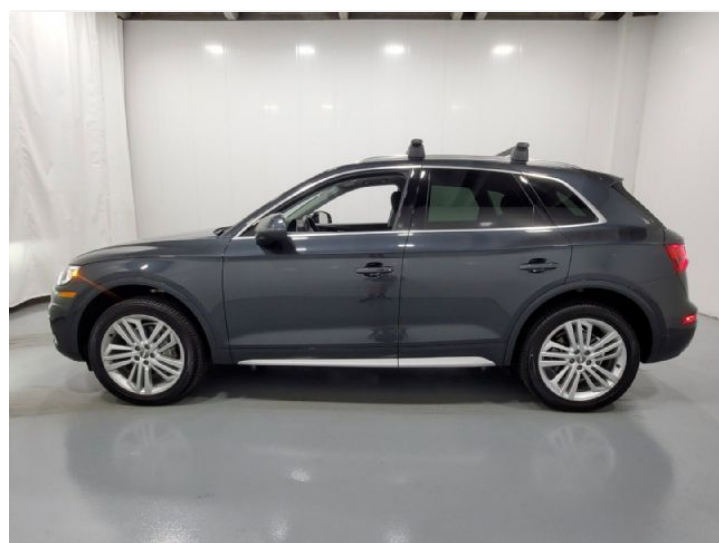




# 2020 Audi Q5

Premium Plus 45 TFSI® quattro® S tronic®

Price as built : \$39,374



Audi Code

**AADMFMQT**

[www.audiusa.com/AADMFMQT](http://www.audiusa.com/AADMFMQT)





# Summary

**Audi 2020 Audi Q5**  
Premium Plus 45 TFSI® quattro® S tronic®

**Price as built**  
\$39,374

## Exterior colour

Manhattan Gray metallic

## Interior colour

Seats	Black
Dashboard	Black
Carpet	Black
Headliner	Gray

## Technical Specifications

Engine type	2.0-liter four-cylinder
Displacement/Bore and stroke	1,984/82.5 x 92.8 cc/mm
Torque	273 lb-ft@rpm
Top track speed	130 mph mph
Acceleration (0 - 60 mph)	5.9 seconds seconds
Recommended fuel	Premium



## Further Information

Type of vehicle	Used car
Mileage	35,816 miles

**Warranty** No

**Audi Code**  
AADMFMQT

**Your configuration on [www.audiusa.com](http://www.audiusa.com)**  
[www.audiusa.com/AADMFMQT](http://www.audiusa.com/AADMFMQT)

**Commission number**  
ac8b5aab0a0e0a910d98



# Standard features



---

## Dealer remarks

---

\* AUDI CERTIFIED PRE-OWNED VEHICLE, \*AWD, \*PREMIUM PLUS PACKAGE, \*AUDI MMI NAVIGATION PLUS, \*PANORAMIC ROOF, \*LEATHER INTERIOR, \*HEATED SEATS, \*HEATED REAR SEATS, \*HEATED STEERING WHEEL, \*BACK UP CAMERA, \*BLUETOOTH, \*BANG & OLUFSEN SOUND, \*19WHEEL PACKAGE, All-Weather Floor Mats, Audi Advanced Key, Audi Connect PRIME & PLUS, Audi Phone Box, Audi Pre Sense Rear, Audi Side Assist, Audi Virtual Cockpit, Auto-Dimming Power Folding Exterior Mirrors, Bang & Olufsen Sound System w/3D Sound, Cold Weather Package, Convenience Package, Convenience Plus Package, Driver Seat Memory, Front Door Sills w/Aluminum Inlay, Heated Rear Seats, Heated Steering Wheel, Leatherette Covered Center Console & Door Armrests, LED Headlights, Panoramic Sunroof, Premium Plus Package, Radio: MMI Navigation Plus w/MMI Touch, SiriusXM All Access Service, USB Charge Ports for Rear Seats, Wheels: 20 5-Segment-Spoke Design.

CARFAX One-Owner. Clean CARFAX. 2020 Audi Q5 45 Premium Plus quattro 7-Speed Automatic S tronic

Audi Certified pre-owned Details:

- \* Warranty Deductible: \$0
- \* Roadside Assistance for two years with unlimited miles. Certified pre-owned Limited Warranty: For all CPO sales on or after 7/1/22, if New Vehicle Limited Warranty (NVLW) coverage remains at time of CPO purchase, CPO Limited Warranty Coverage commences upon expiration of NVLW and continues for a period of two years or 50,000 miles, whichever occurs first. If NVLW coverage has expired at time of CPO purchase, CPO Limited Warranty coverage commences at time of purchase and continues for two years or 50,000 miles, whichever occurs first. CPO Limited Warranty is transferable between private parties.
- \* Vehicle History
- \* Roadside Assistance
- \* Transferable Warranty
- \* 125+ Point Inspection



# Technical Specifications

(1/2)

## Engineering | Performance

Engine type	2.0-liter four-cylinder
Engine block	Cast-iron
Induction/fuel injection	Turbocharged/TFSI®
Displacement	2.0 l
Cylinder head	Aluminum-alloy
Max. output ps/hp	248 @ rpm
Towing capacity	4,400-lb lb
Displacement/Bore and stroke	1,984/82.5 x 92.8 cc/mm
Valvetrain	16-valve DOHC with Audi valvelift system

## power

Power Level	45
Displacement/Bore and stroke	1,984/82.5 x 92.8 cc/mm
Torque	273 lb-ft@rpm

## Transmission | Drivetrain

Drivetrain type	quattro® all-wheel drive with ultra® technology
Transmission	Seven-speed S tronic® dual-clutch automatic transmission

## chassis

Front axle	Five-link front suspension
Rear axle	Five-link rear suspension

## Brakes

Front brakes	13.3 (ventilated disc) in
Rear brakes	13.0 (ventilated disc) in

## Steering

Steering type	Electromechanical power steering system
Turning diameter, curb-to-curb	38.4 ft
Steering ratio	15.8: 1

## Volumes

Cargo volume, rear seatbacks up/folded	25.1/53.1 cu ft, cu ft
Fuel	18.5 gal

## Performance data

Acceleration (0 - 60 mph)	5.9 seconds seconds
Top track speed	130 mph mph

## Electrical system

Alternator	110-150 A
Battery	420 A/75 Ah

## Body

Material	Multi-material body construction (steel and aluminum composition)
----------	---



# Technical Specifications

(2/2)

---

## Warranty | Maintenance

Warranty	4-year/50,000-mile Audi New Vehicle Limited Warranty
----------	--

---

## Exterior Measurements

Height	65.3 in
Overall width without mirrors	74.5 in
Length	183.6 in
Wheelbase	111.0 in
Drag coefficient	0.32 Cw
Overall width with mirrors	84.3 in
Track rear	63.3 in
Track front	63.6 in
Curb weight	4045 lb
Ground clearance, loaded	8.2 in

---

## Interior measurements

Seating capacity	5
Shoulder room, rear	56.5 in
Head room with front sunroof	40.2 in
Leg room, rear	37.8 in
Shoulder room, front	57.7 in
Head room with rear sunroof	37.7 in
Head room, rear	39.3 in
Leg room, front	41.0 in
Head room, front	41.7 in



---

# Contact

Dealer

**Audi Creve Coeur**

11830 Olive Blvd.  
63141 Creve Coeur  
MO

Phone: +13143011700

FAX: 3143011738

www: <https://www.audicrevecoeur.com>



## Further information (Disclaimer)

Please note that although Audi Canada tries its best to avoid any pricing, fees, informational copy or image errors, there may be times where human error or omissions are encountered while developing and/or modifying the Audi Canada website. Audi Canada shall not be deemed liable or held responsible for any errors, omissions or any related issues to the information provided and contained on Audi.ca or external site linked to Audi.ca. The laws and courts of Ontario shall govern any issues related to Audi.ca, or external site linked to Audi.ca. All of the information contained in this site is for information purposes only and in no way constitutes an advertisement or an offer to buy or sell Audi vehicles. Manufacturer's Suggested Retail Price is for the Audi model selected (current model year available and in-market). Freight and PDI, license, insurance, registration, any dealer or other charges, options and taxes are not included. Actual prices are set by the dealer. This site shall not be used or relied upon by you as a substitute for information that is available to you from an authorized Audi dealer