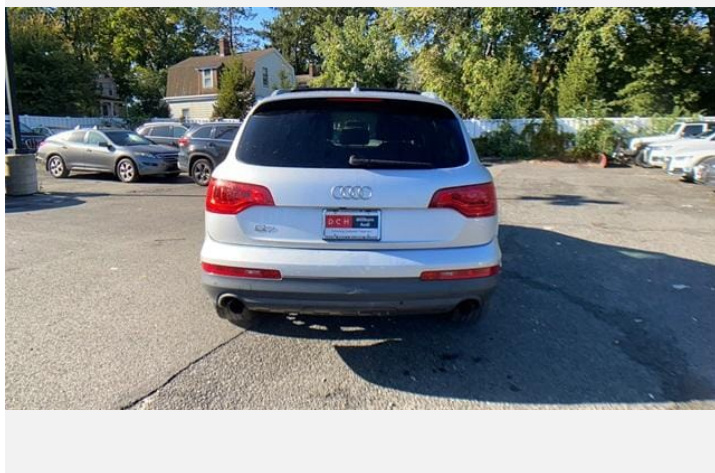
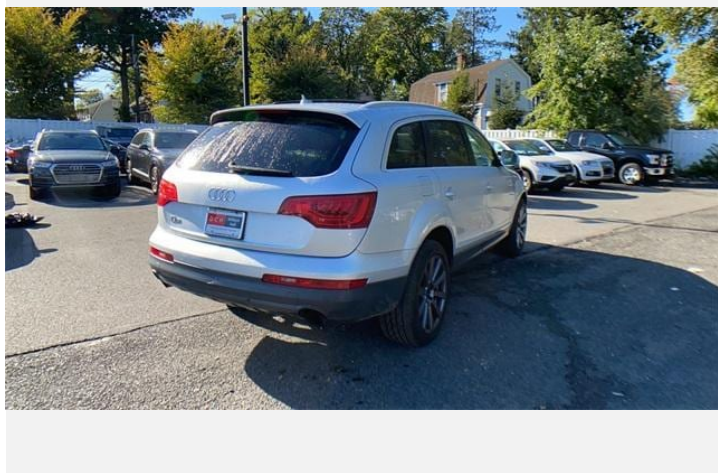
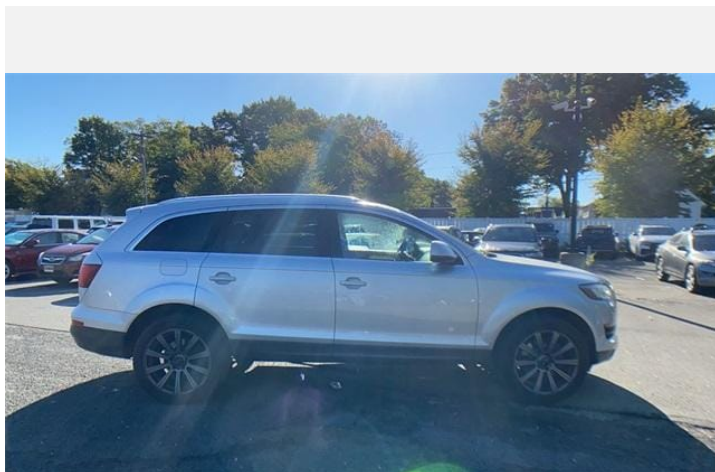
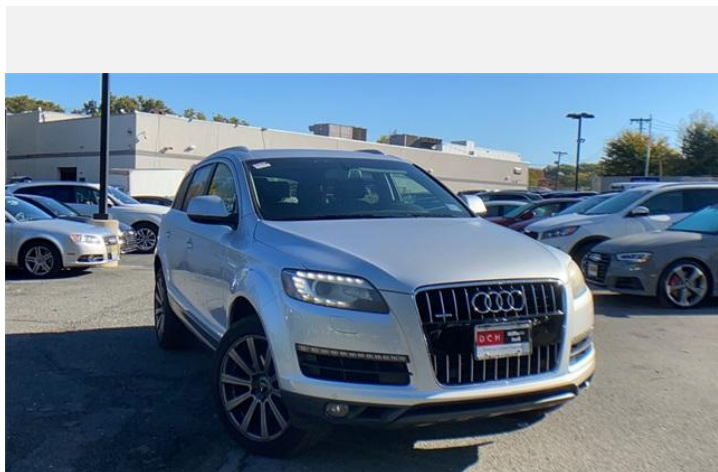




# 2011 Audi Q7

Premium Plus 3.0 TFSI 272 HP tiptronic

Price as built : \$12,500



Audi Code

**ABBWNV16**

[www.audiusa.com/audiocode/ABBWNV16](http://www.audiusa.com/audiocode/ABBWNV16)





# Summary

---

**Audi 2011 Audi Q7**  
Premium Plus 3.0 TFSI 272 HP tiptronic

**Price as built**  
\$12,500

---

**Exterior colour**  
Ice Silver metallic

**Interior colour**

---

## Technical Specifications

Engine type	3.0 liter supercharged, DOHC V6 gasoline engine with FSI® direct injection and variable intake manifold
Displacement	3,000 cm <sup>3</sup>
Max. output	200 (272)/4750-65001 HP
Torque	400/2250-4750 lb-ft@rpm
Top track speed	130 mph mph
Acceleration (0 - 60 mph)	7.8 sec. seconds
Recommended fuel	Premium



---

## Further Information

Type of vehicle	Used car
Mileage	105,271 miles

---

**Warranty** No

---

**Audi Code**  
ABBWNV16

**Your configuration on [www.audiusa.com](http://www.audiusa.com)**  
[www.audiusa.com/audicode/ABBWNV16](http://www.audiusa.com/audicode/ABBWNV16)

**Commission number**  
e02e85f90a0e0adf17d4

# Equipment

(1/2)

---

Ice Silver metallic

---

Audi xenon plus headlights with automatic self-leveling and integrated LED daytime running lights

---

Automatic, dynamic headlight-range adjustment (self-adjusting while driving)

---

Panoramic sunroof

---

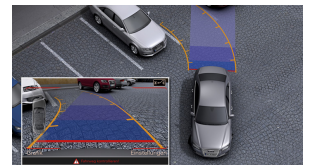


DVD player

---

Audi parking system plus with rearview camera

---



BOSE Surround Sound

---

Color driver information system

---



MMI® Navigation plus

---

Center console-mounted six-disc CD changer, in-dash single CD player and DVD capability



---

# Equipment

(2/2)

---

Voice control system [controls mobile phone, audi and navigation]



# Standard features

---

## Safety and Security

4UB	Driver and front passenger advanced dual-stage airbag supplemental restraints
4H5	Power child-safety window and rear door locks
7K6	In-direct Tire Pressure Monitoring System (TPMS)
3B7	Lower Anchorage and Tethers for Children (LATCH) in rear seats

---

## Exterior

1D8	Trailer hitch preparation
1S1	Tool kit in storage compartment in trunk
3S1	Aluminum roof rails
C3C	18" six-spoke wheels with 255/55 all-season tires
HS8	18" 255/55 R18 wheels with all-season tires
4KF	Privacy glass
4ZB	Brushed aluminum trim on roof rails and around side windows

---

## Interior

QE1	Storage package
9AD	Automatic dual-zone climate control
4L7	Auto-dimming interior mirror w/ compass
QQ1	Additional interior and exterior lighting
2ZQ	Multifunction Leather Steering Wheel
2C5	Manual tilt and telescoping steering column

---

## Interior

5XL	Without manual rear sunshades in rear doors/in the tailgate
0TD	Front and rear floor mats
5TS	Wood decorative inlays

---

## Seating

7P1	Power adjustable four-way lumbar adjustment for driver and front passenger seats
N1F	Leather seating surfaces
4A3	Six-step heated front seats
Q1A	Twelve-way power adjustable four-way lumbar adjustment for driver and front passenger seats

---

## Infotainment/Technology

1BW	Comfort suspension
UF7	Audi music interface with iPod® cable
8T1	Electronic cruise control
QZ0	Servotronic® speed-sensitive close-ratio power steering for sporty handling
4E9	Power open/close tailgate with programmable opening angle
8N6	Windshield wipers with four-position adjustable rain sensor rate
4I2	Central locking system with selective unlock feature
QV8	HD Radio
9ZX	Preparation for mobile phone (Bluetooth)



---

## Dealer remarks

---

CARFAX 1-Owner. 3.0T Premium Plus trim. 3rd Row Seat, NAV, Heated Leather Seats, Power Liftgate, Rear Air, Panoramic Roof, Tow Hitch, Alloy Wheels, All Wheel Drive.

### KEY FEATURES INCLUDE

Leather Seats, Third Row Seat, Navigation, Panoramic Roof, All Wheel Drive, Power Liftgate, Rear Air, Heated Driver Seat, Back-Up Camera, Supercharged, Premium Sound System, Satellite Radio, iPod/MP3 Input, Bluetooth, Trailer Hitch. MP3 Player, Keyless Entry, Remote Trunk Release, Privacy Glass, Child Safety Locks.

### EXPERTS ARE SAYING

CarAndDriver.com's review says "The diesel's low-end torque suits the Q7 well. Blown V-6 is strong and efficient."

### SHOP WITH CONFIDENCE

CARFAX 1-Owner

### WHY BUY FROM US

At DCH Millburn Audi, we're always striving to set ourselves apart from other luxury dealerships here in New Jersey. As a part of the Fortune 500-ranked Lithia Motors, Inc. our aim here at DCH Millburn Audi has always been to deliver the unparalleled quality of customer service and employee satisfaction. What's more, with the prestigious Audi Elite Magna Society Award under our proverbial belts, you can be certain that you'll enjoy a simply unparalleled dealership experience when you shop with

Pricing analysis performed on 11/25/2020. Please confirm the accuracy of the included equipment by calling us prior to purchase.



# Technical Specifications

(1/2)

## Engineering | Performance

Engine type	3.0 liter supercharged, DOHC V6 gasoline engine with FSI® direct injection and variable intake manifold
Acceleration (0 - 60 mph)	7.8 sec. seconds
Max. output	200 (272)/4750-65001 HP
Engine block	Aluminum alloy
Induction/fuel injection	Fully electronic engine management with drive-by-wire throttle control, direct petrol injection, cylinder selective lambda control
Cylinder head	Aluminum alloy
Max. output ps/hp	272 hp @ 5100 rpm @ rpm
Displacement	3,000 cm <sup>3</sup>
Max. output KW	228 kW
Top track speed	130 mph mph
Torque	400/2250-4750 lb-ft@rpm
Valvetrain	DOHC, mechanical charger module with 2 intercoolers, 2 charge movement flaps, chain driven, 4 valves per cylinder

## Electrical system

Alternator	14 volts [190 amp]
Battery	12 volts [80 amp/hr]

## Transmission | Drivetrain

Rear Differential, for quattro	Hypoid gear, electronically locking (EDL)
Front Differential	Hypoid gear, electronically locking (EDL)
Layout	Front-wheel drive
Center Differential	Self-locking differential providing automatic and variable front to rear power proportioning
Transmission	Tiptronic

## Steering

Steering type	Vehicle speed-sensitive power rack and pinion, maintenance-free
Turning diameter, curb-to-curb	39.4 ft. [12 m] ft
Steering ratio	16.5:1

## Suspension

Front axle	Front double-wishbone independent steel spring suspension
Rear axle	Rear four-link independent steel spring suspension

## Brakes

Front brakes	13.8 in. [350 mm] Ventilated disc in
Rear brakes	13 in. [330 mm] Ventilated disc in
Parking brake	mechanically actuated at the rear wheels
Brakes system	Dual-circuit brake system with diagonal split, Anti-lock Brake System (ABS), Electronic Brake pressure Distribution (EBD) and Electronic Stabilization Program (ESP); tandem brake booster



# Technical Specifications

(2/2)

## Body

Material	Unitized steel structure with integrated aluminum and magnesium components
Corrosion protection	All steel parts are 100% dual-side zinc-galvanized (12 year limited warranty against corrosion perforation)

## Warranty | Maintenance

Warranty	The first scheduled maintenance service at 5,000 miles or twelve months, whichever comes first, free of charge. Four years or 50,000 miles, whichever comes first, new vehicle limited warranty. Twelve year limited warranty against corrosion perforation. Audi 24-hour Roadside Assistance for four years
----------	--

## Interior measurements

Seating capacity	7
Shoulder room, rear	48.6 in. [1235 mm] in
Shoulder room, front	58.7 in. [1490 mm] in
EPA Class	Light Truck
Int. vol. (EPA)	55.3 cu. ft. EPA
Head room, rear	35.6 in. [904 mm] in
Head room, front	39.5 in. [1003 mm] in
Cargo volume, rear seatbacks up/folded	10.9 cu. ft. 42.0 cu. ft. (3rd row folded) 72.5 cu. ft. (2nd + 3rd row folded) 144.1 cu. ft (total including trunk volume) cu ft, cu ft

## Exterior Measurements

Height	68.4 in. [1737 mm] in
Overall width without mirrors	78.1 in. [1984 mm] in
Length	200.3 in. [5089 mm] in
Wheelbase	118.2 in. [3002 mm] in
Drag coefficient	Cd= 0.37   Cd= 0.35 w/ adaptive air suspension Cw
Overall width with mirrors	85.7 [2177 mm] in
Track rear	66 in. [1676 mm] in
Track front	65 in. [1651 mm] in
Curb weight	5,192 lbs. [2355 kg] lb
Ground clearance, loaded	8.1 in. [205 mm]   9.4 in. [240mm] w/ adaptive air suspension in





---

# Consumption- and emission

---

Consumption by NEDC

---



---

# Contact

Dealer

**DCH Millburn Audi**

2211 Millburn Avenue  
07040 Maplewood

Phone: +19737628500

FAX: 9737620737

www: <https://www.dchmillburnaudinj.com/>



---

## Further information (Disclaimer)

Please note that although Audi Canada tries its best to avoid any pricing, fees, informational copy or image errors, there may be times where human error or omissions are encountered while developing and/or modifying the Audi Canada website. Audi Canada shall not be deemed liable or held responsible for any errors, omissions or any related issues to the information provided and contained on Audi.ca or external site linked to Audi.ca. The laws and courts of Ontario shall govern any issues related to Audi.ca, or external site linked to Audi.ca. All of the information contained in this site is for information purposes only and in no way constitutes an advertisement or an offer to buy or sell Audi vehicles. Manufacturer's Suggested Retail Price is for the Audi model selected (current model year available and in-market). Freight and PDI, license, insurance, registration, any dealer or other charges, options and taxes are not included. Actual prices are set by the dealer. This site shall not be used or relied upon by you as a substitute for information that is available to you from an authorized Audi dealer