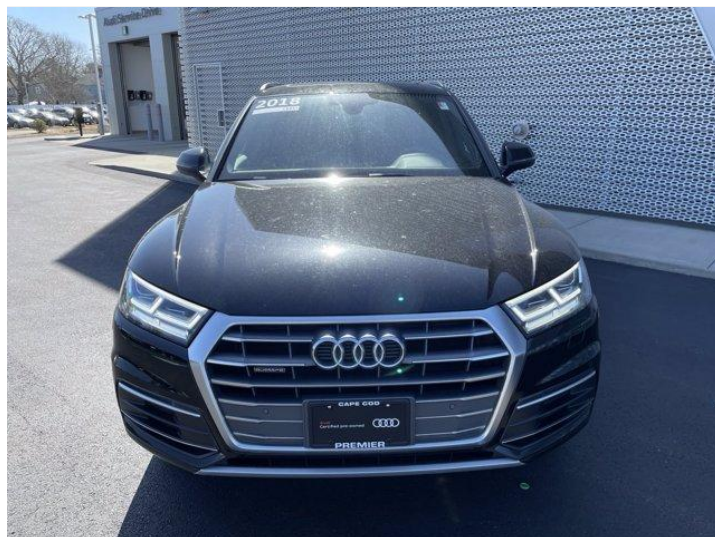




2018 Audi Q5

Premium Plus 2.0TFSI® quattro® all-wheel drive S tronic®

Price as built : \$31,975



Audi Code

ABD6QD8B

www.audiusa.com/ABD6QD8B



Summary

Audi 2018 Audi Q5
Premium Plus 2.0TFSI quattro all-wheel drive S tronic

Price as built
\$31,975

Exterior colour

Interior colour

Technical Specifications

Engine type	Four-cylinder
Displacement/Bore and stroke	1,984/82.5 x 92.8 cc/mm
Max. output	185 kW
Torque	273 @ 1,600 - 4,500 lb-ft@rpm
Top track speed	130 mph
Acceleration (0 - 60 mph)	5.9 seconds
Recommended fuel	Premium



Further Information

Type of vehicle	Used car
Mileage	48,950 miles

Warranty No

Audi Code
ABD6QD8B

Your configuration on www.audiusa.com
www.audiusa.com/ABD6QD8B

Commission number
0e0d13ec0a0e0adf1b39



Dealer remarks

CARFAX 1-Owner. FUEL EFFICIENT 27 MPG Hwy/23 MPG City! Sunroof, Heated Leather Seats, NAV, Panoramic Roof, Turbo, Power Liftgate, All Wheel Drive, NAVIGATION PACKAGE, COLD WEATHER PACKAGE, WHEELS: 8" X 19" 5-ARM-WING DESIGN WH...

KEY FEATURES INCLUDE

Leather Seats, Sunroof, Panoramic Roof, All Wheel Drive, Power Liftgate.

OPTION PACKAGES

PREMIUM PLUS PACKAGE Audi Connect CARE, assistance and security services w/limited time subscription, Audi Side Assist w/Pre Sense Rear, Rear Cross Traffic Assist, Vehicle Exit Assist, SiriusXM All Access Service, Heated Auto-Dimming & Power-Adjustable Mirrors Body-colored and power folding, Parking System Plus (Front/Rear Acoustic Sensors), selective display, automatically engages in drive and reverse under 6 mph, can be disabled in the MMI settings or temporarily turned off by simply pressing the P button on the center console, Driver Seat Memory, Full LED Headlights, LED dipped and high beams, DRLs, static turn signals as well as all-weather light, Stainless Steel Door Sills, High Gloss Window Surrounds, Audi Advanced Key, keyless start/stop and entry, NAVIGATION PACKAGE Audi Virtual Cockpit, 12.3" LCD fully digital instrument cluster and up to three visual modes: classic and infotainment, Audi Connect PRIME & PLUS, online services w/, Radio: MMI Navigation Plus System, 8.3" TFT color center infotainment/navigation display

EXPERTS REPORT

CARFAX 1-Owner

BUY FROM AN AWARD WINNING DEALER

Premier Companies offers the friendly individualized attention of a local store with best-in-class service to deliver a vehicle purchasing experience that exceeds expectations. We have proudly been in the automotive business serving our communities for over 30 years.

Pricing analysis performed on 4/21/2021. Horsepower calculations based on trim engine configuration. Fuel economy calculations based on original manufacturer data for trim engine configuration. Please confirm the accuracy of the included equipment by calling us prior to purchase.



Technical Specifications

(1/2)

Engineering | Performance

Engine type	Four-cylinder
Max. output	185 kW
Displacement	2.0 l
Horsepower	252 @ 5,000 – 6,000 @ rpm
Towing capacity	Trailer hitch provision with 4,400-lb maximum towing capacity and 440-lb tongue weight lb
Max. output kW	185 kW
Torque	273 @ 1,600 – 4,500 lb-ft@rpm
Valvetrain	16-valve DOHC with Audi valvelift system
Acceleration (0 - 60 mph)	5.9 seconds
Engine block	Cast-iron
Induction/fuel injection	Turbocharged/TFSI®
Cylinder head	Aluminum-alloy
Displacement/Bore and stroke	1,984/82.5 x 92.8 cc/mm
Top track speed	130 mph

Electrical system

Alternator	110-150 A
Battery	420 A/75 Ah

Transmission | Drivetrain

Gear ratios: 6th	0.508: 1
Gear ratios: Final Drive	5.302: 1
Gear ratios: 7th	0.386: 1
Gear ratios: 4th	1.057: 1
Transmission	Seven-speed S tronic® dual-clutch automatic transmission and quattro® all-wheel drive with ultra® technology
Gear ratios: 5th	0.738: 1
Layout	quattro®
Gear ratios: 2nd	2.190: 1
Gear ratios: 3rd	1.517: 1
Gear ratios: Reverse	2.750: 1
Transmission	S tronic
Gear ratios: 1st	3.188: 1

Steering

Steering type	Electromechanical power steering system
Turning diameter, curb-to-curb	38.4 ft
Steering ratio	15.8: 1

Suspension

Front axle	Five-link front suspension
Rear axle	Five-link rear suspension



Technical Specifications

(2/2)

Brakes

Front brakes	13.3 (ventilated disc) in
Rear brakes	13.0 (ventilated disc) in

Body

Material	Multi-material body construction (steel and aluminum composition)
----------	---

Warranty | Maintenance

Warranty	4-year/50,000-mile Audi New Vehicle Limited Warranty
Maintenance	12-month/10,000-mile (whichever occurs first) NO CHARGE first scheduled maintenance

Interior measurements

Seating capacity	5
Shoulder room, rear	56.5 in
Head room with front sunroof	40.2 in
Leg room, rear	37.8 in
Shoulder room, front	57.7 in
Head room with rear sunroof	37.7 in
Head room, rear	39.3 in
Leg room, front	41.0 in
Head room, front	41.7 in
Cargo volume, rear seatbacks up/folded	26.8/60.4 cu ft, cu ft

Exterior Measurements

Height	65.3 in
Overall width without mirrors	74.5 in
Length	183.6 in
Wheelbase	111.0 in
Drag coefficient	0.32 Cw
Overall width with mirrors	84.3 in
Track rear	63.3 in
Track front	63.6 in
Curb weight	4,045 lb
Ground clearance, loaded	8.2 in



Consumption- and emission

Consumption by NEDC

urban	23.0 mpg
extra-urban	27.0 mpg
combined	25.0 mpg



Contact

Dealer

Audi Cape Cod

25 Falmouth Rd.
02601 Hyannis

Phone: +15088155600

FAX: 5085689410

www: <https://www.audicapecod.com>



Further information (Disclaimer)

Please note that although Audi Canada tries its best to avoid any pricing, fees, informational copy or image errors, there may be times where human error or omissions are encountered while developing and/or modifying the Audi Canada website. Audi Canada shall not be deemed liable or held responsible for any errors, omissions or any related issues to the information provided and contained on Audi.ca or external site linked to Audi.ca. The laws and courts of Ontario shall govern any issues related to Audi.ca, or external site linked to Audi.ca. All of the information contained in this site is for information purposes only and in no way constitutes an advertisement or an offer to buy or sell Audi vehicles. Manufacturer's Suggested Retail Price is for the Audi model selected (current model year available and in-market). Freight and PDI, license, insurance, registration, any dealer or other charges, options and taxes are not included. Actual prices are set by the dealer. This site shall not be used or relied upon by you as a substitute for information that is available to you from an authorized Audi dealer.