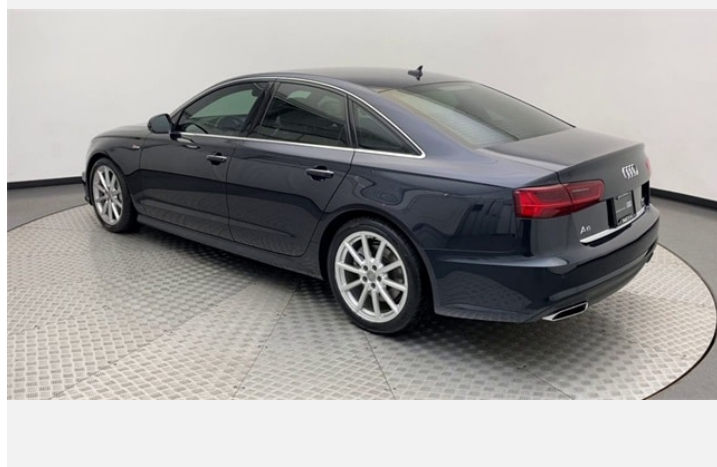
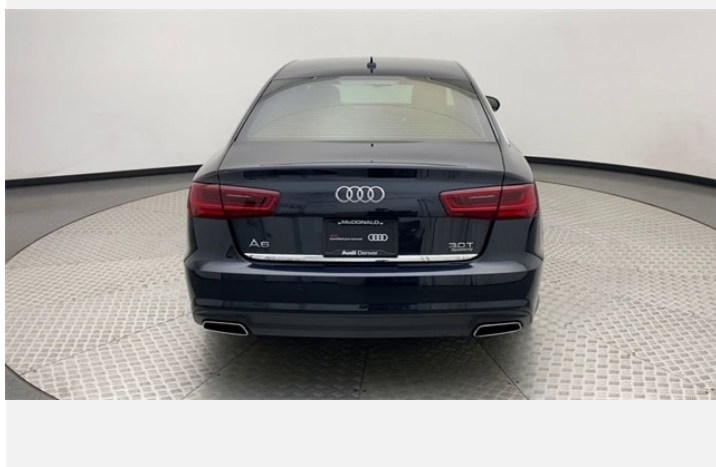
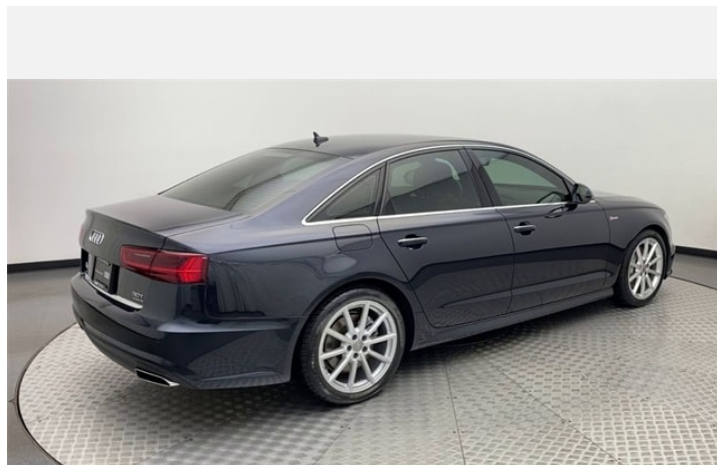
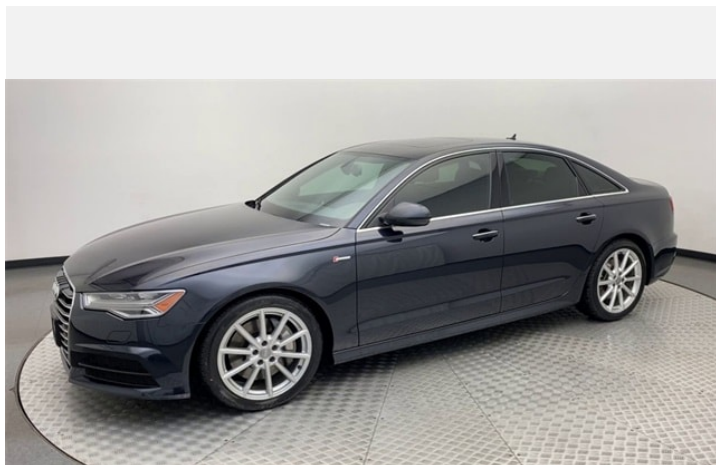




# 2017 Audi A6 Sedan

Premium Plus 3.0 TFSI quattro 333 HP tiptronic 8-speed

Price as built : \$31,649



Audi Code

**ADFRSYA9**

[www.audiusa.com/audiocode/ADFRSYA9](http://www.audiusa.com/audiocode/ADFRSYA9)





# Summary

**Audi 2017 Audi A6 Sedan**  
Premium Plus 3.0 TFSI quattro 333 HP tiptronic 8-speed

**Price as built**  
\$31,649

**Exterior colour**  
Moonlight Blue metallic

**Interior colour**

Seats	Black
Dashboard	Black
Carpet	Black
Headliner	Lunar Silver

**Technical Specifications**

Engine type	Six-cylinder
Displacement/Bore and stroke	2,995/84.5 x 89.0 cc/mm
Torque	325 @ 2,900 - 5,300 lb-ft@rpm
Top track speed	130 mph mph
Acceleration (0 - 60 mph)	5.1 seconds seconds
Recommended fuel	Premium



## Further Information

Type of vehicle	Used car
Mileage	42,741 miles

**Warranty**  
No

**Audi Code**  
ADFRSYA9

**Your configuration on [www.audiusa.com](http://www.audiusa.com)**  
[www.audiusa.com/audicode/ADFRSYA9](http://www.audiusa.com/audicode/ADFRSYA9)

**Commission number**  
c3c971df0a0e0a171142



# Equipment

---

Moonlight Blue metallic

---

---

Full LED headlights

---



---

19" Audi Sport® 10-spoke design wheels

---

---

19" 255/40 all-season tires

---

---

Black cloth headliner

---



---

Three-spoke heated multifunction steering wheel with shift paddles

---



---

Cold weather package

---



---

19" Sport package

---



---

Heated rear seats

---



---

Sport suspension

---



# Standard features

---

## Safety and Security

4UH	Driver and front-passenger advanced airbags and knee airbags
1AS	Electronic stabilisation program ESP
7K6	Tire-pressure monitoring system
3B7	ISOFIX child seat mounting and Top Tether anchorage point for outer rear seats

---

## Exterior

0P0	Dual exhaust outlets
1S1	Tool kit and car jack
8Q3	Automatic headlight leveling
8SL	LED taillights
VW5	Acoustic glass
4ZB	High-gloss package

---

## Interior

QE1	Storage nets in backs of front seats
3FE	Electric slide/tilt sunroof with sun screen/sunblind
7M8	Aluminum door sill inlays with S line® emblem
9AQ	Three-zone automatic climate control
4L6	Auto-dimming interior rear view mirror
QQ1	Illumination for interior door handles, air vent controls, front footwells
2C7	Steering wheel with electric tilt and axial adjustment
6E3	Front center armrest
0TD	Front and rear floor mats

---

## Interior

5MG	Dark Brown Walnut Wood inlays
-----	-------------------------------

---

## Seating

3NZ	Split folding 60/40 rear seat backs
7P7	4-way driver seat lumbar support
N1F	Leather seating surfaces
Q1A	Standard front seats

---

## Infotainment/Technology

UJ1	MMI touch®
7X2	Audi parking system with rear view camera
7W3	Audi pre sense® rear
UI2	Audi smartphone interface
8T1	Cruise control with coast, resume and accelerate features
VC2	Garage door opener (HomeLink®)
KA2	Rear view camera
8RY	BOSE Surround Sound System
9Q8	Color driver information system
7UG	MMI® navigation plus with Audi connect®
18H	MMI® radio
4E2	Electric tailgate/trunk lid release from inside
7Y1	Audi side assist
4I3	Audi advanced key - keyless start, stop and entry
9ZK	Audi connect



---

## Dealer remarks

---

Audi Certified Pre-Owned-- FACTORY WARRANTY FOR 5 YEARS FROM ORIGINAL SALE DATE WITH UNLIMITED MILES!!

CLEAN CARFAX 1-OWNER \*\* AUDI CERTIFIED \*\* ALL WHEEL DRIVE \*\* LEATHER \*\* HEATED FRONT AND REAR SEATS \*\* HEATED STEERING WHEEL \*\* NAVIGATION \*\* SPORT SUSPENSION \*\* 19" WHEELS \*\* 2017 Audi A6 3.0T Premium Plus. MECHANICALLY INSPECTED AND RECONDITIONED " CALL TODAY!

Audi Certified Pre-Owned. This car has been through Audi's 300+ inspection and reconditioning process and includes a warranty extension to 5 years from original sale date with UNLIMITED MILES and NO Deductible!! Audi Certified Pre-Owned vehicles include complimentary roadside assistance, trip interruption service, and special financing rates. Call or email now and see why Audi Denver is the region's volume AND customer satisfaction leader in both new and Certified Pre-Owned Audi vehicles.



# Technical Specifications

(1/2)

## Engineering | Performance

Engine type	Six-cylinder
Acceleration (0 - 60 mph)	5.1 seconds
Engine block	Aluminum-alloy
Induction/fuel injection	Supercharged/TFSI®
Cylinder head	Aluminum-alloy
Max. output ps/hp	333 @ 5,500 - 6,500 @ rpm
Displacement/Bore and stroke	2,995/84.5 x 89.0 cc/mm
Max. output KW	245 kW
Top track speed	130 mph
Torque	325 @ 2,900 - 5,300 lb-ft@rpm
Valvetrain	24-valve DOHC with variable valve timing

## Driveline

Gear ratios: 8th	0.667: 1
Gear ratios: 6th	1.000: 1
Gear ratios: 7th	0.839: 1
Gear ratios: Reverse	3.317: 1
Drivetrain type	Automatic
Gear ratios: Final Drive	2.848: 1
Gear ratios: 4th	1.667: 1
Transmission	Eight-speed Tiptronic® automatic transmission with quattro® all-wheel-drive
Gear ratios: 5th	1.285:1
Layout	quattro®
Gear ratios: 2nd	3.143: 1
Gear ratios: 3rd	2.106: 1
Transmission	Tiptronic
Gear ratios: 1st	4.714: 1

## Steering

Steering type	Electromechanical with Servtronic® speed sensitive rack and pinion
Turning diameter, curb-to-curb	39.0 ft
Steering ratio	16.1:1

## Suspension

Front axle	Five-link front suspension
Rear axle	Trapezoidal-link rear suspension



# Technical Specifications

(2/2)

---

## Brake system

Front brakes	14.0 (ventilated disc) in
Rear brakes	13.0 (ventilated disc) in
Parking brake	Electromechanical

---

## Body

Material	Aluminum exterior body panels and a steel chassis
----------	---

---

## Warranty | Maintenance

Warranty	4-year/50,000-mile new vehicle limited warranty
Maintenance	12-month/10,000-mile (whichever comes first) NO CHARGE first schedules maintenance

---

## Exterior Measurements

Height	57.8 in
Overall width without mirrors	73.8 in
Length	194.2 in
Wheelbase	114.6 in
Drag coefficient	0.28 Cw
Overall width with mirrors	82.1 in
Track rear	63.7 in
Track front	64.1 in
Curb weight	4,144 lb

---

## Interior measurements

Seating capacity	5
Shoulder room, rear	56.3 in
Leg room, rear	37.4 in
Shoulder room, front	57.5 in
Head room, rear	37.8 in
Leg room, front	41.3 in
Head room, front	37.2 in
Cargo volume, rear seatbacks up/folded	14.1/NA cu ft, cu ft



# Consumption- and emission

---

## Consumption by NEDC

urban	21.0 mpg
extra-urban	29.0 mpg
combined	24.0 mpg

---





---

# Contact

Dealer  
**Audi Denver**

6060 South Broadway  
80121 Littleton

Phone: +13037951100  
FAX: 3037951160

www: <https://www.auidenver.com>



---

## Further information (Disclaimer)

Please note that although Audi Canada tries its best to avoid any pricing, fees, informational copy or image errors, there may be times where human error or omissions are encountered while developing and/or modifying the Audi Canada website. Audi Canada shall not be deemed liable or held responsible for any errors, omissions or any related issues to the information provided and contained on Audi.ca or external site linked to Audi.ca. The laws and courts of Ontario shall govern any issues related to Audi.ca, or external site linked to Audi.ca. All of the information contained in this site is for information purposes only and in no way constitutes an advertisement or an offer to buy or sell Audi vehicles. Manufacturer's Suggested Retail Price is for the Audi model selected (current model year available and in-market). Freight and PDI, license, insurance, registration, any dealer or other charges, options and taxes are not included. Actual prices are set by the dealer. This site shall not be used or relied upon by you as a substitute for information that is available to you from an authorized Audi dealer