

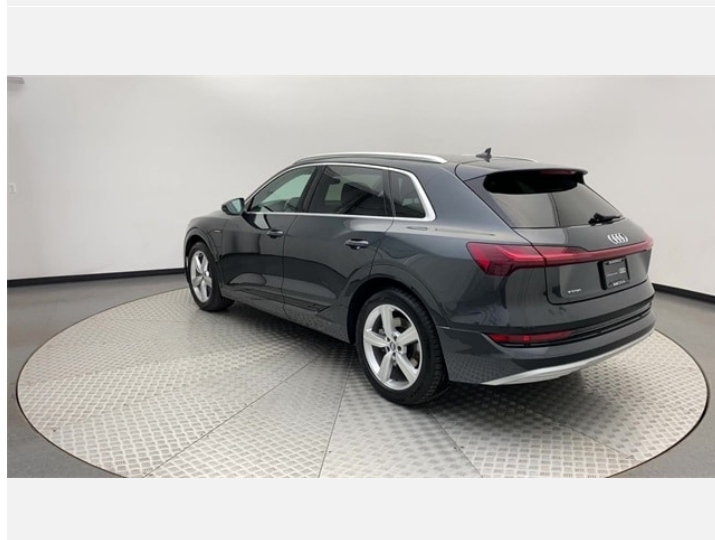
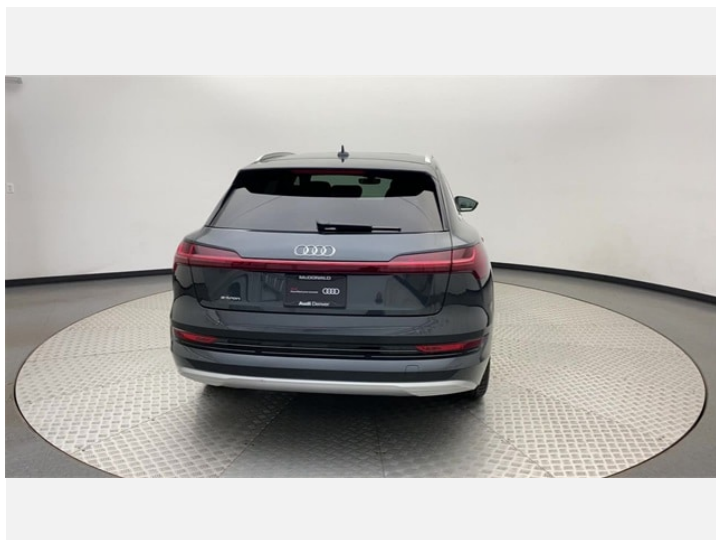
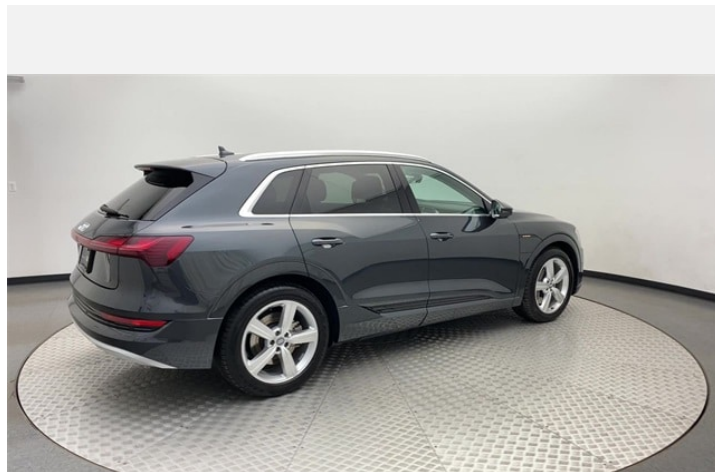


2019 Audi e-tron

Premium Plus 55 quattro® S tronic

Price as built : \$53,649

 Audi Certified pre-owned



Audi Code

ADHLFZ2K

www.audiusa.com/ADHLFZ2K



Summary

Audi 2019 Audi e-tron
Premium Plus 55 quattro® S tronic

Price as built
\$53,649

Exterior colour

Interior colour

Technical Specifications

Engine type	Dual asynchronous electric motors
Displacement/Bore and stroke	0 ccm
Max. output	265 kW
Torque	414 lb-ft and up-to 490 lb-ft with boost engaged lb-ft@rpm
Top track speed	124 mph mph
Acceleration (0 - 60 mph)	5.5 seconds (with boost engaged) seconds
Fuel grade	Electric



Further Information

Type of vehicle	Used car
Mileage	13,175 miles

Warranty No

Audi Code
ADHLFZ2K

Your configuration on www.audiusa.com
www.audiusa.com/ADHLFZ2K

Commission number
d7fb163b0a0e0adf1b39



Dealer remarks

Audi Certified Pre-Owned-- FACTORY WARRANTY FOR 5 YEARS FROM ORIGINAL SALE DATE WITH UNLIMITED MILES!! CLEAN CARFAX ONE OWNER! ONLY 13K MILES! ** DRIVER ASSISTANCE PLUS PACKAGE * ADAPTIVE CRUISE w/ TRAFFIC JAM ASIST * ACTIVE LANE ASSIST * COLD WEATHER PACKAGE * HEATED FRONT AND REAR SEATS ** CERTIFIED!

. 2019 Audi e-tron Premium Plus quattro Adaptive Windscreen Wipers, Additional High-Voltage Heater, Audi Active Lane Assist w/Emergency Assist, Audi Adaptive Cruise Control Assist, Audi Pre Sense 360, Cold Weather Package, Driver Assistance Plus Package, Heated Rear Outboard Seats, Traffic Sign Recognition.

Audi Denver is the area's premier luxury automobile dealership specializing in new Audi vehicles and Pre-Owned vehicles of all makes. Our vehicles are all inspected, and reconditioned to our high standard. Please contact a sales specialist today at 303-376-4730.



Technical Specifications

(1/2)

Engineering | Performance

Engine type	Dual asynchronous electric motors
Acceleration (0 - 60 mph)	5.5 seconds (with boost engaged) seconds
Power Level	55
Max. output	265 kW
Max. output HP	360 BHP
Towing capacity	4,000 lb
Displacement/Bore and stroke	0 ccm
Max. output KW	265 kW
Top track speed	124 mph mph
Torque	414 lb-ft and up-to 490 lb-ft with boost engaged lb-ft@rpm

Electric motor - front

Torque with boost	309 (228) lb-ft@rpm
Configuration	Axially Parallel, Asynchronous Motor

Electric motor - rear

Total system torque with boost Nm	664 (490) lb-ft
Configuration	Coaxial, Asynchronous Motor
Torque Nm	355 (262) lb-ft

Battery

Charging on 0-80% on DC 150 kW	About 30 minutes minutes
Number of cells	432
Charging Port Location	Driver's side front fender
Charging 0-100% on AC 9.6 kW	About 9 hours hours

Electrical system

Battery	380A / 68Ah
---------	-------------

Transmission | Drivetrain

Transmission	quattro® all-wheel drive
Layout	quattro®
Transmission	S tronic

Steering

Steering type	Electromechanical steering with speed-sensitive power assist
Turning diameter, curb-to-curb	40.0 ft
Steering ratio	15.9:1

Suspension

Front axle	Five-link front air suspension
Rear axle	Five-link rear air suspension



Technical Specifications

(2/2)

Brakes

Front brakes	15.7 in
Rear brakes	13.8 in
Parking brake	Electromechanical parking brake
Brakes system	Dual-circuit brake system with disc brakes front and rear

Body

Material	Steel-aluminum mix
----------	--------------------

Warranty | Maintenance

Warranty	4 years / 50k miles
Audi battery warranty	8 years / 100k miles

Exterior Measurements

Height	65.5 in
Overall width without mirrors	76.3 in
Length	193.0 in
Wheelbase	115.3 in
Drag coefficient	0.30 Cw
Overall width with mirrors	86.3 in
Track rear	65.2 in
Track front	65.2 in
Ground clearance, loaded	6.9 in

Interior measurements

Seating capacity	5
Shoulder room, rear	57.2 in
Head room with front sunroof	39.8 in
Leg room, rear	39.1 in
Shoulder room, front	58.6 in
Head room with rear sunroof	38.6 in
Head room, rear	39.5 in
Leg room, front	40.8 in
Head room, front	41.2 in
Cargo volume, rear seatbacks up/folded	28.5/57.0 cu ft, cu ft



Contact

Dealer
Audi Denver

6060 South Broadway
80121 Littleton

Phone: +13037951100
FAX: 3037951160

www: <https://www.audidenver.com>



Further information (Disclaimer)

Please note that although Audi Canada tries its best to avoid any pricing, fees, informational copy or image errors, there may be times where human error or omissions are encountered while developing and/or modifying the Audi Canada website. Audi Canada shall not be deemed liable or held responsible for any errors, omissions or any related issues to the information provided and contained on Audi.ca or external site linked to Audi.ca. The laws and courts of Ontario shall govern any issues related to Audi.ca, or external site linked to Audi.ca. All of the information contained in this site is for information purposes only and in no way constitutes an advertisement or an offer to buy or sell Audi vehicles. Manufacturer's Suggested Retail Price is for the Audi model selected (current model year available and in-market). Freight and PDI, license, insurance, registration, any dealer or other charges, options and taxes are not included. Actual prices are set by the dealer. This site shall not be used or relied upon by you as a substitute for information that is available to you from an authorized Audi dealer