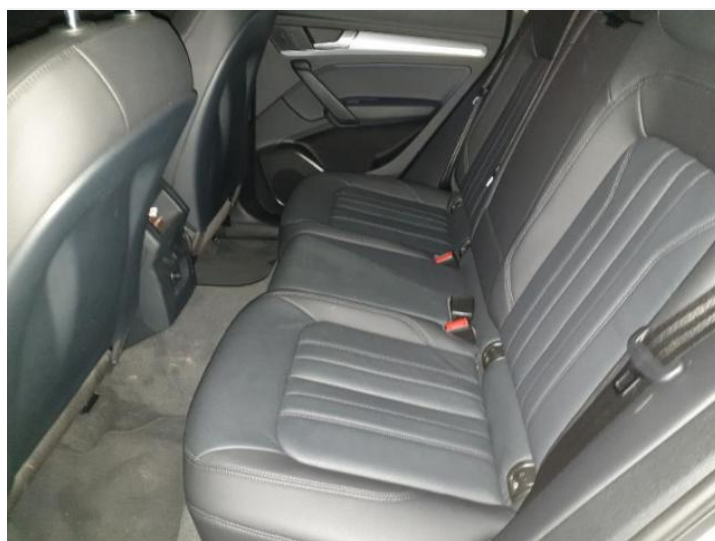
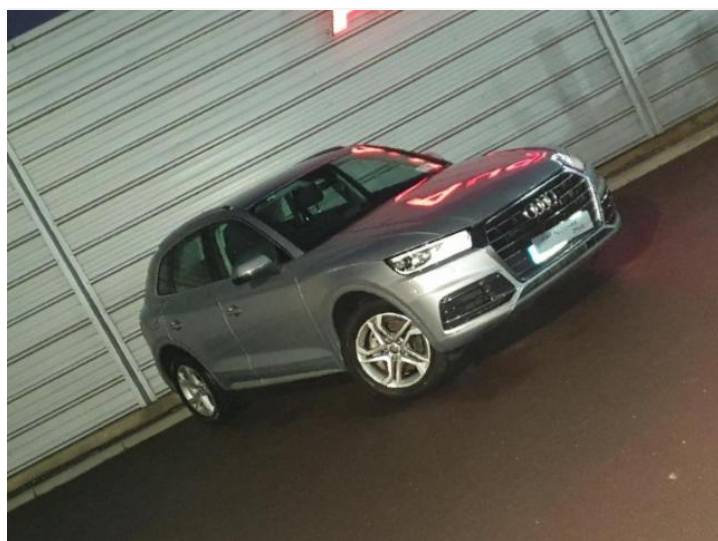




Audi Q5

SE 35 TDI quattro 163 PS S tronic

Total price¹: € 49,995.00



Audi Code

AE5A831S

www.audi.ie/AE5A831S



Summary

Audi Audi Q5

SE 35 TDI quattro 163 PS S tronic

Total price¹

€ 49,995.00

Exterior colour

Floret silver, metallic

Interior colour

| | |
|-----------|---------------|
| Seats | Black |
| Dashboard | Black |
| Carpet | Black |
| Headliner | Titanium grey |

Technical Data

| | |
|--------------|---------------------------|
| Displacement | 1968 ccm |
| Max. output | 120 (163)/3000-4200 |
| Max. torque | 400/1750 - 2750 Nm/min -1 |
| Top speed | 211 km/h |
| Acceleration | 9,1 seconds |
| Fuel type | Diesel |



Further Information

| | |
|--------------------|-------------|
| Type of vehicle | Used car |
| First registration | 30-Jul-2019 |
| Mileage | 17,000 km |
| Previous owner | 1 |

Warranty

No

Audi Code
AE5A831S

Your configuration on www.audi.ie
www.audi.ie/AE5A831S

Commission number
24519345

Standard equipment

(1/3)

Paints

VJ1 Full paint finish

Wheels & tyres

40R 18" x 8.0J '5-twin-spoke dynamic' design alloy wheels with 235/60 R18 tyres

HX0 235/60 R18 tyres

1PD Anti-theft wheel bolts

1S2 Tool kit

7K1 Tyre pressure loss indicator

1G8 Tyre Mobility system

Headlights

8IH Xenon headlights with LED daytime running lights

8Q3 Automatic headlight adjustment

8SK Rear lights

8X0 Without headlight washer system

Exterior

6FA Door mirror housing - Body coloured

2Z8 Type sign and company logo

3S3 Dulled aluminum roof rails

5J1 Rear spoiler

Roof systems & windows

5XK Sun visors including vanity mirrors

Roof systems & windows

4KC Side and rear windows with heat-insulating glass

4GF Windscreen with acoustic glazing

Seats

Q1A Standard seats

5ZF Front head restraints

3G4 Child seat anchor in front

7P1 4-way electric lumbar support

3L3 Manual seat adjustment

4A3 Heated front seats

3B3 Child seat anchor

3NT Split-folding rear seat bench

Interior

7HA Without leather pack

6NJ Cloth headlining

5MF Inlays - Aluminium satellite

7M1 Door sill trims with aluminium inlay

0TD Front and rear floor mats

Seats & seat upholstery

N1F Leather



Standard equipment

(2/3)

Steering wheel elements & controls

| | |
|-----|--|
| 1XW | 3-spoke multifunction leather steering wheel (and paddles for automatic transmissions) |
| 7F9 | Leather gear lever |

Light packages

| | |
|-----|----------------------------|
| QQ1 | LED Interior Lighting Pack |
|-----|----------------------------|

Comfort

| | |
|-----|--|
| 6XE | Door mirrors - electrically folding |
| 5SJ | Left exterior mirror |
| 6TS | Right exterior mirror: aspherical |
| 4L6 | Auto-dimming rear-view mirror |
| 9AK | Comfort automatic air conditioning |
| 7E6 | Electric auxiliary air heater |
| 7AA | Electronic vehicle immobilisation device |
| 4H5 | Electrically operated child lock |
| 4E7 | Power-operated tailgate |
| 4I7 | Keyless-Go |
| 4M3 | Cupholders |
| 6SS | Luggage compartment mat |
| 3GD | Removable luggage compartment floor |

Audio & communication

| | |
|-----|--|
| 9S7 | Driver's Information System with 7" colour display |
| 7UF | MMI Navigation System |

Audio & communication

| | |
|-----|--|
| I8S | MMI Radio Plus with 7" colour MMI screen and MMI controller |
| UI2 | Audi Smartphone Interface |
| 9VD | Audi Sound System |
| IT2 | Audi Connect Infotainment Services, 3-month trial (embedded SIM) |
| IV0 | Without Connect Plus |
| IW3 | Audi Connect Safety and Service (e-call) |
| EL3 | Audi Connect Infotainment Services, 3 month trial |
| 9ZX | Bluetooth phone connection |

Assistance systems

| | |
|-----|--|
| 6K9 | Audi Pre-sense City |
| 7X2 | Parking system plus, front and rear |
| UH2 | Hill hold assist |
| 8T6 | Cruise control system plus speed limiter |
| QK1 | Camera for driver assistance systems (required for Pre-sense City) |

Safety & technology

| | |
|-----|-----------------------------------|
| 1KF | Disk brakes in rear |
| 1LG | Disk brakes in front |
| 2H9 | Audi Drive Select |
| 1BA | Comfort Dynamic suspension |
| GH4 | quattro on-demand |
| 4UF | Driver and front passenger airbag |
| 4X3 | 6-airbag system |



Standard equipment

(3/3)

Safety & technology

| | |
|-----|--|
| FK1 | AdBlue tank, 12 litres |
| 9P6 | Seat belt monitoring |
| 7L8 | Start-Stop function with energy recuperation |
| 1T3 | First aid kit with warning triangle |



Technical Data

Engine

| | |
|----------------|---------------------------|
| Displacement | 1968 ccm |
| Power Level | 35 |
| Max. output | 120 (163)/3000-4200 |
| Max. output ps | 163 PS |
| Max. output KW | 120 kW |
| Max. torque | 400/1750 - 2750 Nm/min -1 |

Weights

| | |
|-----------------------------------|-----------|
| Unladen weight | 1901 kg |
| Roof load limit/nose weight limit | 75/100 kg |

Trailer weight limit

| | |
|--------------------------------------|---------|
| Trailer weight limit unbraked | 750 kg |
| Trailer weight limit at 12% gradient | 2400 kg |

Volumes

| | |
|------------------------------|------------|
| Luggage compartment capacity | 550 litres |
| Tank capacity | 65 litres |

Performance data

| | |
|--------------|-------------|
| Top speed | 211 km/h |
| Acceleration | 9,1 seconds |

Efficiency

| | |
|------------------|---|
| Efficiency class | A |
|------------------|---|

Insurance classes

| | |
|----------------------------------|----|
| Liability insurance class | 16 |
| Comprehensive insurance class | 23 |
| Partial coverage insurance class | 24 |



Consumption- and emission

Consumption by NEDC ²

| | |
|---|-------------|
| Diesel consumption urban ² | 6.0 l/100km |
| Diesel consumption extra urban ² | 5.2 l/100km |
| Diesel consumption combined ² | 5.5 l/100km |

| | |
|--|----------|
| CO ₂ -emissions combined ² | 144 g/km |
|--|----------|

Consumption by WLTP ²

| | |
|-------------------------|-------------|
| low ² | 8.6 l/100km |
| medium ² | 7.3 l/100km |
| high ² | 6.4 l/100km |
| extra-high ² | 7.4 l/100km |
| combined ² | 7.2 l/100km |

| | |
|--|----------|
| CO ₂ -Emissions combined ² | 190 g/km |
|--|----------|

| | |
|---------------------|--------------|
| Emission Categories | Euro 6d-Temp |
|---------------------|--------------|



Contact

Dealer
Audi Cork

Bandon Road Roundabout
T12 P903 Cork

Phone: +353 (21) 491 8400
FAX: +353 (21) 491 8499

www: <https://www.audicork.ie/>
email: info@audicork.ie



Further information (Disclaimer)

¹ Price Footnote

² consumption-emission-footnote

Audi Ireland takes great care to ensure all product and pricing information featured on audi.ie is accurate and up-to-date. However, the product specifications contained on audi.ie are for information purposes only, as Audi products are continually updated and Audi Ireland reserves the right to change the product specifications and pricing information at any time without notice. Therefore, all product specifications should be confirmed with an authorised Audi Ireland dealer. If you require specific information, you should contact an authorised Audi Ireland dealer. Images and photographs on audi.ie are for guidance only and do not necessarily illustrate the Ireland specifications of the vehicles or any other products. All quoted pricing information is ex - works and does not include delivery related charges.

Prices as of 1st September 2015 incl VAT and VRT.