



2021 Audi Q5

Premium 45 TFSI® quattro® S tronic®

Price as built : \$44,320



304-746-0500



304-746-0500



304-746-0500



304-746-0500

Audi Code

AEXLFHWG

www.audiusa.com/AEXLFHWG



Summary

Audi 2021 Audi Q5
Premium 45 TFSI® quattro® S tronic®

Price as built
\$44,320

Exterior colour

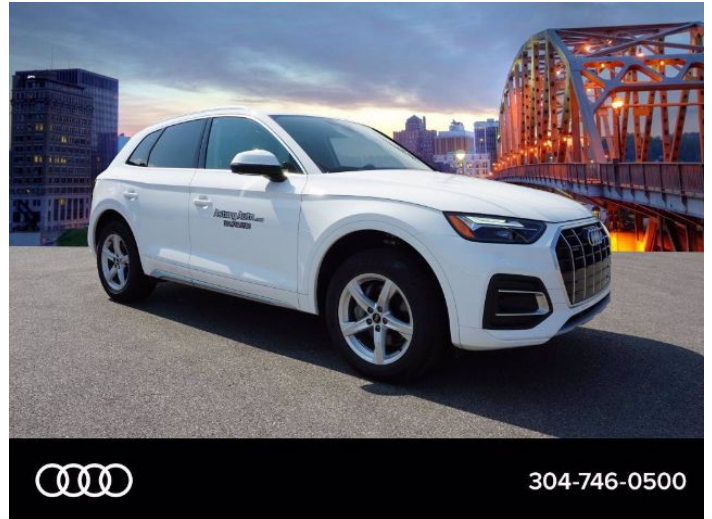
Glacier White metallic

Interior colour

| | |
|-----------|---|
| Seats | Atlas Beige with Granite Gray stitching |
| Dashboard | Black-Atlas Beige |
| Carpet | Black |
| Headliner | Beige |

Technical Specifications

| | |
|------------------------------|-------------------------|
| Engine type | 2.0-liter four-cylinder |
| Displacement/Bore and stroke | 1,984/82.5 x 92.8 cc/mm |
| Max. output | 261 HP |
| Torque | 273 lb-ft@rpm |
| Top track speed | 130 mph ¹ |
| Acceleration (0 - 60 mph) | 5.7 seconds |
| Recommended fuel | Premium |



Further Information

| | |
|-----------------|-------------|
| Type of vehicle | Used car |
| Mileage | 9,415 miles |

Warranty No

Audi Code
AEXLFHWG

Your configuration on www.audiusa.com
www.audiusa.com/AEXLFHWG

Commission number
e8df7a180a0e09a86a94

Equipment

Glacier White metallic

Audi advanced key-keyless start, stop and entry

Power-adjustable, auto-dimming, power-folding, heated exterior side mirrors with memory



19" 5-double-arm design wheels, bi-color finish, with all-season tires



Convenience package



Power panoramic sunroof



SiriusXM® with 90-day All Access trial subscription





Standard features

(1/2)

Safety and Security

| | |
|-----|--|
| 4UB | Driver and front passenger airbags |
| UH1 | Electromechanical parking brake |
| 8T2 | Cruise control system |
| VC2 | Garage door opener (Homelink®) |
| 4H5 | Electronic rear child door locks |
| QZ7 | Speed-sensitive electromechanical power steering system |
| 7K6 | Tire-pressure monitoring system |
| 4X3 | Advanced Airbag Protection System |
| 3B7 | Lower Anchors and Tethers for Children (LATCH) in rear seats |

Exterior

| | |
|-----|---|
| 1D8 | Trailer hitch provision |
| 1S1 | Tool kit and floor jack |
| 1BA | Standard suspension |
| 3S1 | Aluminum roof rails |
| 5J1 | Tailgate roof spoiler |
| 8IT | Full LED headlights with DRL signature |
| HN2 | 235/55 R19 all-season tires |
| 8VM | LED taillights with dynamic turn signal |
| VJ1 | Full paint finish |
| 4KC | Heat-insulating side and rear windows |
| 4ZB | Aluminum trim around exterior windows |

Interior

| | |
|-----|-----------------|
| QE1 | Storage package |
|-----|-----------------|

Interior

| | |
|-----|---|
| 4M3 | Four beverage holders |
| 7M1 | Aluminum front door sill inlays |
| 6NJ | Light cloth headliner |
| 9AQ | Three-zone automatic climate control system |
| 4L7 | Auto-dimming interior rear view mirror with digital compass and Integrated Toll Module® |
| QQ1 | LED interior lighting package |
| 6E3 | Front center armrest |
| 7F9 | Leather-wrapped gear selector |
| 4E7 | Power tailgate |
| 5XF | Driver and front-passenger extendable sun visors with illuminated vanity mirrors |
| 3NS | Sliding, split folding 40/20/40 rear seatbacks with adjustable recline |
| N1P | Leather seat covers |
| 4A3 | Heated front seats |
| 5MP | Brown Walnut Wood inlays |

Infotainment and Driver Assistance

| | |
|-----|---|
| 6K9 | Audi pre sense® city |
| 2H1 | Audi drive select |
| IU1 | Audi smartphone interface |
| IW3 | Audi connect® CARE assistance and security services (limited time subscription) |
| 7X2 | Parking system plus |
| 7W3 | Audi pre sense® basic and rear |
| KA2 | Rear view camera |
| 8G1 | High beam assist |



Standard features

(2/2)

Infotainment and Driver Assistance

| | |
|-----|---|
| 9VD | Audi sound system |
| 9S7 | 7.0" color driver information system |
| 7Y1 | Audi side assist |
| 6I3 | Audi active lane assist |
| 9ZX | Preparation for mobile phone (Bluetooth®) with streaming audio |



Dealer remarks

Looking for an amazing value? You won't want to miss this excellent value!

A great vehicle and a great value! Turbocharger technology provides forced air induction, enhancing performance while preserving fuel economy. With less than 10,000 miles on the odometer, this 4 door sport utility vehicle prioritizes comfort, safety and convenience. It includes leather upholstery, an automatic dimming rear-view mirror, rear wipers, and power front seats. Under the hood you'll find a 4 cylinder engine with more than 200 horsepower, and for added security, dynamic Stability Control supplements the drivetrain.

We pride ourselves in the quality that we offer on all of our vehicles. Please don't hesitate to give us a call.



Technical Specifications

(1/2)

Engineering | Performance

| | |
|------------------------------|--|
| Engine type | 2.0-liter four-cylinder |
| Engine block | Cast-iron |
| Induction/fuel injection | Turbocharged/TFSI® |
| Displacement | 2.0 l |
| Cylinder head | Aluminum-alloy |
| Towing capacity | 4,400 lb |
| Displacement/Bore and stroke | 1,984/82.5 x 92.8 cc/mm |
| Valvetrain | 16-valve DOHC with Audi valvelift system and variable valve timing |

power

| | |
|------------------------------|-------------------------|
| Power Level | 45 |
| Max. output | 261 HP |
| Displacement/Bore and stroke | 1,984/82.5 x 92.8 cc/mm |
| Torque | 273 lb-ft@rpm |

Transmission | Drivetrain

| | |
|-----------------|--|
| Drivetrain type | quattro® all-wheel drive with ultra® technology |
| Transmission | Seven-speed S tronic® dual-clutch automatic transmission |

chassis

| | |
|------------|--|
| Front axle | Five-link suspension - Audi comfort suspension |
| Rear axle | Five-link suspension - Audi comfort suspension |

Brakes

| | |
|--------------|---------------------------|
| Front brakes | 13.3 (ventilated disc) in |
| Rear brakes | 13.0 (ventilated disc) in |

Steering

| | |
|--------------------------------|---|
| Steering type | Electromechanical progressive steering system |
| Turning diameter, curb-to-curb | 38.7 ft |
| Steering ratio | 15.9:1 |

Volumes

| | |
|--|---|
| Cargo volume, rear seatbacks up/folded | 25.8/54.0 (25.6/53.5 with sunroof) cu ft, cu ft |
| Fuel ² | 18.5 gal |

Performance data

| | |
|------------------------------|-------------|
| Acceleration (0 - 60 mph) | 5.7 seconds |
| Top track speed ¹ | 130 mph |

Electrical system

| | |
|---------------|--|
| Hybrid engine | 12-volt Mild Hybrid Electric Vehicle (MHEV) technology |
|---------------|--|

Body

| | |
|----------|---|
| Material | Lightweight technology—multi-material construction (steel and aluminum) |
|----------|---|



Technical Specifications

(2/2)

Warranty | Maintenance

| | |
|----------|--|
| Warranty | 4-year/50,000-mile Audi New Vehicle Limited Warranty |
|----------|--|

Exterior Measurements

| | |
|-------------------------------|----------|
| Height | 65.5 in |
| Overall width without mirrors | 74.5 in |
| Length | 184.3 in |
| Wheelbase | 111.0 in |
| Overall width with mirrors | 84.2 in |
| Track rear | 63.3 in |
| Track front | 63.6 in |
| Curb weight | 4,079 lb |

Interior measurements

| | |
|------------------------------|---------|
| Seating capacity | 5 |
| Shoulder room, rear | 56.5 in |
| Head room with front sunroof | 38.1 in |
| Leg room, rear | 38.0 in |
| Shoulder room, front | 57.7 in |
| Head room with rear sunroof | 37.7 in |
| Head room, rear | 39.3 in |
| Leg room, front | 40.9 in |
| Head room, front | 39.6 in |



Contact

Dealer

Audi Charleston

4 Dudley Farms Ln
25309 Charleston
WV

Phone: 3047460500

FAX: 1111111111

www: <https://www.audicharlestonwv.com>



Further information (Disclaimer)

¹ Top track speed electronically limited in the U.S. Always obey speed and traffic laws.

² Gasoline cars: Never drive until the tank is completely empty. The irregular supply of fuel that results from that can cause engine misfires. Uncombusted fuel will then enter the exhaust system. This can cause overheating and damage to the catalytic converter. Electric cars: Never drive the battery down to a completely empty state of charge.

Please note that although Audi Canada tries its best to avoid any pricing, fees, informational copy or image errors, there may be times where human error or omissions are encountered while developing and/or modifying the Audi Canada website. Audi Canada shall not be deemed liable or held responsible for any errors, omissions or any related issues to the information provided and contained on Audi.ca or external site linked to Audi.ca. The laws and courts of Ontario shall govern any issues related to Audi.ca, or external site linked to Audi.ca. All of the information contained in this site is for information purposes only and in no way constitutes an advertisement or an offer to buy or sell Audi vehicles. Manufacturer's Suggested Retail Price is for the Audi model selected (current model year available and in-market). Freight and PDI, license, insurance, registration, any dealer or other charges, options and taxes are not included. Actual prices are set by the dealer. This site shall not be used or relied upon by you as a substitute for information that is available to you from an authorized Audi dealer