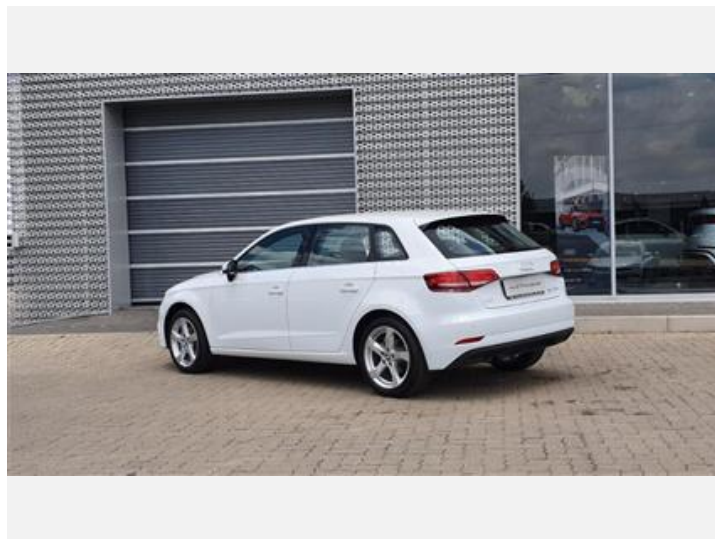
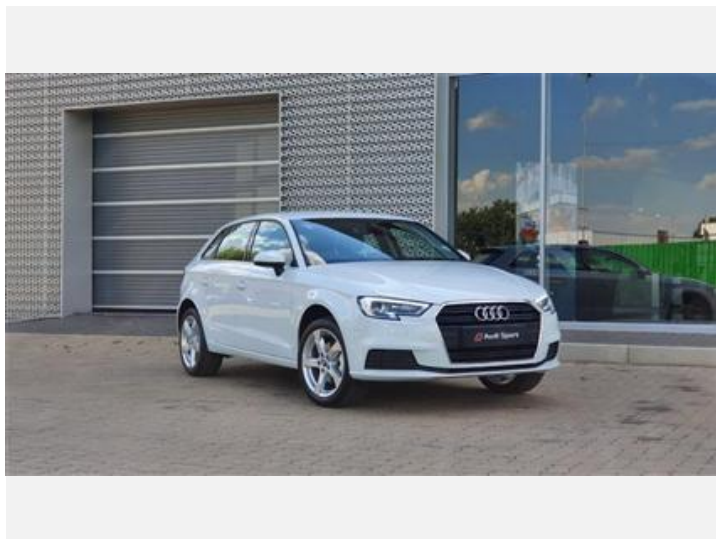




Audi A3 Sportback

30 TFSI S tronic

Total price : R 438,000



Audi Code

AF9P8KSG

www.audi.co.za/AF9P8KSG



Summary

Audi A3 Sportback
30 TFSI S tronic

Total price
R 438,000

Exterior colour

Glacier White Metallic

Interior colour

Technical Data

Displacement	999 ccm
Max. output	85kW
Max. torque	200/2000 - 3500 Nm/min -1
Top speed	206 km/h
Acceleration 0-100 km/h	9,9 s
Fuel grade	Super schwefelfrei ROZ 95



Further Information

Type of vehicle	Used car
First registration	2020
Mileage	8,740 km

Audi Freeway Plan 1 year/25000km or balance of existing

Audi Code
AF9P8KSG

Your configuration on www.audi.co.za
www.audi.co.za/AF9P8KSG

Commission number
566253

Equipment

Glacier White Metallic

Comfort automatic air conditioning system





Standard equipment

(1/3)

Equipment packages

W1G Equipment package for South Africa

Tyres

CT4 Cast alloy wheels, 5-arm style, 7.5J x 17 with 225/45 R17 tires

H8V Tires 225/45 R17 91Y

1PE Anti-theft wheel bolts

1S1 Tool kit and jack

1G9 Space-saving spare wheel, 18-inch

Headlights

8IH Xenon

8K1 Separate daytime running light

8Q2 Automatic-static headlight range control

8TB Rear fog lamps

8WF Poor weather light

8SA Rear combination lamps

8N6 Light/rain sensor

Exterior design

6FA Body-colored exterior mirror housings

5J3 RS roof spoiler

NM1 Engine cover

2JB Standard bumpers

ONA Without nameplate set (without model designation)

Exterior design

2Z8 Model designation as per new engine power designation

4ZB High-Gloss Styling package

Roof systems & glazing

3S0 Elimination of roof rails

9T1 Heated washer nozzles in front

4R4 Power windows

8M1 Rear window wiper and washer system with intermittent control

4KC Heat-insulating glass

4GH Windshield with acoustic glass

8W1 Washer fluid level indicator

Seats

Q1A Standard seats in front

3T2 Three rear head restraints

5ZF Front head restraints

3G4 ISOFIX child seat anchors for front passenger seat

6E3 Comfort center armrest in front

3L3 Front seats, manually adjustable

3B4 ISOFIX and top tether for outer rear seats

3NZ Folding rear seat backrest

UK1 Standard rear seat release

Standard equipment

(2/3)

Interior design

7HA	Without leather
6NJ	Headliner in fabric
5MA	Decorative inserts in Micrometallic Silver
0TD	Floor mats in front and rear
QJ0	Without aluminum/chrome package

Seats & seat upholstery

N5G	Fabric "Index"
-----	----------------

Steering wheels & control elements

1XW	Leather-wrapped steering wheel, 3-spoke, with multi-function Plus
7F9	Gearshift/selector lever knob

Light

QQ4	Lighting package
-----	------------------

Charging Equipment

73A	Without grid connection cable for industrial plug, for the e-tron charging system
-----	---

Comfort

6XE	Exterior mirrors, power-adjustable, heated and power-folding
5SJ	Left exterior mirror, convex
6TS	Right exterior mirror, aspherical

Comfort

4L2	Dimming interior rearview mirror
7AL	Anti-theft alarm system
4H5	Child safety lock, electrically actuated
4K4	Remote control key with SAFELOCK
5A4	Luggage compartment trim (design 1)
6SS	Luggage compartment floor mat
9JA	Non-smoker's package

Audio & communication

U5A	RS instrument cluster
9S5	Driver information system
I8E	MMI radio Plus
UE7	Audi music interface
9VD	Audi sound system
IT0	Audi connect Navigation & Infotainment (3 months)
9ZX	Bluetooth interface

Assistance systems

7X1	Rear parking aid
UH2	Hold assist
8T2	Cruise control system
7Y0	Without lane change assist

Safety & technology

0P0	Tailpipes
-----	-----------

Standard equipment

(3/3)

Safety & technology

2EJ	Disc brakes in rear, 15-inch (ECE)
1ZJ	Disc brakes in front, 15-inch (ECE)
1AS	Electronic stability control (ESC)
9U1	Brake pad wear indicator
2H6	Audi drive select
1JA	Rear shock absorption, basic version 1
G01	Shock absorption in front
6Y8	Speed limiter
1N3	Electromechanical power steering
2UA	Standard suspension system
4UP	Airbag on driver and front passenger side, knee airbag on driver/front pass. side, with front pass. airbag deactivat.
4X3	Side airbags in front and curtain airbag system
9P3	Seat belt reminder
7L6	Start/stop system



Technical Data

Engine

Power Level	30
Max. output	85kW
Max. output ps/hp	116 PS
Displacement	999 ccm
Max. output kW	85 kW
Max. torque	200/2000 - 3500 Nm/min -1

Weights

Unladen weight	1275 kg
Roof load limit/nose weight limit	75/75 kg

Trailer weight limit

at 8% gradient	1500 kg
unbraked	630 kg
at 12% gradient	1300 kg

Volumes

Luggage compartment	380 l
Fuel tank (approx.)	50 l

Performance data

Acceleration 0-100 km/h	9,9 s
Top speed	206 km/h

Efficiency

Efficiency class	A
------------------	---

Insurance

Partial coverage insurance	21
Insurance group	15
Comprehensive insurance	20

efficiency-class

Efficiency class	A
------------------	---

drive-line

Layout	Front-wheel drive
Transmission	Stronic



Consumption- and emission

Consumption by NEDC

urban	5.6 l
extra-urban	4.2 l
combined	4.7 l

CO2-emission combined	107 g/km
-----------------------	----------



Contact Details

Dealership details

Audi Centre East Rand

Cnr. Annabella & Frank Rd, Jansen Park, Boksburg
1459 Johannesburg

Phone: +27 (11) 841 3500

Fax: +27 (11) 841 3525

www: <http://www.audieastrand.co.za>

email: pdewet@um.co.za



Further information (disclaimer)

Recommended Retail Price incl VAT which is not binding. All pricing supplied on this site, together with rates quoted, are guidelines only and are subject to confirmation at the time of finalising any transactions. All information regarding the products, fees and/or costs which are included are subject to change at any time prior to a final pre-agreement quote being handed to the user. E&OE.