



# Audi Q2

30 TFSI 85 kW S tronic  
Total price: R 422,000



Audi Code

**AMROAJ5L**

[www.audi.co.za/AMROAJ5L](http://www.audi.co.za/AMROAJ5L)



# Summary

---

**Audi Q2**  
30 TFSI 85 kW S tronic

**Total price**  
R 422,000

---

**Exterior colour**  
Ara Blue Crystal

**Interior colour**



---

**Technical Data**

Displacement	999 ccm
Max. output	85 (116)/5000-5500
Max. torque	200/2000 - 3500 Nm/min -1
Top speed	197 km/h
Acceleration 0-100 km/h	10,3 s
Fuel grade	95 Octane

---

**Further Information**

Type of vehicle	Used car
First registration	2019
Mileage	14,500 km

---

**Audi Freeway Plan** 1 year/25000km or balance of existing

---

**Audi Code**  
AMROAJ5L

**Your configuration on [www.audi.co.za](http://www.audi.co.za)**  
[www.audi.co.za/AMROAJ5L](http://www.audi.co.za/AMROAJ5L)

**Commission number**  
8282

# Equipment

(1/2)

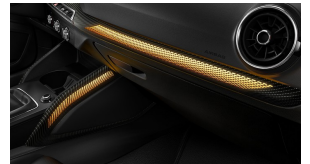
Ara Blue Crystal

Panoramic glass sunroof



Cast alloy wheels, 5-arm dynamic style, Contrast Gray, partly polished, 7J x 18 with 215/50 R18 tires

Decorative inserts, Light Graphics Format



Interior in aluminum look



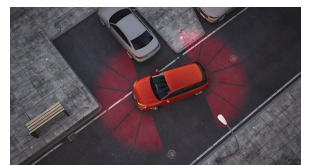
Ambient Lighting package (adjustable to different colors)

Driver information system with color display



Forward collision warning incl. autonomous emergency braking, for adaptive cruise control "high"

Park assist with parking aid plus



Adaptive cruise control (with "follow-to-stop") and speed limiter

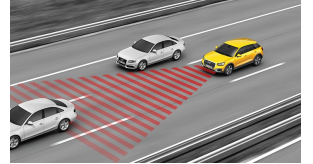


# Equipment

(2/2)

---

adaptive cruise control (Stop & Go) including pre sense front



---

Decorative insert "light graphic format" with ambient lighting package



# Standard equipment

(1/2)

---

## Tyres

1PE	Anti-theft wheel bolts
1S1	Tool kit and jack
1G5	Space-saving spare wheel

---

## Headlights

8IT	LED headlamps
8K1	Separate daytime running light
8Q3	Headlight range control
8TB	Rear fog lamps
8SP	LED rear combination lamps with dynamic turn signal
8X1	Headlamp washer system

---

## Exterior design

6FA	Body-colored exterior mirror housings
2JB	Bumpers
2Z8	Model designation as per new engine power designation
4ZE	Standard decorative trims

---

## Roof systems & glazing

8M1	Rear window wiper and washer system with intermittent control
4GH	Windshield with gray tinted sunshield
8W1	Washer fluid level indicator

---

## Seats

Q1A	Standard seats in front
3T2	Three rear head restraints
5ZF	Front head restraints
3G4	Child seat anchors in front
6E3	Center armrest in front
3L3	Front passenger seat with height adjustment
3B4	ISOFIX child seat anchors and top tether for outer rear seats
3NZ	Folding rear seat backrest
UK1	Standard rear seat release

---

## Interior design

7HA	Without leather
6NJ	Headliner in Titanium Gray fabric
7M5	Without protective film for scuff plate
0TD	Floor mats in front and rear

---

## Seats & seat upholstery

N5B	Fabric "Skript"
-----	-----------------

---

## Steering wheels & control elements

1XW	Leather-wrapped steering wheel, 3-spoke, with multi-function Plus
7F9	Gearshift/selector lever knob

# Standard equipment

(2/2)

---

## Comfort

6XC	Exterior mirrors, power-adjustable
5SJ	Left exterior mirror, convex
6TS	Right exterior mirror, aspherical
4L6	Auto-dimming interior rearview mirror, frameless
9AK	Comfort automatic air conditioning system
7AL	Anti-theft alarm system
4H5	Power-operated child safety lock
4E0	Manual luggage compartment lid
4K4	Remote control key (with SAFELOCK)
6SS	Luggage compartment floor mat
9JA	Non-smoker's package

---

## Safety & technology

1ZE	Disc brakes in front (Geomet D)
1AS	Electronic Stability Control ESC
1N7	Progressive steering
4UF	Deactivation switch for front passenger airbag
4X3	Side airbags in front and curtain airbag system
9P3	Seat belt reminder
7L6	Start/stop system with regenerative braking

---

## Audio & communication

I8E	MMI radio Plus
UE7	Audi music interface
9VD	Audi sound system
9ZX	Bluetooth interface

---

## Assistance systems

UH2	Hold assist
-----	-------------

---

## Safety & technology

OP1	Tailpipes
9U1	Brake pad wear indicator
1KE	Disc brakes in rear



# Technical Data

---

## Engine

Displacement	999 ccm
Power Level	30
Max. output	85 (116)/5000-5500
Max. output ps/hp	116 PS
Max. output kW	85 kW
Max. torque	200/2000 - 3500 Nm/min -1

---

## Weights

Unladen weight	1315 kg
Roof load limit/nose weight limit	60/75 kg

---

## Trailer weight limit

unbraked	650 kg
at 12% gradient	1300 kg
at 8% gradient	1500 kg

---

## Volumes

Luggage compartment	405 l
Fuel tank (approx.)	50 l

---

## Performance data

Top speed	197 km/h
Acceleration 0-100 km/h	10,3 s

---

## Efficiency

Efficiency class	B
------------------	---



# Consumption- and emission\*

---

## Consumption by NEDC

urban	5.9 l
extra-urban	4.7 l
combined	5.1 l

---

CO2-emission combined	121 g/km
-----------------------	----------





---

# Contact Details

Dealership details

**Audi Centre Bryanston**

Cnr William Nicol & Bryanston Drive  
2191 Johannesburg

Phone: +27 (10) 591 3000

Fax: +27 (11) 548 5060

www: <http://www.audicentrebryanston.co.za>

email: [TPANTSI@LINDSAYSAKER.CO.ZA](mailto:TPANTSI@LINDSAYSAKER.CO.ZA)

undefined



---

## Further information (disclaimer)

\* Recommended Retail Price incl VAT which is not binding. All pricing supplied on this site, together with rates quoted, are guidelines only and are subject to confirmation at the time of finalising any transactions. All information regarding the products, fees and/or costs which are included are subject to change at any time prior to a final pre-agreement quote being handed to the user. E&OE.