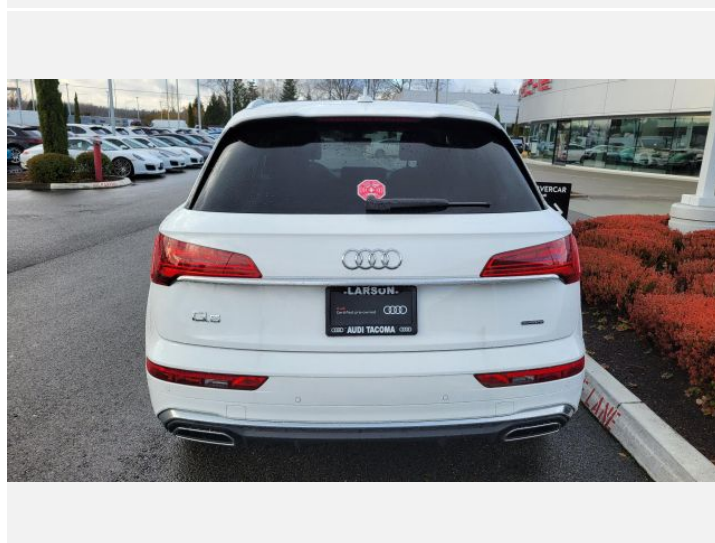
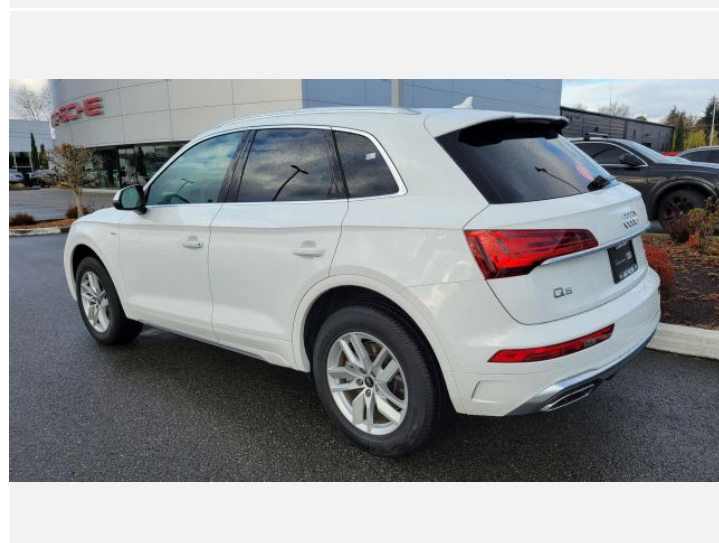
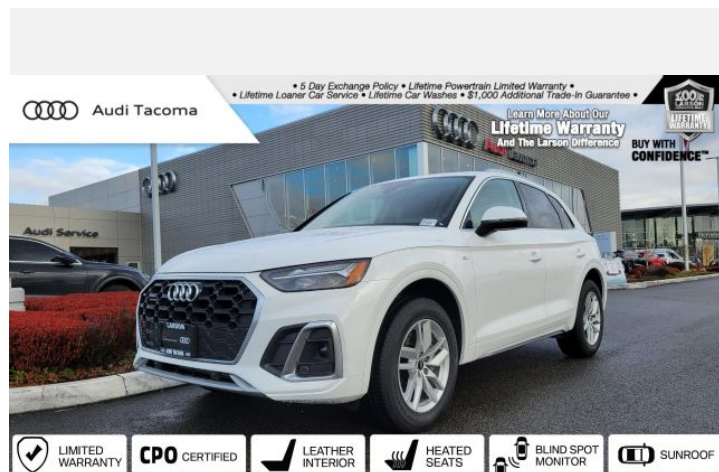




2022 Audi Q5

Premium 45 TFSI® S tronic®

Price as built : \$42,340



Audi Code

AP05F6YC

www.audiusa.com/AP05F6YC



Summary

Audi 2022 Audi Q5
Premium 45 TFSI® S tronic®

Price as built
\$42,340

Exterior colour

Ibis White

Interior colour

Seats	Black with Rock Gray stitching
Dashboard	Black
Carpet	Black
Headliner	Gray

Technical Specifications

Engine type	2.0-liter four-cylinder
Displacement	1,984/82.5 x 92.8 cc/mm
Max. output	261 HP
Max. torque	273 lb-ft@rpm
Top speed	130 mph ¹
Acceleration	5.7 seconds
Fuel type	Premium



Further Information

Type of vehicle	Used car
Mileage	6,956 miles

Warranty No

Audi Code
AP05F6YC

Your configuration on www.audiusa.com
www.audiusa.com/AP05F6YC

Commission number
3afacec30a0e0a9146ba

Equipment

Ibis White

Audi advanced key-keyless start, stop and entry

Power-adjustable, auto-dimming, power-folding, heated exterior side mirrors with memory

Convenience package

Power panoramic sunroof

SiriusXM® with 90-day All Access trial subscription





Standard features

(1/2)

Safety and Security

4UB	Driver and front passenger airbags
UH1	Electromechanical parking brake
8T2	Cruise control system
VC2	Garage door opener (Homelink®)
4H5	Electronic rear child door locks
QZ7	Speed-sensitive electromechanical power steering system
7K6	Tire-pressure monitoring system
4X3	Advanced Airbag Protection System
3B7	Lower Anchors and Tethers for Children (LATCH) in rear seats

Exterior

1D8	Trailer hitch provision
1S1	Tool kit and floor jack
1BA	Standard suspension
3S1	Aluminum roof rails
5J3	Tailgate roof spoiler
8IT	Full LED headlights with DRL signature
HX2	235/60 R18 all-season tires
8VM	LED taillights with dynamic turn signal
4KC	Heat-insulating side and rear windows
4ZB	Aluminum trim around exterior windows
CB5	18" 5-arm turbine design wheels

Interior

QE1	Storage package
-----	-----------------

Interior

4M3	Four beverage holders
VT5	Illuminated aluminum door sill inlays with S badging
6NJ	Light cloth headliner
9AQ	Three-zone automatic climate control system
4L7	Auto-dimming interior rear view mirror with digital compass and Integrated Toll Module®
QQ1	LED interior lighting package
6E3	Front center armrest
7F9	Leather-wrapped gear selector
4E7	Power tailgate
5XF	Driver and front-passenger extendable sun visors with illuminated vanity mirrors
3NS	Sliding, split folding 40/20/40 rear seatbacks with adjustable recline
N1P	Leather seat covers
4A3	Heated front seats
5MP	Brown Walnut Wood inlays

Infotainment and Driver Assistance

6K9	Audi pre sense® city
2H1	Audi drive select
IU1	Audi smartphone interface
IW3	Audi connect® CARE assistance and security services (limited time subscription)
7X2	Parking system plus
7W3	Audi pre sense® basic and rear
KA2	Rear view camera



Standard features

(2/2)

Infotainment and Driver Assistance

8G1	High beam assist
9VD	Audi sound system
9S7	7.0" color driver information system
7Y1	Audi side assist
6I3	Audi active lane assist
9ZX	Preparation for mobile phone (Bluetooth®) with streaming audio



Dealer remarks

AUDI Certified. JUST LIKE NEW, BUT, THOUSANDS LESS!! Ibis White 2022 Audi Q5 quattro 7-Speed Automatic S tronic 2.0L Turbocharged Audi Certified, Black Leather, Accident Free Carfax History, One Owner, LIKE NEW IN EVERY WAY!!, 10 Speakers, Audi Advanced Key, Auto-Dimming Power Folding Exterior Mirrors, Convenience Package, Driver Seat Memory, Front Bucket Seats, Heated front seats, Heated Steering Wheel, Panoramic Sunroof, Power Liftgate, Security system, SiriusXM All Access Service, Spoiler, Wheels: 18" 5-Arm-Star Design. GORGEOUS, LOCAL AND WELL CARED FOR. NONE FINER!!

Odometer is 659 miles below market average! 23/28 City/Highway MPG

Audi Details:

- * 125+ Point Inspection
- * Roadside Assistance for two years with unlimited miles. Certified pre-owned Limited Warranty: For all CPO sales on or after 7/1/22, if New Vehicle Limited Warranty (NVLW) coverage remains at time of CPO purchase, CPO Limited Warranty Coverage commences upon expiration of NVLW and continues for a period of two years or 50,000 miles, whichever occurs first. If NVLW coverage has expired at time of CPO purchase, CPO Limited Warranty coverage commences at time of purchase and continues for two years or 50,000 miles, whichever occurs first. CPO Limited Warranty is transferable between private parties.
- * Roadside Assistance
- * Transferable Warranty
- * Warranty Deductible: \$0
- * Vehicle History

Larson Automotive Group has been serving members of the community since 1953 and would love to make you a part of the family:

- â€¢ Free Lifetime Powertrain Warranty
- â€¢ \$1,000 Additional Trade in Guarantee
- â€¢ Lifetime Free Car Washes
- â€¢ 5 Day Exchange Policy
- â€¢ Free Loaner Car with Service.



Technical Specifications

(1/2)

Engineering | Performance

Engine type	2.0-liter four-cylinder
Power Level	45
Max. output	261 HP
Displacement	2.0 l
Towing capacity	4,400 lb
Max. torque	273 lb-ft@rpm
Valvetrain	16-valve DOHC with Audi valvelift system and variable valve timing
Acceleration	5.7 seconds
Induction/fuel injection	Turbocharged/TFSI®
Engine block	Cast-iron
Cylinder head	Aluminum-alloy
Displacement	1,984/82.5 x 92.8 cc/mm
Top speed ¹	130 mph

Exterior Measurements

Height	65.5 in
Overall width without mirrors	74.5 in
Length	184.3 in
Drag coefficient	.32 Cw
Wheelbase	111.0 in
Overall width with mirrors	84.2 in
Track rear	63.3 in
Track front	63.6 in
Curb weight	4,079 lb

Suspension

Front axle	Five-link
Rear axle	Five-link

Interior measurements

Seating capacity	5
Shoulder room, rear	56.5 in
Leg room, rear	38.0 in
Head room with front sunroof	38.1 in
Shoulder room, front	57.7 in
Head room with rear sunroof	37.7 in
Leg room, front	40.9 in
Head room, rear	39.3 in
Head room, front	39.6 in
Luggage compartment capacity	25.8/54.0 (25.6/53.5 with sunroof) cu ft, cu ft

Electrical system

Hybrid engine	12-volt Mild Hybrid Electric Vehicle (MHEV) technology
---------------	--

Transmission | Drivetrain

Drivetrain type	quattro® all-wheel drive with ultra® technology
Transmission	Seven-speed S tronic® dual-clutch automatic transmission



Technical Specifications

(2/2)

Steering

Steering type	Electromechanical progressive steering system
Turning diameter, curb-to-curb	38.7 ft
Steering ratio	15.9:1

Brakes

Front brakes	13.3 (ventilated disc) in
Rear brakes	13.0 (ventilated disc) in

Body

Material	Lightweight technology—multi-material construction (steel and aluminum)
----------	---



Contact

Dealer
Audi Tacoma

1701 Alexander Ave E Ste B
98424 Fife
WA

Phone: +12534753832
FAX: 2534754397

www: <https://www.auditacoma.com>



Further information (Disclaimer)

¹ Top track speed electronically limited in the U.S. Always obey speed and traffic laws.

Please note that although Audi Canada tries its best to avoid any pricing, fees, informational copy or image errors, there may be times where human error or omissions are encountered while developing and/or modifying the Audi Canada website. Audi Canada shall not be deemed liable or held responsible for any errors, omissions or any related issues to the information provided and contained on Audi.ca or external site linked to Audi.ca. The laws and courts of Ontario shall govern any issues related to Audi.ca, or external site linked to Audi.ca. All of the information contained in this site is for information purposes only and in no way constitutes an advertisement or an offer to buy or sell Audi vehicles. Manufacturer's Suggested Retail Price is for the Audi model selected (current model year available and in-market). Freight and PDI, license, insurance, registration, any dealer or other charges, options and taxes are not included. Actual prices are set by the dealer. This site shall not be used or relied upon by you as a substitute for information that is available to you from an authorized Audi dealer