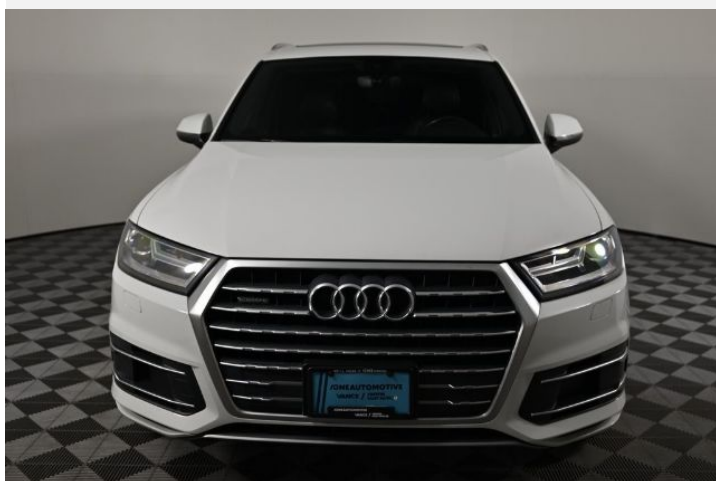
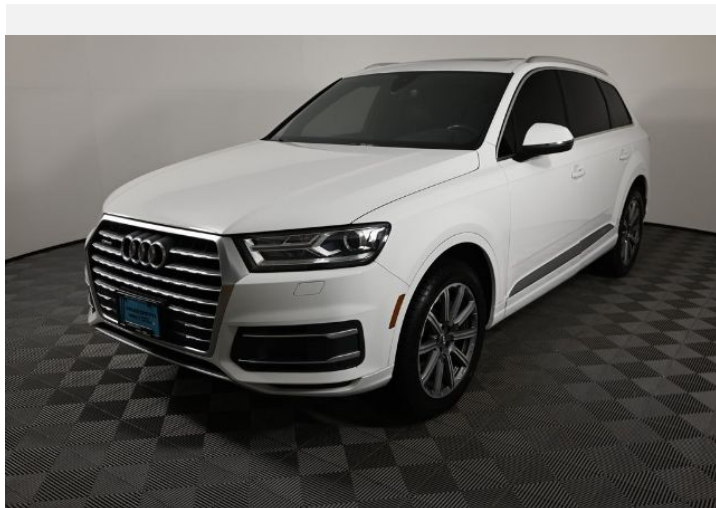




# 2018 Audi Q7

Premium 2.0 TFSI quattro® all-wheel drive

Price as built : \$29,992



Audi Code

**AQ2QNAEK**

[www.audiusa.com/AQ2QNAEK](http://www.audiusa.com/AQ2QNAEK)





# Summary

**Audi 2018 Audi Q7**  
Premium 2.0 TFSI quattro® all-wheel drive

**Price as built**  
\$29,992

## Exterior colour

Carrara White

## Interior colour

Seats	Black
Dashboard	Black
Carpet	Black
Headliner	Lunar Silver

## Technical Specifications

Engine type	Four-cylinder
Displacement/Bore and stroke	1984/82.5 x 92.8 cc/mm
Torque	273 @ 1,600-4,500 lb-ft@rpm
Acceleration (0 - 60 mph)	7.1 seconds seconds
Recommended fuel	Premium



## Further Information

Type of vehicle	Used car
Mileage	61,468 miles

**Warranty** No

**Audi Code**  
AQ2QNAEK

**Your configuration on [www.audiusa.com](http://www.audiusa.com)**  
[www.audiusa.com/AQ2QNAEK](http://www.audiusa.com/AQ2QNAEK)

**Commission number**  
841bb52a0a0e0a925801

# Equipment

---

Carrara White

---

20" 10-spoke-star design Bi-color wheels

---



Black cloth headliner

---



Audi connect CARE assistance and security services

---



MMI® Navigation plus with Audi smartphone interface including Apple CarPlay® and Google™ Android Auto™

---



Audi connect CARE assistance and security services and six-month trial subscription to Audi connect PRIME and Audi connect PLUS online services

---



MMI® Radio plus with ten speakers and single CD player with MP3 playback capability





# Standard features

(1/2)

## Safety and Security

4UB	Driver and front-passenger advanced airbags
UH1	Electromechanical parking brake
8T2	Cruise control with coast, resume and accelerate features
VC2	Garage door opener (HomeLink®)
QZ7	Electromechanical power steering
7K6	Tire-pressure monitoring system
4X3	Front thorax side airbags and Sideguard® head curtain airbags
4F6	Audi advanced key-keyless start, stop and entry
3B3	Lower Anchors and Tethers for Children (LATCH) in rear seats

## Exterior

1D8	Provision for towing bracket
6XF	Power-adjustable, power-folding, heated exterior side mirrors with memory
1BA	Dynamic suspension system
3S1	Aluminum roof rails
5J1	Tailgate roof spoiler
0N1	Standard rear axle
8IH	Xenon plus headlights with LED daytime running lights
8Q3	Automatic headlights
H93	20" 285/45 run-flat all-season tires
4KF	Rear privacy glass
4ZB	Aluminum trim around exterior windows

## Interior

QJ1	Chrome package
3FU	Panoramic sunroof
7M1	Aluminum door sill inlays
KH5	Three-zone automatic climate control
4L7	Auto-dimming interior rear view mirror with digital compass
QQ0	Ambient LED interior lighting
1XW	Three-spoke multifunction steering wheel
2C5	Manual tilt and telescopic adjustable steering column
6E6	Comfort front armrest
7F9	Leather-wrapped gear selector
4E7	Power tailgate
5XL	Driver and front-passenger sun visors with illuminated vanity mirrors
5KL	Split tumble-folding 35/30/35 second-row with fore/aft adjustment and power 50/50 split folding third row
7HA	Cloth interior on doors
N1F	Leather seating surfaces
4A3	Heated front seats
5MT	Diamond Silver/Terra Brown Walnut inlays

## Infotainment and Driver Assistance

6K8	Audi pre sense® basic and Audi pre sense® city
2H1	Audi drive select
7X2	Parking system plus
7W1	Audi pre sense® basic



---

# Standard features

(2/2)

---

## Infotainment and Driver Assistance

KA2	Rear view camera
9VD	Audi sound system
9S7	7.0" color driver information system
QV3	SiriusXM® Satellite Radio
9ZX	BLUETOOTH® wireless technology preparation for compatible devices



---

## Dealer remarks

---

White 2018 Audi Q7 2.0T Premium quattro 19/25 City/Highway MPG

Awards:

\* 2018 KBB.com 10 Most Awarded Brands

At Ken Vance Motors, a division of ONE Automotive Group, every car sold is backed by a full suite of benefits. We think of it as our ONEderful Commitment to you. It starts with our ONEderful Price. Here, you get our upfront lowest price. Always. It's a refreshing approach that's free of the hassle, haggle, and anxiety you may encounter at other dealerships. Our ONEderful process puts you in the driver's seat. You drive the shopping process from online to in-store. We're here to build a relationship based on constructive conversation, not confrontation. Our ONEderful Vehicle Benefit Bundle was developed to take care of you and your vehicle well beyond your initial purchase. New vehicles include a Lifetime Powertrain Warranty. Select pre-owned vehicles include a 6 month or 6,000-mile Powertrain Warranty and our ONEbrella Guarantee, covering brake, battery and bulb replacement for 3 months or 3,000 miles. For extra peace of mind, our cars come with a seven day return or exchange policy. To make buying your vehicle easier, we'll deliver your new vehicle to you at no charge within 150 miles. With such ONEderful automotive experience it's no wonder so many people come visit us for all their automotive needs. Some restrictions apply. See dealer for details.



# Technical Specifications

(1/2)

## Engineering | Performance

Acceleration (0 - 60 mph)	7.1 seconds
Engine type	Four-cylinder
Engine block	Cast Iron
Induction/fuel injection	TFSI®/Turbocharged
Cylinder head	Aluminum-alloy
Displacement	2.0 l
Horsepower	252 @ 5,000-6,000 @ rpm
Towing capacity	4,400 lbs lb
Displacement/Bore and stroke	1984/82.5 x 92.8 cc/mm
Valvetrain	16 valve DOHC with Audi valvelift
Torque	273 @ 1,600-4,500 lb-ft@rpm

## Transmission | Drivetrain

Gear ratios: 8th	0.667: 1
Gear ratios: 6th	1.000: 1
Gear ratios: 7th	0.839: 1
Gear ratios: Reverse	3.317: 1
Drivetrain type	Tiptronic® transmission with quattro® all-wheel drive
Gear ratios: Final Drive	3.504: 1
Gear ratios: 4th	1.667: 1
Gear ratios: 5th	1.285: 1
Transmission	Eight-speed Tiptronic® transmission with quattro® all-wheel drive
Gear ratios: 2nd	3.143: 1
Gear ratios: 3rd	2.106: 1
Gear ratios: 1st	4.714: 1

## Exterior Measurements

Height	68.5 in
Overall width without mirrors	77.5 in
Length	199.6 in
Drag coefficient	0.33 Cw
Wheelbase	117.9 in
Overall width with mirrors	87.1 in
Track rear	66.6 in
Track front	66.1 in
Curb weight	4,707 lb



# Technical Specifications

(2/2)

---

## Interior measurements

Seating capacity	7
Head room with middle sunroof	38.8 in
Shoulder room, rear	49.4 in
Shoulder room, front	59.5 in
Leg room, rear	29.2 in
Head room with front sunroof	38.4 in
Head room with rear sunroof	35.9 in
Leg room, middle	38.8 in
Shoulder room, middle	58.5 in
Leg room, front	41.7 in
Cargo volume, rear seatbacks up/folded	14.8, 37.5 (3rd row folded), 71.6 (2nd and 3rd rows folded) cu ft, cu ft

---

## Steering

Steering type	Electromechanical speed-sensitive power steering
Turning diameter, curb-to-curb	40.7 ft
Steering ratio	15.8: 1

---

## Brakes

Front brakes	14.8 (ventilated disc) in
Rear brakes	13.8 (ventilated disc) in
Parking brake	Electromechanical

---

## Electrical system

Alternator	14 Volt - 120-180A
Battery	12 Volt - 380A/68Ah

---

## Warranty | Maintenance

Warranty	4-year/50,000 mile Audi New Vehicle Limited Warranty
Maintenance	12-month/10,000 mile (whichever occurs first) NO CHARGE first scheduled maintenance

---

## Suspension

Magnetic Ride	N/A
Front axle	Five-link front independent steel spring suspension
Rear axle	Five-link rear independent steel spring suspension





---

# Contact

Dealer

**Audi Eau Claire**

5201 Fairview Dr  
54701 Eau Claire  
WI

Phone: +17158301111

FAX: 7158522388

www: <https://www.audieauclaire.com>



## Further information (Disclaimer)

Please note that although Audi Canada tries its best to avoid any pricing, fees, informational copy or image errors, there may be times where human error or omissions are encountered while developing and/or modifying the Audi Canada website. Audi Canada shall not be deemed liable or held responsible for any errors, omissions or any related issues to the information provided and contained on Audi.ca or external site linked to Audi.ca. The laws and courts of Ontario shall govern any issues related to Audi.ca, or external site linked to Audi.ca. All of the information contained in this site is for information purposes only and in no way constitutes an advertisement or an offer to buy or sell Audi vehicles. Manufacturer's Suggested Retail Price is for the Audi model selected (current model year available and in-market). Freight and PDI, license, insurance, registration, any dealer or other charges, options and taxes are not included. Actual prices are set by the dealer. This site shall not be used or relied upon by you as a substitute for information that is available to you from an authorized Audi dealer