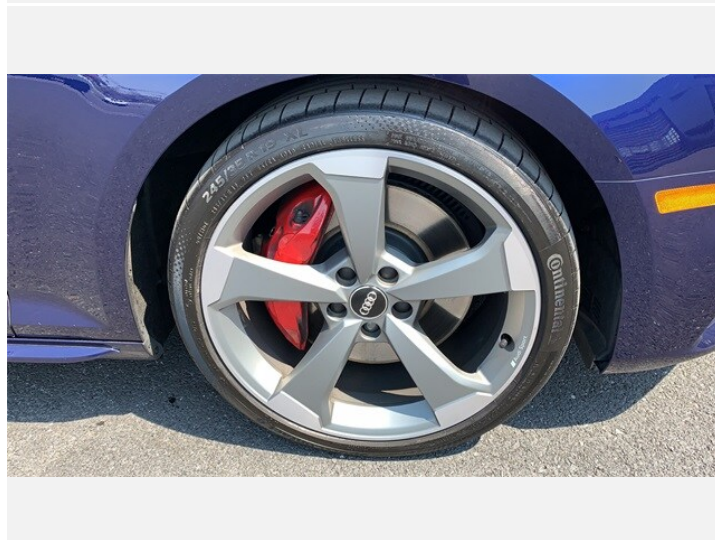
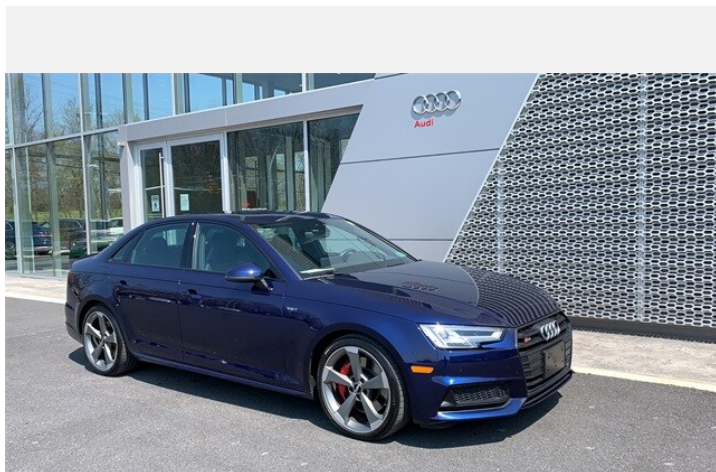




2018 Audi S4 Sedan

Premium Plus 3.0 TFSI® quattro® all-wheel drive Tiptronic®

Price as built : \$43,999



Audi Code

ASNLHRRV

www.audiusa.com/ASNLHRRV





Summary

Audi 2018 Audi S4 Sedan
Premium Plus 3.0 TFSI® quattro® all-wheel drive Tiptronic®

Price as built
\$43,999

Exterior colour

Interior colour

Technical Specifications

Engine type	Six-cylinder
Displacement/Bore and stroke	2,995/84.5 x 89.0 cc/mm
Max. output	260 kW
Torque	369 @ 1,370 - 4,500 lb-ft@rpm
Top track speed	155 mph or 130 mph with all-season tires mph
Acceleration (0 - 60 mph)	4.4 seconds seconds
Recommended fuel	Premium



Further Information

Type of vehicle	Used car
Mileage	25,522 miles

Warranty No

Audi Code
ASNLHRRV

Your configuration on www.audiusa.com
www.audiusa.com/ASNLHRRV

Commission number
14448fd40a0e0ae7148b



Dealer remarks

* 1 OWNER CLEAN CARFAX, * 1 OWNER, * CLEAN CARFAX, * NAVIGATION, * TURBO, * AWD, * MOONROOF / SUNROOF, * LEATHER, * BACKUP CAMERA, * HEATED SEATS, Audi Connect PRIME & PLUS Online Services, Audi Virtual Cockpit, Black Optic Package, Body Color Exterior Mirror Housings, Navigation Package, Radio: Audi MMI Navigation Plus w/MMI Touch, Red Brake Calipers, S Sport Package, Sport Adaptive Damping Suspension, Sports Rear Differential, Titanium Black Exterior Trim, Wheels: 19" 5-Arm Rotor Design Titanium Matte.
Recent Arrival! Odometer is 4846 miles below market average! 21/30 City/Highway MPG

Awards:

* 2018 KBB.com 10 Most Awarded Brands

For more information, please contact LeAnna Cherevka at lcherevka@sunmotorcars.com.



Technical Specifications

(1/2)

Engineering | Performance

Engine type	Six-cylinder
Acceleration (0 - 60 mph)	4.4 seconds
Max. output	260 kW
Engine block	Aluminum-alloy
Displacement	3.0 l
Cylinder head	Aluminum-alloy
Max. output ps/hp	354 @ 5,400 - 6,400 @ rpm
Displacement/Bore and stroke	2,995/84.5 x 89.0 cc/mm
Max. output KW	260 kW
Top track speed	155 mph or 130 mph with all-season tires
Torque	369 @ 1,370 - 4,500 lb-ft@rpm
Valvetrain	Audi valvelift system, DOHC, direct intercooler

Electrical system

Alternator	14 Volts - 150 amp
Battery	12 Volts - 80 amp

Transmission | Drivetrain

Gear ratios: 8th	0.667: 1
Gear ratios: 6th	1.000: 1
Gear ratios: 7th	0.839: 1
Gear ratios: Reverse	3.317: 1
Gear ratios: Final Drive	2.848: 1
Gear ratios: 4th	1.667: 1
Transmission	Eight-speed Tiptronic® automatic transmission and quattro® all-wheel drive
Gear ratios: 5th	1.285: 1
Layout	quattro®
Gear ratios: 2nd	3.143: 1
Gear ratios: 3rd	2.106: 1
Transmission	Tiptronic
Gear ratios: 1st	4.714: 1

Steering

Steering type	Electromechanical speed-sensitive power steering system
Turning diameter, curb-to-curb	38.1 ft
Steering ratio	15.9: 1

Suspension

Front axle	Five-link front independent steel spring S4 sport suspension
Rear axle	Five-link rear independent steel spring S4 sport suspension



Technical Specifications

(2/2)

Brakes

Front brakes	13.8 (ventilated disc) in
Rear brakes	13.1 (ventilated disc) in

Body

Material	Lightweight construction technology - multi-material body construction (steel and aluminum composition)
Corrosion protection	Multistep anti-corrosion protection

Warranty | Maintenance

Warranty	4-year/50,000 mile Audi New Vehicle Limited Warranty
Maintenance	12-month/10,000 mile (whichever occurs first) NO CHARGE first scheduled maintenance

Exterior Measurements

Height	55.3 in
Overall width without mirrors	72.5 in
Length	186.8 in
Wheelbase	111.2 in
Drag coefficient	0.29 Cw
Overall width with mirrors	79.6 in
Track rear	60.9 in
Track front	61.6 in
Curb weight	3,858 lb

Interior measurements

Seating capacity	5
Shoulder room, rear	54.5 in
Head room with front sunroof	38.9 in
Leg room, rear	35.7 in
Shoulder room, front	55.9 in
Head room with rear sunroof	37.4 in
Leg room, front	41.3 in
Cargo volume, rear seatbacks up/folded	13.0/NA cu ft, cu ft



Consumption- and emission

Consumption by NEDC

urban	21.0 mpg
extra-urban	30.0 mpg
combined	24.0 mpg



Contact

Dealer

Audi Mechanicsburg

6671 Carlisle Pike
17050 Mechanicsburg

Phone: +17177962834

FAX: 7177661015

www: <https://www.mechanicsburgaudipa.com>



Further information (Disclaimer)

Please note that although Audi Canada tries its best to avoid any pricing, fees, informational copy or image errors, there may be times where human error or omissions are encountered while developing and/or modifying the Audi Canada website. Audi Canada shall not be deemed liable or held responsible for any errors, omissions or any related issues to the information provided and contained on Audi.ca or external site linked to Audi.ca. The laws and courts of Ontario shall govern any issues related to Audi.ca, or external site linked to Audi.ca. All of the information contained in this site is for information purposes only and in no way constitutes an advertisement or an offer to buy or sell Audi vehicles. Manufacturer's Suggested Retail Price is for the Audi model selected (current model year available and in-market). Freight and PDI, license, insurance, registration, any dealer or other charges, options and taxes are not included. Actual prices are set by the dealer. This site shall not be used or relied upon by you as a substitute for information that is available to you from an authorized Audi dealer