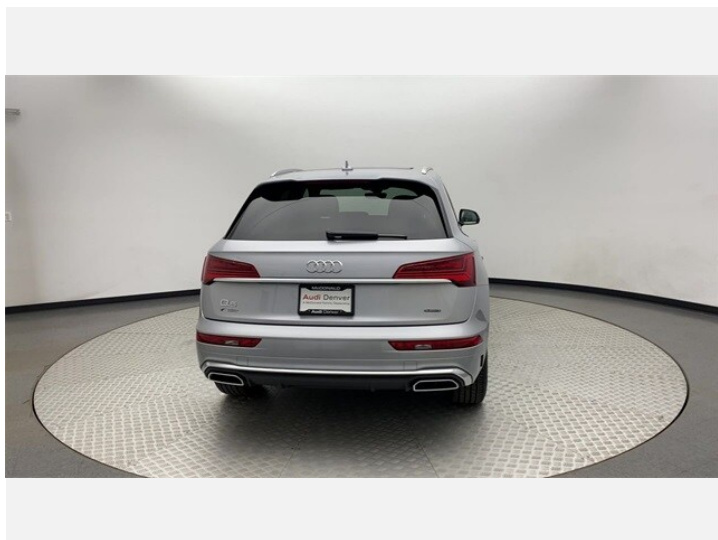
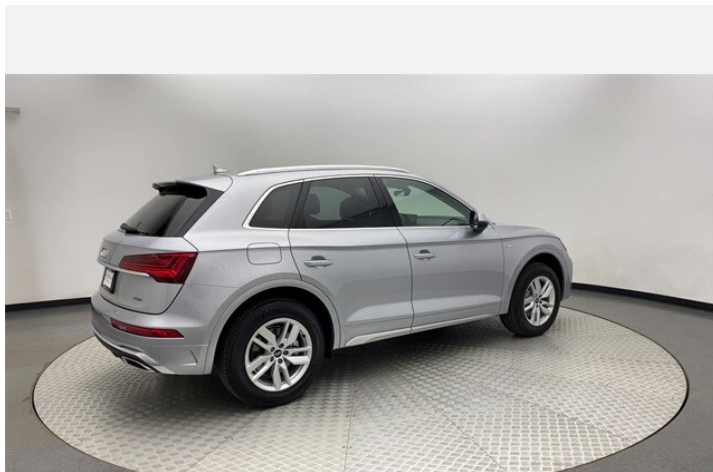




2022 Audi Q5

Premium 45 TFSI® S tronic®

Price as built : \$45,649



Audi Code

AUJ72KT6

www.audiusa.com/AUJ72KT6



Summary

Audi 2022 Audi Q5
Premium 45 TFSI® S tronic®

Price as built
\$45,649

Exterior colour

Florett Silver metallic

Interior colour

Seats	Rock Gray with Granite Gray stitching
Dashboard	Black-Rock Gray
Carpet	Black
Headliner	Gray

Technical Specifications

Engine type	2.0-liter four-cylinder
Displacement/Bore and stroke	1,984/82.5 x 92.8 cc/mm
Max. output	261 HP
Torque	273 lb-ft@rpm
Top track speed	130 mph ¹
Acceleration (0 - 60 mph)	5.7 seconds
Recommended fuel	Premium



Further Information

Type of vehicle	Used car
Mileage	5,111 miles

Warranty No

Audi Code
AUJ72KT6

Your configuration on www.audiusa.com
www.audiusa.com/AUJ72KT6

Commission number
410210070a0e0a927f92

Equipment

Florett Silver metallic

Audi advanced key-keyless start, stop and entry

Power-adjustable, auto-dimming, power-folding, heated exterior side mirrors with memory

Convenience package

Power panoramic sunroof

SiriusXM® with 90-day All Access trial subscription





Standard features

(1/2)

Interior

6E3	Front center armrest
9AQ	Three-zone automatic climate control system
4L7	Auto-dimming interior rear view mirror with digital compass and Integrated Toll Module®
QQ1	LED interior lighting package
7F9	Leather-wrapped gear selector
4E7	Power tailgate
5XF	Driver and front-passenger extendable sun visors with illuminated vanity mirrors
3NS	Sliding, split folding 40/20/40 rear seatbacks with adjustable recline
N1P	Leather seat covers
4A3	Heated front seats
5MP	Brown Walnut Wood inlays
QE1	Storage package
4M3	Four beverage holders
VT5	Illuminated aluminum door sill inlays with S badging
6NJ	Light cloth headliner

Infotainment and Driver Assistance

6K9	Audi pre sense® city
2H1	Audi drive select
IU1	Audi smartphone interface
IW3	Audi connect® CARE assistance and security services (limited time subscription)
7X2	Parking system plus
KA2	Rear view camera

Infotainment and Driver Assistance

8G1	High beam assist
9VD	Audi sound system
9S7	7.0" color driver information system
6I3	Audi active lane assist
9ZX	Preparation for mobile phone (Bluetooth®) with streaming audio

Safety and Security

4UB	Driver and front passenger airbags
UH1	Electromechanical parking brake
8T2	Cruise control system
VC2	Garage door opener (Homelink®)
4H5	Electronic rear child door locks
QZ7	Speed-sensitive electromechanical power steering system
7K6	Tire-pressure monitoring system
4X3	Advanced Airbag Protection System
3B7	Lower Anchors and Tethers for Children (LATCH) in rear seats

Exterior

1D8	Trailer hitch provision
1S1	Tool kit and floor jack
1BA	Standard suspension
3S1	Aluminum roof rails
5J3	Tailgate roof spoiler
8IT	Full LED headlights with DRL signature



Standard features

(2/2)

Exterior

HX2	235/60 R18 all-season tires
8VM	LED taillights with dynamic turn signal
4KC	Heat-insulating side and rear windows
4ZB	Aluminum trim around exterior windows
CB5	18" 5-arm turbine design wheels



Dealer remarks

CLEAN CARFAX 1-OWNER ** ALL WHEEL DRIVE ** LEATHER ** HEATED SEATS ** REAR VIEW CAMERA ** 2022 Audi Q5 Premium S Line. MECHANICALLY INSPECTED AND RECONDITIONED - CALL TODAY!

Audi Denver is the area's premier luxury automobile dealership specializing in new Audi vehicles and Pre-Owned vehicles of all makes. Our vehicles are all inspected, and reconditioned to our high standard. Please contact a sales specialist today at 303-376-4730.



Technical Specifications

(1/2)

Engineering | Performance

Engine type	2.0-liter four-cylinder
Power Level	45
Max. output	261 HP
Displacement	2.0 l
Towing capacity	4,400 lb
Torque	273 lb-ft@rpm
Valvetrain	16-valve DOHC with Audi valvelift system and variable valve timing
Acceleration (0 - 60 mph)	5.7 seconds
Induction/fuel injection	Turbocharged/TFSI®
Engine block	Cast-iron
Cylinder head	Aluminum-alloy
Displacement/Bore and stroke	1,984/82.5 x 92.8 cc/mm
Top track speed ¹	130 mph

Exterior Measurements

Height	65.5 in
Overall width without mirrors	74.5 in
Length	184.3 in
Drag coefficient	.32 Cw
Wheelbase	111.0 in
Overall width with mirrors	84.2 in
Track rear	63.3 in
Track front	63.6 in
Curb weight	4,079 lb

Suspension

Front axle	Five-link
Rear axle	Five-link

Interior measurements

Seating capacity	5
Shoulder room, rear	56.5 in
Leg room, rear	38.0 in
Head room with front sunroof	38.1 in
Shoulder room, front	57.7 in
Head room with rear sunroof	37.7 in
Leg room, front	40.9 in
Head room, rear	39.3 in
Head room, front	39.6 in
Cargo volume, rear seatbacks up/folded	25.8/54.0 (25.6/53.5 with sunroof) cu ft, cu ft

Electrical system

Hybrid engine	12-volt Mild Hybrid Electric Vehicle (MHEV) technology
---------------	--

Transmission | Drivetrain

Drivetrain type	quattro® all-wheel drive with ultra® technology
Transmission	Seven-speed S tronic® dual-clutch automatic transmission



Technical Specifications

(2/2)

Steering

Steering type	Electromechanical progressive steering system
Turning diameter, curb-to-curb	38.7 ft
Steering ratio	15.9:1

Brakes

Front brakes	13.3 (ventilated disc) in
Rear brakes	13.0 (ventilated disc) in

Body

Material	Lightweight technology—multi-material construction (steel and aluminum)
----------	---



Contact

Dealer
Audi Denver

6060 South Broadway
80121 Littleton
CO

Phone: +13037951100
FAX: 3037951160

www: <https://www.auidenver.com>



Further information (Disclaimer)

¹ Top track speed electronically limited in the U.S. Always obey speed and traffic laws.

Please note that although Audi Canada tries its best to avoid any pricing, fees, informational copy or image errors, there may be times where human error or omissions are encountered while developing and/or modifying the Audi Canada website. Audi Canada shall not be deemed liable or held responsible for any errors, omissions or any related issues to the information provided and contained on Audi.ca or external site linked to Audi.ca. The laws and courts of Ontario shall govern any issues related to Audi.ca, or external site linked to Audi.ca. All of the information contained in this site is for information purposes only and in no way constitutes an advertisement or an offer to buy or sell Audi vehicles. Manufacturer's Suggested Retail Price is for the Audi model selected (current model year available and in-market). Freight and PDI, license, insurance, registration, any dealer or other charges, options and taxes are not included. Actual prices are set by the dealer. This site shall not be used or relied upon by you as a substitute for information that is available to you from an authorized Audi dealer