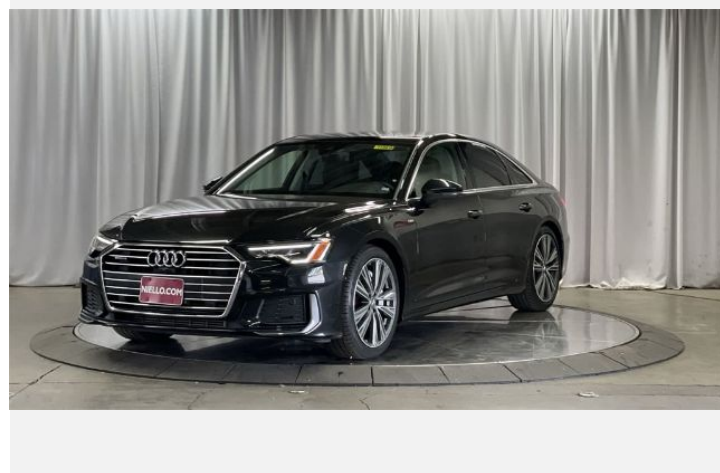
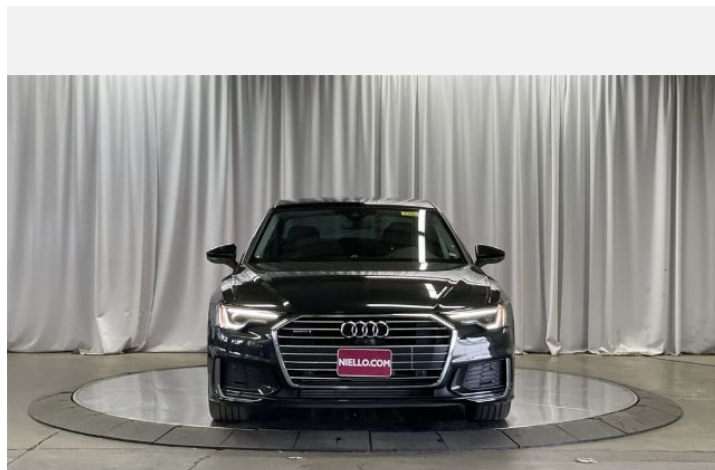
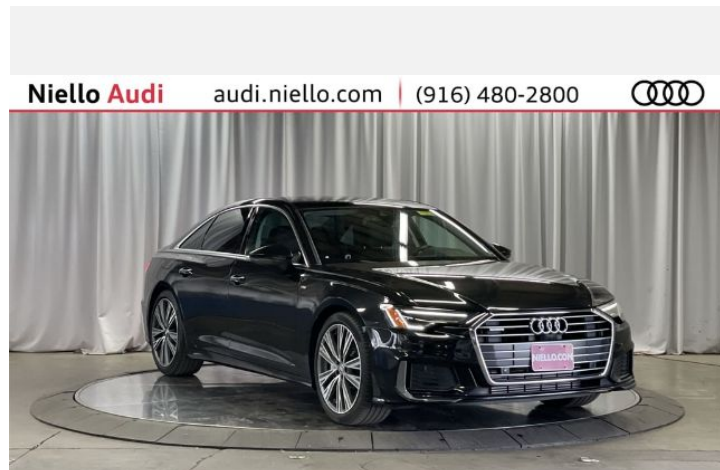




# 2019 Audi A6 Sedan

Premium Plus 55 quattro® S tronic®

Price as built : \$51,502



Audi Code

**AVBLS755**

[www.audiusa.com/AVBLS755](http://www.audiusa.com/AVBLS755)





# Summary

**Audi 2019 Audi A6 Sedan**  
Premium Plus 55 quattro® S tronic®

**Price as built**  
\$51,502

## Exterior colour

Vesuvius Gray metallic

## Interior colour

Seats	Black with Rock Gray cross stitching
Dashboard	Black
Carpet	Black
Headliner	Lunar Silver

## Technical Specifications

Engine type	3.0-liter six-cylinder
Displacement/Bore and stroke	2,995/84.5 x 89.0 cc/mm
Max. output	250 kw
Torque	369 lb-ft@rpm
Top track speed	130 mph mph
Acceleration (0 - 60 mph)	5.1 seconds seconds
Recommended fuel	Premium

**Niello Audi** audi.niello.com | (916) 480-2800



## Further Information

Type of vehicle	Used car
Mileage	22,479 miles

**Warranty** No

**Audi Code**  
AVBLS755

**Your configuration on [www.audiusa.com](http://www.audiusa.com)**  
[www.audiusa.com/AVBLS755](http://www.audiusa.com/AVBLS755)

**Commission number**  
29dd6db30a0e09b1036c



# Standard features



---

## Dealer remarks

---

CLEAN CARFAX, LED Headlights, 20" Sport Package, Audi Advanced Key, Audi Phone Box w/Wireless Charging, Audi Side Assist w/Pre Sense Rear, Audi Virtual Cockpit, Bang & Olufsen 3D Premium Sound System, Contrast Stitching on Door Armrests & Knee Bolster, Convenience Package, Exterior Parking Camera Rear, Headlight Washer System, Heated Auto-Dimming Power-Folding Exterior Mirrors, Heated front seats, Matrix-Design Headlights w/Highbeam Assist, Navigation System, Power moonroof, Premium Plus Package, Radio: Audi MMI Navigation Plus w/MMI Touch 10.1", Sport Suspension (20mm Drop), Top View Camera System w/Virtual 360 View, Wheels: 20" 5-V-Spoke Bi-Color.

Clean CARFAX.

22/29 City/Highway MPG

Niello Audi Is known for it's quality Pre-owned vehicles and for more quality vehicles go to [www.audi.niello.com](http://www.audi.niello.com) or dial (888) 451-4324 to find the vehicle of your dreams.



# Technical Specifications

(1/2)

## Engineering | Performance

Engine type	3.0-liter six-cylinder
Power Level	55
Max. output	250 kw
Max. output ps/hp	335 @ rpm
Max. output KW	250 kW
Torque	369 lb-ft@rpm
Valvetrain	24-valve DOHC with Audi valvelift system and variable valve timing
Acceleration (0 - 60 mph)	5.1 seconds seconds
Engine block	Aluminum-alloy
Induction/fuel injection	Twin-scroll turbocharged/TFI®
Cylinder head	Aluminum-alloy
Displacement/Bore and stroke	2,995/84.5 x 89.0 cc/mm
Top track speed	130 mph mph

## Electrical system

Hybrid system battery	48 Volt/9.6Ah lithium-ion battery
-----------------------	-----------------------------------

## Transmission | Drivetrain

Transmission	Seven-speed S tronic® dual-clutch automatic transmission with quattro® all-wheel-drive with ultra® technology
Layout	quattro®
Transmission	S tronic

## Steering

Steering type	Electromechanical progressive steering system
Turning diameter, curb-to-curb	36.4 ft
Steering ratio	12.1:1

## Suspension

Front axle	Five-link front independent steel spring suspension
Rear axle	Five-link rear independent steel spring suspension
Optional	Adaptive damping suspension

## Brakes

Front brakes	13.3 (ventilated disc) in
Rear brakes	13.0 (ventilated disc) in
Parking brake	Electromechanical

## Body

Material	Multi-material body construction (steel and aluminum composition)
Corrosion protection	Multistep anti-corrosion protection

## Warranty | Maintenance

Warranty	4-year/50,000-mile new vehicle limited warranty
Maintenance	12-month/10,000-mile (whichever occurs first) NO CHARGE first scheduled maintenance



# Technical Specifications

(2/2)

---

## Exterior Measurements

Height	57.4 in
Overall width without mirrors	74.3 in
Length	194.4 in
Wheelbase	115.1 in
Drag coefficient	0.29 Cw
Overall width with mirrors	83.1 in
Track rear	63.7 in
Track front	64.2 in
Curb weight	4,266 lb

---

## Interior measurements

Seating capacity	5
Shoulder room, rear	56.5 in
Head room with front sunroof	38.0 in
Leg room, rear	37.4 in
Shoulder room, front	57.8 in
Head room with rear sunroof	38.1 in
Leg room, front	41.3 in
Cargo volume, rear seatbacks up/folded	13.7/NA cu ft, cu ft



---

# Consumption- and emission

---

## Consumption by NEDC

urban	22.0 mpg
extra-urban	29.0 mpg
combined	25.0 mpg

---



---

# Contact

Dealer

**Niello Audi**

2350 Auburn Blvd  
95821 Sacramento  
CA

Phone: +19164802800

FAX: 9164831801

www: <https://www.audisacramento.com>





---

## Further information (Disclaimer)

Please note that although Audi Canada tries its best to avoid any pricing, fees, informational copy or image errors, there may be times where human error or omissions are encountered while developing and/or modifying the Audi Canada website. Audi Canada shall not be deemed liable or held responsible for any errors, omissions or any related issues to the information provided and contained on Audi.ca or external site linked to Audi.ca. The laws and courts of Ontario shall govern any issues related to Audi.ca, or external site linked to Audi.ca. All of the information contained in this site is for information purposes only and in no way constitutes an advertisement or an offer to buy or sell Audi vehicles. Manufacturer's Suggested Retail Price is for the Audi model selected (current model year available and in-market). Freight and PDI, license, insurance, registration, any dealer or other charges, options and taxes are not included. Actual prices are set by the dealer. This site shall not be used or relied upon by you as a substitute for information that is available to you from an authorized Audi dealer