



2014 Audi Q7

3.0 TFSI quattro 280 HP tiptronic

Price as built : \$15,612



Audi Code

AY1Y43E3

www.audiusa.com/AY1Y43E3





Summary

Audi 2014 Audi Q7
3.0 TFSI quattro 280 HP tiptronic

Price as built
\$15,612

Exterior colour
Night Black

Interior colour

Technical Specifications

Engine type	Six-cylinder
Displacement/Bore and stroke	2,995/84.5 x 89.0 cc/mm
Top track speed	130 mph mph
Acceleration (0 - 60 mph)	7.7 sec. seconds



Further Information

Type of vehicle	Used car
Mileage	85,491 miles

Warranty
No

Audi Code
AY1Y43E3

Your configuration on www.audiusa.com
www.audiusa.com/AY1Y43E3

Commission number
5f135db50a0e0a922a3e

Equipment

(1/2)

Night Black

Audi advanced key (keyless access)

Power-folding, power-adjustable, auto-dimming, heated side mirrors with memory



275/45 R20 all-season tires

20" 10-spoke V design wheels with 275/45 all-season tires

Chrome trim applied to bumpers, side sills, and door handles

Panoramic sunroof with deep tint

Four-zone automatic climate control



Electrically adjustable tilt / teles. Steering column



Manual rear sunshades in rear doors and in the tailgate



Equipment

(2/2)

DVD player

Parking system plus (includes front/rear sensors)



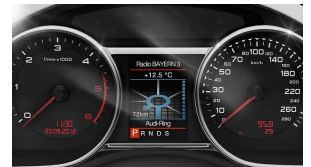
Rear view camera



BOSE® Surround Sound with 14 speakers and AudioPilot® noise-compensation



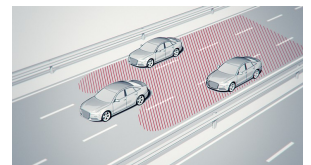
Color driver information system



HD Radio™ Technology

Voice control system

Audi side assist



Audi connect®



Standard features

Safety and Security

4UB	Driver and front passenger dual-stage airbags, thorax side airbags and Sideguard® head curtain airbags
8T1	Cruise control with coast, resume and accelerate features
4H5	Power child-safety window and rear door locks
QZ0	Tilt and telescopic manually adjustable steering column
7K6	Tire-pressure monitoring system
4X3	Head airbag system
8N6	Windshield wipers with four-position adjustable rain sensor rate
3B7	Lower Anchorage and Tethers for Children (LATCH) in rear seats

Exterior

0P0	Dual exhaust outlets
1D8	Provision for towing bracket
1S1	Tool kit in storage compartment in trunk
1BW	Comfort suspension
3S1	Aluminum roof rails
8EH	Bi-functional headlight with gas discharge lamp, for driving on the right (US design)
8Q3	Audi automatic headlamp leveling
4KF	Privacy glass
4ZB	Brushed aluminum trim on roof rails and around side windows

Interior

QE1	Storage package
7M0	Plastic scuff plates in door apertures
6NJ	Standard Headlining
4L7	Auto-dimming interior mirror w/ compass
QQ1	Additional interior and exterior lighting
2ZQ	Four-spoke multifunction steering wheel
6E6	Folding front center armrest with adjustable height, dual cupholders, and storage
7F9	Leather shift knob
4E9	Power trunk open/close and hands-free release
5XL	Dual front sun visors with lighted vanity mirrors
5KL	Sliding 40/20/40 split folding rear seatbacks with pass-through and adjustable recline
7HA	Without leather scope
N1F	leather seating surfaces
4A3	Heated front seats
5TS	Dark Brown Walnut Wood inlay

Infotainment and Driver Assistance

UF7	Audi music interface with iPod® integration
-----	---



Dealer remarks

2014 Audi Q7 3.0T Premium quattro 3-Panel Panorama Sunroof, 4-Zone Climate Control, 9.0J x 20" 10-Spoke-V-Design Wheels, Audi Advanced Key, Audi Connect w/Online Services, Audi Side Assist, Auto-Dimming Power-Folding Exterior Mirrors, Electrically Adjustable Steering Column, Front & Rear Acoustic Parking Sensors, HD Radio, Manual Window Shades For Rear Doors & Tailgate, Memory for Driver's Seat & Mirror Adjustments, Premium Plus Package, Radio: Audi MMI Navigation Plus, Rearview Parking Camera, Warm Weather Package. CARFAX One-Owner. Odometer is 7939 miles below market average!

Vehicle pricing includes all offers and incentives. Sales tax, registration fees, dealer installed options, reconditioning costs, and \$999 dealer fee not included in all vehicle prices shown and must be paid by the purchaser. While great effort is made to ensure the accuracy of the information on this site, errors do occur so please verify information with a customer service rep.



Technical Specifications

(1/2)

Engineering | Performance

Engine type	Six-cylinder
Acceleration (0 - 60 mph)	7.7 sec. seconds
Engine block	Aluminum alloy
Induction/fuel injection	Supercharged/TFSI®
Cylinder head	Aluminum alloy
Max. output ps/hp	280 @ 4,920-6,500 @ rpm
Towing capacity	5,500 / 6,600 with Towing Package lb
Displacement/Bore and stroke	2,995/84.5 x 89.0 cc/mm
Top track speed	130 mph mph
Valvetrain	24-Valve DOHC

Electrical system

Alternator	14 Volts - 190 amp
Battery	12 Volts - 80 amp

Transmission | Drivetrain

Gear ratios: 8th	0.686
Gear ratios: 6th	1.000
Gear ratios: Final Drive	3.700
Gear ratios: 7th	0.816
Gear ratios: 4th	1.437
Gear ratios: 5th	1.217
Gear ratios: 2nd	2.840
Gear ratios: 3rd	1.864
Gear ratios: Reverse	3.825
Gear ratios: 1st	4.845

Steering

Steering type	Audi servotronic® power steering system
Turning diameter, curb-to-curb	39.4 ft
Steering ratio	16.5:1

Suspension

Front axle	Double-wishbone front suspension
Rear axle	Four-link rear suspension

Brakes

Front brakes	13.8 (ventilated disc) in
Rear brakes	13.0 (ventilated disc) in



Technical Specifications

(2/2)

Body

Material	Fully galvanized steel unibody with aluminum hood, front fenders, tailgate and multistep anti-corrosion protection
----------	--

Warranty | Maintenance

Warranty	4-Year/50,000 mile Audi New Vehicle Limited Warranty
Maintenance	12-Month/5,000 mile (whichever occurs first) NO CHARGE first scheduled maintenance

Exterior Measurements

Height	68.4 in
Overall width without mirrors	78.1 in
Length	200.3 in
Wheelbase	118.2 in
Drag coefficient	.37 Cw
Overall width with mirrors	85.7 in
Track rear	66.0 in
Track front	65.0 in
Curb weight	5,192 lb

Interior measurements

Seating capacity	7
Leg room, rear	29.2 in
Shoulder room, front	58.7 in
Shoulder room, middle	58.1 in
Head room, front	39.5 in
Head room with middle sunroof	37.2 in
Shoulder room, rear	48.6 in
Head room with front sunroof	40.0 in
Head room with rear sunroof	35.4 in
Leg room, middle	37.1 in
Head room, rear	35.6 in
Leg room, front	41.3 in
Head room, middle	39.0 in
Cargo volume, rear seatbacks up/folded	10.9/42.0/72.5 (behind third row/behind second row/behind first row) cu ft, cu ft



Consumption- and emission

Consumption by NEDC

urban	16.0 mpg
extra-urban	22.0 mpg
combined	18.0 mpg



Contact

Dealer

Audi Coral Springs

5555 N State Road 7
33073 Coral Springs
FL

Phone: 9545098960
FAX: 9545098966

www: <https://www.coralsspringsaudifl.com>



Further information (Disclaimer)

Please note that although Audi Canada tries its best to avoid any pricing, fees, informational copy or image errors, there may be times where human error or omissions are encountered while developing and/or modifying the Audi Canada website. Audi Canada shall not be deemed liable or held responsible for any errors, omissions or any related issues to the information provided and contained on Audi.ca or external site linked to Audi.ca. The laws and courts of Ontario shall govern any issues related to Audi.ca, or external site linked to Audi.ca. All of the information contained in this site is for information purposes only and in no way constitutes an advertisement or an offer to buy or sell Audi vehicles. Manufacturer's Suggested Retail Price is for the Audi model selected (current model year available and in-market). Freight and PDI, license, insurance, registration, any dealer or other charges, options and taxes are not included. Actual prices are set by the dealer. This site shall not be used or relied upon by you as a substitute for information that is available to you from an authorized Audi dealer