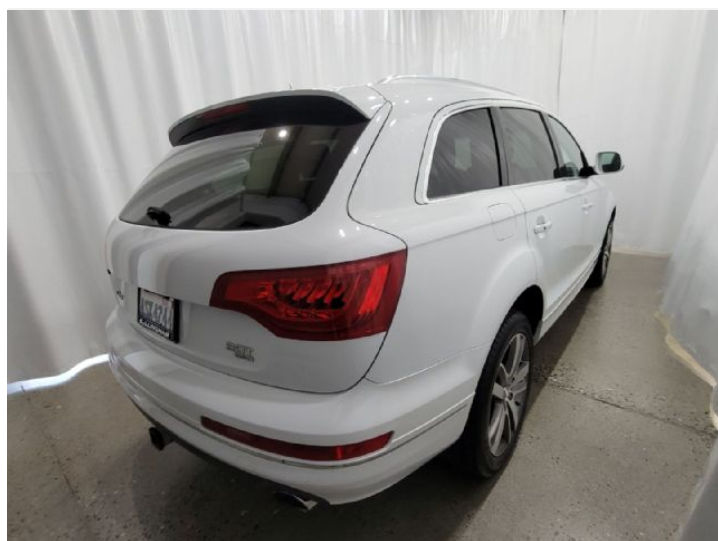




2015 Audi Q7

Premium Plus 3.0 TFSI quattro 280 HP tiptronic

Price as built : \$19,995



Audi Code

AY2N81X1

www.audiusa.com/AY2N81X1





Summary

Audi 2015 Audi Q7
Premium Plus 3.0 TFSI quattro 280 HP tiptronic

Price as built
\$19,995

Exterior colour
Glacier White metallic

Interior colour



Technical Specifications

Engine type	Six-cylinder
Displacement/Bore and stroke	2,995/84.5 x 89.0 cc/mm
Torque	295 @ 2,150-4,915 lb-ft@rpm
Top track speed	130 mph mph
Acceleration (0 - 60 mph)	7.7 sec. seconds
Recommended fuel	Premium

Further Information

Type of vehicle	Used car
Mileage	108,439 miles

Warranty No

Audi Code
AY2N81X1

Your configuration on www.audiusa.com
www.audiusa.com/AY2N81X1

Commission number
4ea868f60a0e081d5520

Equipment

(1/2)

Glacier White metallic

Audi advanced key - keyless start, stop and entry

Towing package

Power-folding, power-adjustable, auto-dimming, heated side mirrors with memory



275/45 R20 all-season tires

20" 10-spoke V design wheels with 275/45 all-season tires

Warm Weather package

Panoramic sunroof with deep tint

Four-zone automatic climate control



Steering wheel with electric tilt and axial adjustment



Equipment

(2/2)

Manual rear side-window sunshades (second row and rear window)



DVD Player

Audi parking system with rear view camera



Rear view camera



BOSE Surround Sound System



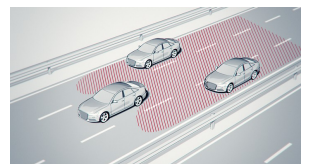
Color driver information system



HD Radio™ Technology

Voice control

Audi side assist



BLUETOOTH® wireless technology preparation for mobile phone





Standard features

Safety and Security

4UB	Driver and front-passenger advanced airbags
8T1	Cruise control with coast, resume and accelerate features
4H5	Power child-safety window and rear door locks
QZ0	Tilt and telescopic manually adjustable steering column
7K6	Tire-pressure monitoring system
4X3	Side airbags at front and head airbag system
8N6	Light / rain sensor
3B7	ISOFIX child seat mounting and Top Tether anchorage point for outer rear seats

Exterior

0P0	Dual exhaust outlets
1S1	Tool kit in storage compartment in trunk
1BW	Comfort suspension
3S1	Aluminum roof rails
8EH	Xenon plus headlights
8Q3	Automatic headlight leveling
4KF	Privacy glass
4ZB	Brushed aluminum trim on roof rails and around side windows

Interior

QE1	Storage nets in backs of front seats
QJ1	Chrome trim applied to bumpers, side sills, and door handles
7M0	Plastic door sill trims

Interior

6NJ	Light cloth headliner
4L7	Auto-dimming interior mirror with compass
QQ1	Illumination for interior door handles, air vent controls, front footwells
2ZQ	Four-spoke multifunction steering wheel
6E6	Folding front center armrest with adjustable height, dual cupholders, and storage
7F9	Leather gearshift knob
4E9	Power trunk open/close and hands-free release
5XL	Dual front sun visors with lighted vanity mirrors
5KL	Sliding 40/20/40 split folding rear seatbacks with pass-through and adjustable recline
7HA	Cloth interior on doors
N1F	Leather seating surfaces
4A3	Heated front seats
5TS	Dark Brown Walnut Wood inlay

Infotainment and Driver Assistance

UF7	Audi music interface
-----	----------------------



Technical Specifications

(1/3)

Engineering | Performance

Engine type	Six-cylinder
Engine block	Aluminum-alloy
Induction/fuel injection	Supercharged/TFSI®
Cylinder head	Aluminum-alloy
Horsepower	280 @ 4,920-6,500 @ rpm
Towing capacity	5,500 / 6,600 with Towing Package lb
Displacement/Bore and stroke	2,995/84.5 x 89.0 cc/mm
Valvetrain	24-Valve DOHC

power

Displacement/Bore and stroke	2,995/84.5 x 89.0 cc/mm
Torque	295 @ 2,150-4,915 lb-ft@rpm

Transmission | Drivetrain

Gear ratios: 8th	0.672
Gear ratios: 6th	1.000
Gear ratios: 7th	0.816
Gear ratios: Reverse	3.825
Gear ratios: Final Drive	3.700
Gear ratios: 4th	1.437
Transmission	Eight-speed tiptronic® automatic transmission with quattro® all-wheel drive
Gear ratios: 5th	1.217
Gear ratios: 2nd	2.840
Gear ratios: 3rd	1.864
Gear ratios: 1st	4.845

chassis

Front axle	Double-wishbone front suspension
Rear axle	Four-link rear suspension

Brakes

Front brakes	13.8 (ventilated disc) in
Rear brakes	13.0 (ventilated disc) in



Technical Specifications

(2/3)

Steering

Steering type	Servotronic® power steering system
Turning diameter, curb-to-curb	39.4 ft
Steering ratio	16.5:1

Volumes

Cargo volume, rear seatbacks up/folded	10.9/42.0/72.5 (behind third row/behind second row/behind first row) cu ft, cu ft
Fuel	26.4 gal

Performance data

Acceleration (0 - 60 mph)	7.7 sec. seconds
Top track speed	130 mph mph

Electrical system

Alternator	14 Volts - 190 amp
Battery	12 Volts - 80 amp

Body

Material	Fully galvanized steel unibody with aluminum hood, front fenders, tailgate and multistep anti-corrosion protection
----------	--

Warranty | Maintenance

Warranty	4-Year/50,000 mile new vehicle limited warranty
Maintenance	12-Month/5,000 mile (whichever occurs first) NO CHARGE first scheduled maintenance

Exterior Measurements

Height	68.4 in
Overall width without mirrors	78.1 in
Length	200.3 in
Wheelbase	118.2 in
Drag coefficient	.37 Cw
Overall width with mirrors	85.7 in
Track rear	66.0 in
Track front	65.0 in
Curb weight	5,192 lb
Ground clearance, loaded	8.1 in



Technical Specifications

(3/3)

Interior measurements

Seating capacity	7
Leg room, rear	29.2 in
Shoulder room, front	58.7 in
Shoulder room, middle	58.1 in
Head room, front	39.5 in
Head room with middle sunroof	37.2 in
Shoulder room, rear	48.6 in
Head room with front sunroof	40.0 in
Head room with rear sunroof	35.4 in
Leg room, middle	37.1 in
Head room, rear	35.6 in
Leg room, front	41.3 in
Head room, middle	39.0 in



Contact

Dealer
Audi Bellingham

2200 Iowa St
98229 Bellingham
WA

Phone: 3607345230
FAX: 3607344835

www: <https://www.audibellingham.com>



Further information (Disclaimer)

Please note that although Audi Canada tries its best to avoid any pricing, fees, informational copy or image errors, there may be times where human error or omissions are encountered while developing and/or modifying the Audi Canada website. Audi Canada shall not be deemed liable or held responsible for any errors, omissions or any related issues to the information provided and contained on Audi.ca or external site linked to Audi.ca. The laws and courts of Ontario shall govern any issues related to Audi.ca, or external site linked to Audi.ca. All of the information contained in this site is for information purposes only and in no way constitutes an advertisement or an offer to buy or sell Audi vehicles. Manufacturer's Suggested Retail Price is for the Audi model selected (current model year available and in-market). Freight and PDI, license, insurance, registration, any dealer or other charges, options and taxes are not included. Actual prices are set by the dealer. This site shall not be used or relied upon by you as a substitute for information that is available to you from an authorized Audi dealer