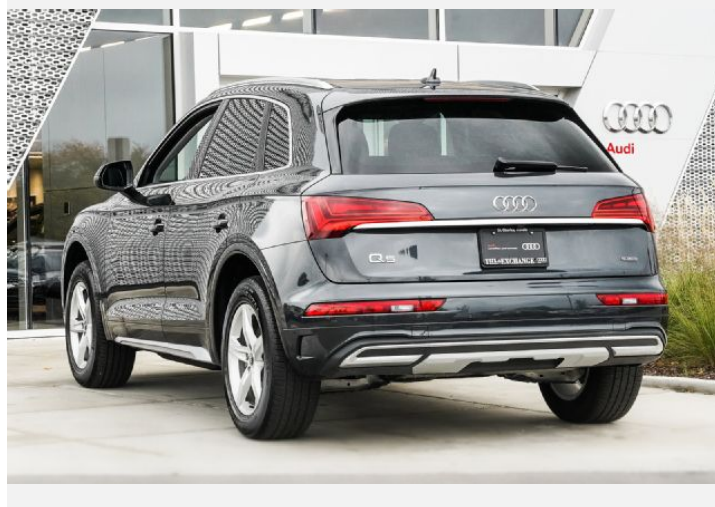




2021 Audi Q5

Premium 45 TFSI® quattro® S tronic®

Price as built : \$41,500



Audi Code

AY63HN2K

www.audiusa.com/AY63HN2K



Summary

Audi 2021 Audi Q5
Premium 45 TFSI® quattro® S tronic®

Price as built
\$41,500

Exterior colour

Manhattan Gray metallic

Interior colour

| | |
|-----------|--------------------------------|
| Seats | Black with Rock Gray stitching |
| Dashboard | Black |
| Carpet | Black |
| Headliner | Gray |

Technical Specifications

| | |
|------------------------------|-------------------------|
| Engine type | 2.0-liter four-cylinder |
| Displacement/Bore and stroke | 1,984/82.5 x 92.8 cc/mm |
| Max. output | 261 HP |
| Torque | 273 lb-ft@rpm |
| Top track speed | 130 mph ¹ |
| Acceleration (0 - 60 mph) | 5.7 seconds |
| Recommended fuel | Premium |



Further Information

| | |
|-----------------|--------------|
| Type of vehicle | Used car |
| Mileage | 12,148 miles |

Warranty
No

Audi Code
AY63HN2K

Your configuration on www.audiusa.com
www.audiusa.com/AY63HN2K

Commission number
c51efe5d0a0e0a9a7167

Equipment

Manhattan Gray metallic

Audi advanced key-keyless start, stop and entry

Power-adjustable, auto-dimming, power-folding, heated exterior side mirrors with memory

Convenience package

Power panoramic sunroof

Birch Wood Natural Gray Brown inlays

SiriusXM® with 90-day All Access trial subscription





Standard features

(1/2)

Safety and Security

| | |
|-----|--|
| 4UB | Driver and front passenger airbags |
| UH1 | Electromechanical parking brake |
| 8T2 | Cruise control system |
| VC2 | Garage door opener (Homelink®) |
| 4H5 | Electronic rear child door locks |
| QZ7 | Speed-sensitive electromechanical power steering system |
| 7K6 | Tire-pressure monitoring system |
| 4X3 | Advanced Airbag Protection System |
| 3B7 | Lower Anchors and Tethers for Children (LATCH) in rear seats |

Exterior

| | |
|-----|--|
| 1D8 | Trailer hitch provision |
| 1S1 | Tool kit and floor jack |
| 1BA | Standard suspension |
| 3S1 | Aluminum roof rails |
| 5J1 | Tailgate roof spoiler |
| 8IT | Full LED headlights with DRL signature |
| HX2 | 235/60 R18 all-season tires |
| 8VM | LED taillights with dynamic turn signal |
| VJ1 | Full paint finish |
| 4KC | Heat-insulating side and rear windows |
| 4ZB | Aluminum trim around exterior windows |
| 41V | 18" 5-arm-star design wheels with all-season tires |

Interior

| | |
|-----|---|
| QE1 | Storage package |
| 4M3 | Four beverage holders |
| 7M1 | Aluminum front door sill inlays |
| 6NJ | Light cloth headliner |
| 9AQ | Three-zone automatic climate control system |
| 4L7 | Auto-dimming interior rear view mirror with digital compass and Integrated Toll Module® |
| QQ1 | LED interior lighting package |
| 6E3 | Front center armrest |
| 7F9 | Leather-wrapped gear selector |
| 4E7 | Power tailgate |
| 5XF | Driver and front-passenger extendable sun visors with illuminated vanity mirrors |
| 3NS | Sliding, split folding 40/20/40 rear seatbacks with adjustable recline |
| N1P | Leather seat covers |
| 4A3 | Heated front seats |

Infotainment and Driver Assistance

| | |
|-----|---|
| 6K9 | Audi pre sense® city |
| 2H1 | Audi drive select |
| IU1 | Audi smartphone interface |
| IW3 | Audi connect® CARE assistance and security services (limited time subscription) |
| 7X2 | Parking system plus |
| 7W3 | Audi pre sense® basic and rear |
| KA2 | Rear view camera |
| 8G1 | High beam assist |



Standard features

(2/2)

Infotainment and Driver Assistance

| | |
|-----|---|
| 9VD | Audi sound system |
| 9S7 | 7.0" color driver information system |
| 7Y1 | Audi side assist |
| 6I3 | Audi active lane assist |
| 9ZX | Preparation for mobile phone (Bluetooth®) with streaming audio |



Dealer remarks

Window Grid Diversity Antenna, Wheels: 18" 5-Arm-Star Design, Wheels w/Silver Accents, Valet Function, Trunk/Hatch Auto-Latch, Trip Computer, Transmission: 7-Speed S tronic Dual-Clutch Auto, Transmission w/Driver Selectable Mode and Oil Cooler, Trailer Wiring Harness, Tracker System. This Audi Q5 has a strong Intercooled Turbo Gas/Electric I-4 2.0 L/121 engine powering this Automatic transmission.

These Packages Will Make Your Audi Q5 Premium The Envy of Your Friends

Tires: 18" AS, Tire Pressure Monitoring System Low Tire Pressure Warning, Tailgate/Rear Door Lock Included w/Power Door Locks, Systems Monitor, Steel Spare Wheel, Speed Sensitive Rain Detecting Variable Intermittent Wipers w/Heated Jets, SIDEGUARD Curtain 1st And 2nd Row Airbags, Side Impact Beams, Roof Rack, Remote Releases -Inc: Power Cargo Access, Remote Keyless Entry w/Integrated Key Transmitter, 4 Door Curb/Courtesy, Illuminated Entry, Illuminated Ignition Switch and Panic Button, Redundant Digital Speedometer, Rear HVAC w/Separate Controls, Rear Cupholder, Radio: Audi Sound System -inc: Audi smartphone interface w/wireless Apple CarPlay, preparation for mobile phone (Bluetooth), MMI touch display w/10.1" center screen and 2 rear USB charge ports, Radio w/Seek-Scan, Clock, Speed Compensated Volume Control, Steering Wheel Controls, Voice Activation and Radio Data System, Quasi-Dual Stainless Steel Exhaust, Proximity Key For Push Button Start Only, Programmable Projector Beam Led Low/High Beam Auto-Leveling Auto High-Beam Daytime Running Lights Preference Setting Headlamps w/Delay-Off, Power Rear Windows and Fixed 3rd Row Windows.

Visit Us Today

For a must-own Audi Q5 come see us at Audi Exchange St. Charles, 235 North Randall Road, St. Charles, IL 60174. Just minutes away!



Technical Specifications

(1/2)

Engineering | Performance

| | |
|------------------------------|--|
| Engine type | 2.0-liter four-cylinder |
| Power Level | 45 |
| Max. output | 261 HP |
| Displacement | 2.0 l |
| Towing capacity | 4,400 lb |
| Valvetrain | 16-valve DOHC with Audi valvelift system and variable valve timing |
| Torque | 273 lb-ft@rpm |
| Acceleration (0 - 60 mph) | 5.7 seconds |
| Engine block | Cast-iron |
| Induction/fuel injection | Turbocharged/TFSI® |
| Cylinder head | Aluminum-alloy |
| Displacement/Bore and stroke | 1,984/82.5 x 92.8 cc/mm |
| Top track speed ¹ | 130 mph |

Exterior Measurements

| | |
|-------------------------------|----------|
| Height | 65.5 in |
| Overall width without mirrors | 74.5 in |
| Length | 184.3 in |
| Wheelbase | 111.0 in |
| Overall width with mirrors | 84.2 in |
| Track rear | 63.3 in |
| Track front | 63.6 in |
| Curb weight | 4,079 lb |

Interior measurements

| | |
|--|---|
| Seating capacity | 5 |
| Shoulder room, rear | 56.5 in |
| Shoulder room, front | 57.7 in |
| Leg room, rear | 38.0 in |
| Head room with front sunroof | 38.1 in |
| Head room with rear sunroof | 37.7 in |
| Head room, rear | 39.3 in |
| Leg room, front | 40.9 in |
| Head room, front | 39.6 in |
| Cargo volume, rear seatbacks up/folded | 25.8/54.0 (25.6/53.5 with sunroof) cu ft, cu ft |

Steering

| | |
|--------------------------------|---|
| Steering type | Electromechanical progressive steering system |
| Turning diameter, curb-to-curb | 38.7 ft |
| Steering ratio | 15.9:1 |

Volumes

| | |
|-------------------|----------|
| Fuel ² | 18.5 gal |
|-------------------|----------|

Brakes

| | |
|--------------|---------------------------|
| Front brakes | 13.3 (ventilated disc) in |
| Rear brakes | 13.0 (ventilated disc) in |



Technical Specifications

(2/2)

Warranty | Maintenance

| | |
|----------|--|
| Warranty | 4-year/50,000-mile Audi New Vehicle Limited Warranty |
|----------|--|

Suspension

| | |
|------------|--|
| Front axle | Five-link suspension - Audi comfort suspension |
| Rear axle | Five-link suspension - Audi comfort suspension |

Electrical system

| | |
|---------------|--|
| Hybrid engine | 12-volt Mild Hybrid Electric Vehicle (MHEV) technology |
|---------------|--|

Transmission | Drivetrain

| | |
|-----------------|--|
| Drivetrain type | quattro® all-wheel drive with ultra® technology |
| Transmission | Seven-speed S tronic® dual-clutch automatic transmission |

Body

| | |
|----------|---|
| Material | Lightweight technology—multi-material construction (steel and aluminum) |
|----------|---|



Contact

Dealer

Audi Exchange St. Charles

235 N Randall Rd
60174 Saint Charles
IL

Phone: 6304252834

FAX: 6304255329

www: <https://www.audiexchangecharles.com>



Further information (Disclaimer)

¹ Top track speed electronically limited in the U.S. Always obey speed and traffic laws.

² Gasoline cars: Never drive until the tank is completely empty. The irregular supply of fuel that results from that can cause engine misfires. Uncombusted fuel will then enter the exhaust system. This can cause overheating and damage to the catalytic converter. Electric cars: Never drive the battery down to a completely empty state of charge.

Please note that although Audi Canada tries its best to avoid any pricing, fees, informational copy or image errors, there may be times where human error or omissions are encountered while developing and/or modifying the Audi Canada website. Audi Canada shall not be deemed liable or held responsible for any errors, omissions or any related issues to the information provided and contained on Audi.ca or external site linked to Audi.ca. The laws and courts of Ontario shall govern any issues related to Audi.ca, or external site linked to Audi.ca. All of the information contained in this site is for information purposes only and in no way constitutes an advertisement or an offer to buy or sell Audi vehicles. Manufacturer's Suggested Retail Price is for the Audi model selected (current model year available and in-market). Freight and PDI, license, insurance, registration, any dealer or other charges, options and taxes are not included. Actual prices are set by the dealer. This site shall not be used or relied upon by you as a substitute for information that is available to you from an authorized Audi dealer